

Installation Instructions for Cushion Insert

REMOVE SEAT CUSHION

Step 1

If Buckle Pad is installed, grasp top of Buckle Pad and pull up to remove from Buckle. Unfasten the locking tabs at the lower front edge of the Seat Cushion.

Step 2

Grasp Seat Cushion at the bottom front edge, then lift and pull forward, as shown in **Figure 1**. Once the Seat Cushion releases, pull the Buckle through the Seat Cushion.

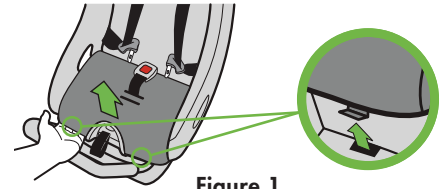


Figure 1

REMOVE SEAT CUSHION COVER

Step 1

Turn Seat Cushion over to locate the Seat Cushion Cover attachments, as shown in **Figure 2**.

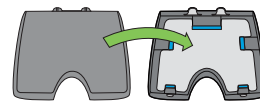


Figure 2

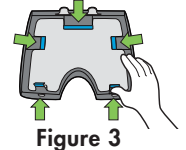


Figure 3

Step 2

Using your thumb, push inward on each Seat Cushion Cover attachment one at a time to release the Cover from the Seat Cushion, as shown in **Figure 3**.

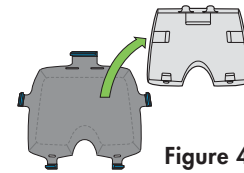


Figure 4

Step 3

Remove Seat Cushion Cover from Seat Cushion, as shown in **Figure 4**.

INSTALL CUSHION INSERT

Push the cushion insert into the crotch buckle opening on the top side of the foam cushion, as shown in **Figure 5**.

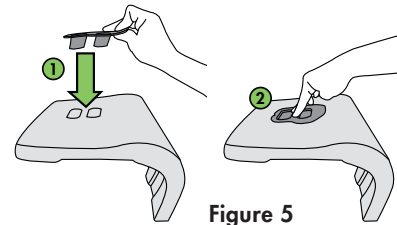


Figure 5

RE-INSTALL SEAT CUSHION COVER

Step 1

Place Seat Cushion Cover on a flat surface with Seat Cushion Cover attachments facing up, as shown in **Figure 6**.

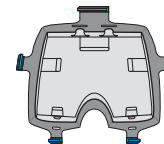


Figure 6

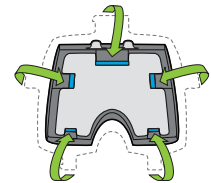


Figure 7

Step 2

Place Seat Cushion onto Seat Cushion Cover, aligning the Seat Cushion with the Seat Cushion Cover attachments.

Step 3

Reattach Seat Cushion Cover attachments to Seat Cushion by wrapping the Seat Cushion Cover sides around the entire Seat Cushion, as shown in **Figure 7**.

RE-INSTALL SEAT CUSHION

Step 1

Insert the Buckle through the slot in the Seat Cushion that matches the slot the Crotch Strap is through in the seat.

Step 2

Insert the tabs on the back of the Seat Cushion through the slots in the pad and into the seat back at the back of the seat bottom. Push the locking tabs at the lower front of the Seat Cushion into the holes at the front edge of the seat, as shown in **Figure 8**.

Step 3

Grasp Buckle and push through opening in Buckle Pad to install Buckle Pad.

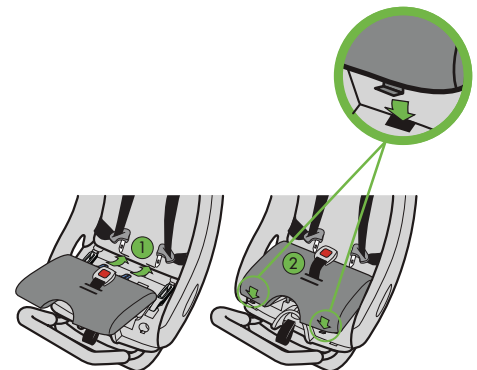


Figure 8