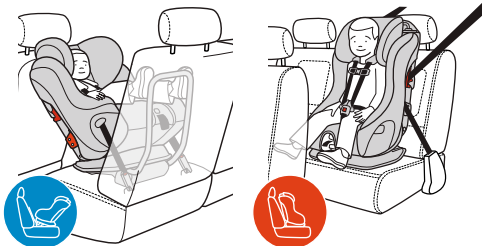




## Flo Instruction Manual

This car seat is designed for use either Rear-Facing or Forward-Facing by children who meet all of the following requirements:



HEIGHT	WEIGHT	AGE
64 – 110 cm 25 – 43 in.	6.4 – 18.1 kg 14 – 40 lb	Able to sit upright alone



HEIGHT	WEIGHT	AGE
76 – 124 cm 30 – 49 in.	10 – 29.5 kg 22 – 65 lb	2+ years recommended (min. 1 year)



### WARNING

- Read and understand product labels and all instructions in this manual and in your vehicle owner's manual before installing or using this car seat.
- Failure to properly install or use this car seat or follow these warnings and those on this car seat's labels can result in serious injury or death to the child in a sharp turn, sudden stop or crash.

## Checklist for Proper Use

**IMPORTANT:** This is only a checklist — you must read and understand all of the warnings and instructions on this car seat's labels and in this manual before installing or using this car seat.



### When Using This Car Seat in Rear-Facing Mode

- ✓ Child weighs between 6.4 and 18.1 kg (14 and 40 lb), height is between 64 and 110 cm (25 and 43 in.) and able to sit upright alone.
- ✓ Car seat is securely installed in a vehicle rear seat using the Anti-Rebound Bar.
  - If car seat must be installed in a front seat, the front air bag for that position is deactivated and the vehicle owner's manual states that this is an acceptable position to install a Rear-Facing child restraint.
- ✓ UAS lower anchor belt or vehicle belt is correctly routed under Seat Cushion in the Rear-Facing belt path and there is no slack in the UAS lower anchor belt or the vehicle belt.
- ✓ Recline Foot is in the Rear-Facing position and Car Seat is reclined so that the Rear-Facing reference line appropriate for the child's weight is parallel to the ground.
- ✓ The top of the child's head is at least 2.5 cm (1") below the top of the car seat Headrest.
- ✓ Shoulder Harness Straps **MUST** be through Shoulder Harness Slots at or below and closest to the child's shoulders.
- ✓ Bottom of Headrest is at or above the Shoulder Harness Slots in use.
- ✓ Crotch Strap is through Crotch Strap Slot at or behind and closest to the child's crotch.
- ✓ Harness is buckled and snugly adjusted on child.



### When Using This Car Seat in Forward-Facing Mode

- ✓ Child weighs between 10 and 29.5 kg (22 and 65 lb), height is between 76 to 124 cm (30 and 49 in.) and is at least 1 year of age.
- ✓ Car seat is securely installed in a vehicle rear seat without the Anti-Rebound Bar.
  - If car seat must be installed in a front seat, the front air bag for that position is deactivated, check the vehicle owner's manual for proper use of a child restraint in that position.
- ✓ Car seat is correctly attached to the vehicle using either the UAS Belt and Top Tether, or the vehicle belt and Top Tether.
  - If child weighs more than 18.1 kg (40 lb) or the weight limit specified for UAS use in your vehicle owner's manual, this car seat must be installed with the vehicle belt and Top Tether.
- ✓ Recline Foot is in the Forward-Facing position.
- ✓ The top of the child's ears are at or below the top of the car seat Headrest.
- ✓ Shoulder Harness Straps **MUST** be through Shoulder Harness Slots at or above and closest to the child's shoulders.
- ✓ Bottom of Headrest is at or above the Shoulder Harness Slots in use.
- ✓ Crotch Strap is through Crotch Strap Slot at or behind and closest to the child's crotch.
- ✓ Harness is buckled and snugly adjusted on child.

For concerns related to parts or the use and maintenance of this product, please contact us at:

Clek Inc.  
Attn: Customer Service  
226 Lesmill Rd.  
Toronto, Ontario  
Canada M3B 2T5

1-866-656-2462

[www.clekinc.ca](http://www.clekinc.ca)

# Table of Contents

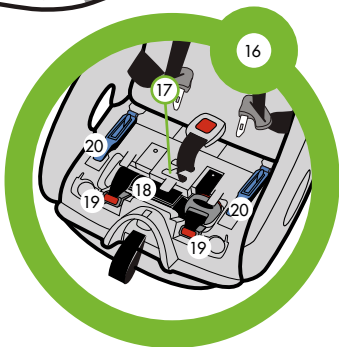
<b>Checklist for Proper Use</b> .....	<b>i</b>
When Using This Car Seat in Rear-Facing Mode .....	<b>i</b>
When Using This Car Seat in Forward-Facing Mode .....	<b>ii</b>
<b>Car Seat Features</b> .....	<b>3</b>
<b>Registration &amp; Recall Information</b> .....	<b>5</b>
Registering Your Car Seat .....	<b>6</b>
<b>Warnings</b> .....	<b>7</b>
<b>Certification</b> .....	<b>11</b>
<b>Vehicle Classification</b> .....	<b>11</b>
<b>Size &amp; Age Limitations</b> .....	<b>11</b>
AAP Recommendations .....	<b>12</b>
When Using This Car Seat in Rear-Facing Mode .....	<b>12</b>
When Using This Car Seat in Forward-Facing Mode .....	<b>14</b>
<b>Adjusting Car Seat to Fit Your Child</b> .....	<b>15</b>
Installing Headrest .....	<b>15</b>
Adjusting Headrest .....	<b>16</b>
Crotch Strap Adjustment .....	<b>17</b>
Shoulder Harness Adjustment .....	<b>19</b>
Shoulder Harness Slot Selection .....	<b>20</b>
Shoulder Harness Unthreading .....	<b>20</b>
Shoulder Harness Rethreading .....	<b>22</b>
<b>Vehicle Information</b> .....	<b>25</b>
Vehicle Universal Anchorage System (UAS) .....	<b>25</b>
Vehicle Seat Location Requirements .....	<b>26</b>
Vehicle Belt Requirements .....	<b>28</b>
Vehicle Belt Systems .....	<b>29</b>
<b>Installing/Removing Rear-Facing Car Seat</b> .....	<b>32</b>

Installing Rear-Facing Car Seat With UAS .....	<b>34</b>
Removing Rear-Facing Car Seat Installed With UAS .....	<b>40</b>
Installing Rear-Facing Car Seat With Vehicle Belt .....	<b>41</b>
Removing Rear-Facing Car Seat Installed With Vehicle Belt .....	<b>48</b>
<b>Installing/Removing Forward-Facing Car Seat</b> .....	<b>49</b>
Installing Forward-Facing Car Seat With UAS .....	<b>51</b>
Removing Forward-Facing Car Seat Installed With UAS .....	<b>57</b>
Installing Forward-Facing Car Seat With Vehicle Belt .....	<b>59</b>
Removing Forward-Facing Car Seat Installed With Vehicle Belt .....	<b>64</b>
<b>Securing Your Child in Car Seat</b> .....	<b>66</b>
Removing Your Child From Car Seat .....	<b>71</b>
<b>Operation and Adjustments</b> .....	<b>72</b>
Removing/Installing Seat Cushion .....	<b>72</b>
Installing/Removing Anti-Rebound Bar .....	<b>73</b>
UAS Belt Storage .....	<b>76</b>
Top Tether Storage .....	<b>78</b>
Instruction Manual Storage .....	<b>78</b>
<b>Aircraft Installation</b> .....	<b>79</b>
<b>Care and Cleaning</b> .....	<b>80</b>
Removing/Installing Shoulder Harness Covers .....	<b>80</b>
Removing/Installing Seat Cushion Cover .....	<b>81</b>
Car Seat Cleaning .....	<b>83</b>
Recycling Your Car Seat .....	<b>85</b>
<b>Troubleshooting</b> .....	<b>85</b>
<b>Accessories</b> .....	<b>85</b>
<b>Warranty</b> .....	<b>86</b>

© Clek and Clek logos, Olli, Ozzi, Oobr, Foonf and Fillo are registered trademarks of Clek Inc.  
For a complete list of Clek Inc. trademarks please visit [www.clekinc.ca/trademarks](http://www.clekinc.ca/trademarks).

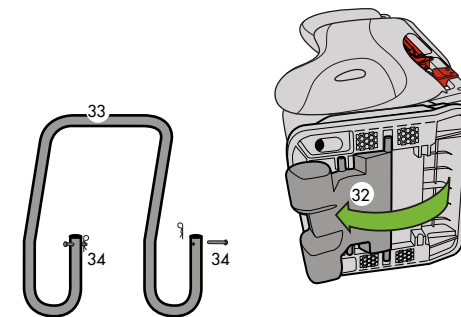
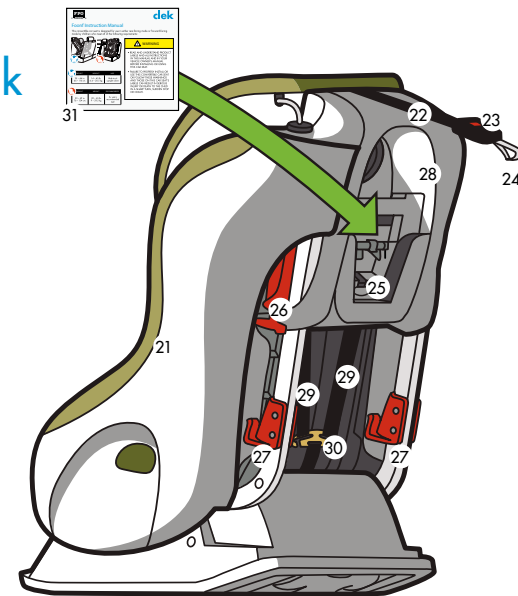
## Car Seat Features – Front

- 1 Seat Cushion
- 2 Shoulder Harness Slots
- 3 Shoulder Harness Covers
- 4 Shoulder Harness Straps
- 5 Chest Clip
- 6 Buckle Tongues
- 7 Buckle
- 8 Crotch Strap
- 9 Buckle Pad
- 10 Harness Adjuster
- 11 Harness Adjuster Strap
- 12 Seat Base
- 13 Rear Facing Belt Path
- 14 Headrest
- 15 Headrest Adjuster
- 16 UAS Belt Storage (under Seat Cushion)
- 17 Crotch Strap Slots
- 18 UAS Belt
- 19 UAS Push on Connector
- 20 Rear-Facing Belt Lock-offs



## Car Seat Features – Back

- 21 Seat
- 22 Top Tether
- 23 Tether Adjuster
- 24 Tether Hook
- 25 Tether Storage (behind manual)
- 26 Forward-Facing Shoulder Belt Lock-offs
- 27 Forward Facing Belt Guides
- 28 Shoulder Harness Access Panel
- 29 Shoulder Harness Straps
- 30 Metal Harness Plate
- 31 Instruction Manual (stored in Shoulder Harness Access Panel)
- 32 Change to Recline Foot (shown in Rear-Facing Position)
- 33 Anti-Rebound Bar
- 34 Anti-Rebound Bar Locking Pins and Locking Pin Clips



## Registration & Recall Information



### WARNING

- Child restraints could be recalled for safety reasons. You must register this restraint (car seat) to be reached in a recall.

Model Name: FLLO

Serial Number: \_\_\_\_\_

Manufactured In: \_\_\_\_\_  
(yyyy/mm/dd)

Date of Purchase: \_\_\_\_\_

## Registering Your Car Seat

Please fill in the information on the previous page for your records. The model name, serial number and manufacturing date can be found on a label affixed to the back of this Car Seat.

**Fill out the prepaid registration postcard attached to the car seat and mail it today.**

Child restraints could be recalled for safety reasons. You must register this restraint to be reached in a recall. Send your name, address, e-mail address if available, and the restraint's model number and manufacturing date to:

Clek Inc.  
226 Lesmill Rd.  
Toronto, Ontario, Canada M3B 2T5

or call 1-866-656-2462

or register online at <http://www.clekinc.ca/register>

For recall information, call Transport Canada's Road Safety Information Centre at 1-800-333-0371, or go to <http://www.tc.gc.ca/eng/motorvehiclesafety/safedrivers-childsafety-notices-menu-907.htm>

## Warnings

### **WARNING – DEATH or SERIOUS INJURY can occur**

Failure to properly install or use this car seat or follow these warnings and instructions and those on this car seat's labels can result in serious injury or death of the child in a sharp turn, sudden stop or crash.

- Do not install or use this car seat until you read and understand the instructions in this manual and in your vehicle owner's manual. Do not let others install or use this car seat unless they understand how to correctly install and use it.
- Never use this car seat Rear-Facing in a vehicle front seating location with an air bag.
- Use only in a Rear-Facing position when using this car seat with an infant less than one year old and weighing less than 10 kg (22 lb).
- Failure to choose the correct car seat mode (Rear-Facing or Forward-Facing) and to properly secure this car seat and your child can increase the risk of injury or death.
- Never use this car seat with children not able to sit upright alone. Their head may fall forward, which could restrict their ability to breathe.

### **WARNING – DEATH or SERIOUS INJURY can occur (continued)**

- Discontinue Rear-Facing use when:
  - Child's weight exceeds 18.1 kg (40 lb).
  - Child's height exceeds 110 cm (43 in.).
  - Child's head is less than 2.5 cm (1") from the top of the car seat's Headrest in its highest adjustment position.
- Discontinue Forward-Facing use when:
  - Child's weight exceeds 29.5 kg (65 lb).
  - Child's shoulders are above the top Shoulder Harness Slots.
  - Top of child's ears are above the top of the car seat's Headrest in its highest adjustment position.
- This car seat must be installed by an adult.
- Never allow the child to buckle themselves in this car seat.
- Snugly adjust Harness provided with this car seat around child.
- Never use this child restraint Rear-Facing without the Anti-Rebound Bar.

 **WARNING – DEATH or  
SERIOUS INJURY can occur (continued)**

- Always use the Buckle Pad supplied with this car seat for children weighing up to 10 kg (22 lb).
- Never use the longer Crotch Strap length in the rear Crotch Strap Slot.
- Never use this seat without the Headrest.
- Do not use this child restraint with motorized or door mounted belt systems.
- When installing this child seat Forward-Facing, it must be secured by the Top Tether strap, and the UAS belt or vehicle seat belt as shown in this instruction manual.
- UAS Belt or vehicle belt must stay tightly adjusted on car seat at all times.
- Always secure the Top Tether provided with this child restraint as specified in this instruction manual.
- Do not use this car seat after a crash of any kind. A crash can cause damage to this car seat that you cannot see.
- Always securely attach this car seat to the vehicle, even when not occupied. An unsecured car seat can injure other occupants in a crash.
- Never leave child unattended.
- Never leave child in car seat when Harness is not buckled and properly adjusted, children can strangle on loose Harness straps.

 **WARNING – DEATH or  
SERIOUS INJURY can occur (continued)**

- Do not use this car seat after nine (9) years from the date of manufacture. The date of manufacture can be found on the label affixed to the back of this car seat's base.
- Do not use accessories or parts with this car seat other than those provided by Clek Inc. Use of accessories or parts from other manufacturers could alter the performance of this car seat.
- Do not attempt to make repairs to or otherwise modify or tamper with this car seat.
- Never use this car seat if it is damaged or is missing parts.
- Keep this manual in the storage compartment located on the back of this car seat for future use.
- Never use a second-hand car seat or a car seat whose history you do not know.
- Register your child restraint with Clek Inc.
- Avoid burn injury — always touch the surfaces that will contact your child first before putting them in this car seat. This car seat can become very hot if left in the sun and can burn your child's skin.

## Certification

- This child restraint system conforms to all applicable requirements of Canadian Motor Vehicle Safety Standards 213 and 213.1 and is certified for use in motor vehicles.
- This restraint is certified for use in Aircraft.

## Vehicle Classification

- This car seat is for use only in the following classes of vehicles: passenger cars, trucks, and multi-purpose vehicles such as SUVs (sport utility vehicles) and CUVs (crossover utility vehicles).

## Size & Age Limitations

### **WARNING**

- Use only in a Rear-Facing position when using this car seat with an infant less than one year old and weighing less than 10 kg (22 lb).
- Failure to choose the correct car seat mode (Rear-Facing or Forward-Facing) and to properly secure this seat and your child can increase the risk of injury or death.
- Never use this seat with children not able to sit upright alone. Their head may fall forward, which could restrict their ability to breathe.

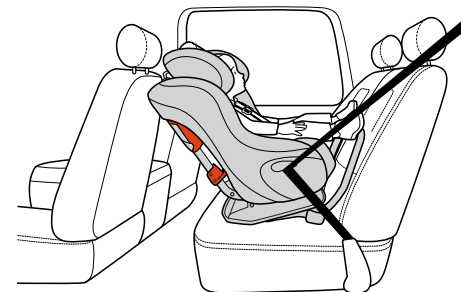
## American Academy of Pediatrics (AAP) Recommendation

The AAP advises parents to keep their toddlers in Rear-Facing car seats until age 2, or until they reach the maximum height and weight for their seat.



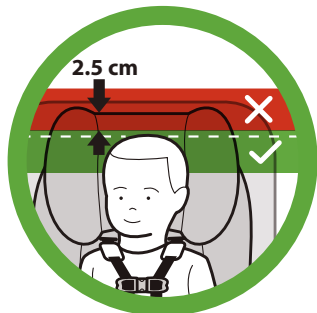
### When Using This Car Seat in Rear-Facing Mode

- All infants less than one year old or 10 kg (22 lb) **MUST** be Rear-Facing.
- Child's weight is between 6.4–18.1 kg (14 and 40 lb), AND
- Child's height is between 64 and 110 cm (25 and 43 in.), AND
- Child is able to sit upright alone.





- The top of the child's head must be at least 2.5 cm (1") below the top of the car seat's Headrest, as shown in **Figure 1**. If the top of the child's head is less than 2.5 cm (1") below the top of the Headrest in the highest adjustment position, your child is too large for using this car seat Rear-Facing and must be transitioned to Forward-Facing use with this car seat.



**Figure 1**

- The Shoulder Harness Straps must be through Shoulder Harness slots at or below and closest to the child's shoulders, as shown in **Figure 2**.

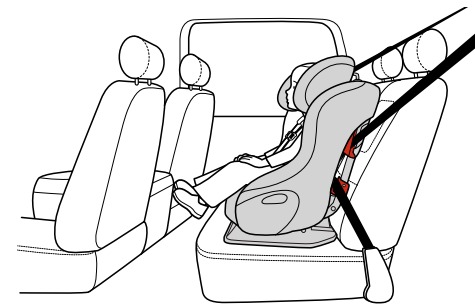


**Figure 2**



## When Using This Car Seat in Forward-Facing Mode

- Child's weight is between 10 and 29.5 kg (22 and 65 lb), AND
- Child's height is between 76 to 124 cm (30 and 49 in.), AND
- Child is at least 1 year of age, AND
- The tops of the child's ears **MUST** be below the top of the car seat's Headrest, as shown in **Figure 3**. If the tops of the child's ears are above the top of this car seat's Headrest in the highest adjustment position, your child is too large for this car seat.
- The Shoulder Harness Straps must be through Shoulder Harness slots at or above and closest to the child's shoulders, as shown in **Figure 4**. If the child's shoulders are above the highest set of Shoulder Harness Slots in the car seat's seat back, your child is too large for this car seat.
- If child weighs more than 18.1 kg (40 lb) or the weight limit specified for UAS use in your vehicle owner's manual, this car seat must be installed with the vehicle belt and Top Tether.



**Figure 3**



**Figure 4**

# Adjusting Car Seat to Fit Your Child

**! WARNING – DEATH or SERIOUS INJURY can occur**

- Never use this car seat without the Headrest.

**IMPORTANT:** This Car Seat is shipped without the Headrest attached. The Headrest must be installed on the seat prior to use.

## Installing Headrest

Insert the Headrest support rods into the Headrest guides in the top of the seat back as shown in **Figure 5** and push the headrest down until it locks into position.

**NOTE:** It may be necessary to rock the Headrest back and forth from front to back in order to get the support rods into the guides.

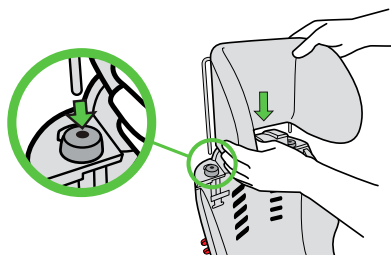


Figure 5

## Adjusting Headrest

### Step 1

Press the button on the Headrest Adjuster on the right-hand side of the seat (when facing front of seat) (1) and raise or lower the Headrest into the desired position (2) as shown in **Figure 6**.

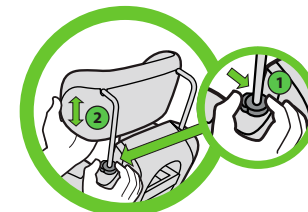


Figure 6

### Step 2

Check for proper adjustment of Headrest.

The bottom of the Headrest must always be at or above the Harness Slots in use.

**Rear-Facing:** The top of the child's head must be at least 2.5 cm (1") below the top of the car seat's Headrest, as shown in **Figure 7**. If the top of the child's head is less than 2.5 cm (1") below the top of the Headrest in the highest adjustment position, your child is too large for using this car seat Rear-Facing and must be transitioned to Forward-Facing use with this car seat.

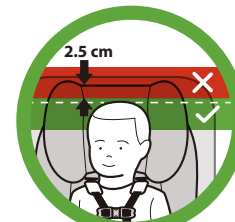


Figure 7

**Forward-Facing:** The tops of the child's ears **MUST** be below the top of the car seat's Headrest, as shown in **Figure 8**. If the tops of the child's ears are above the top of this car seat's Headrest in the highest adjustment position, your child is too large for this car seat.



Figure 8

## Crotch Strap Adjustment

Check position of Crotch Strap:

- The Crotch Strap must be through the Crotch Strap Slot located at or behind and closest to the front of the child's crotch as shown in **Figure 9**.



**Figure 9**

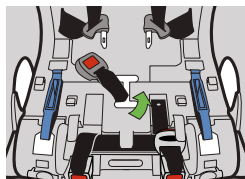
### Step 1

Remove the Seat Cushion, see "Removing/Installing Seat Cushion" on page 72.

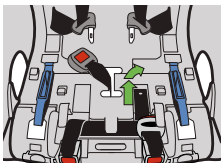
### Step 2

To move the Crotch Strap from one position to the other:

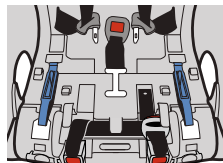
- Slide the belt to one side of the Crotch Strap Slot and push the edge of the belt into the adjustment slot as shown in **Figure 10**.
- Slide the Crotch Strap into the other Crotch Strap Slot as shown in **Figure 11**, ensuring that the red release button on the buckle faces out of the seat as shown in **Figure 12**.



**Figure 10**



**Figure 11**



**Figure 12**

### Step 3

**NOTE:** For larger children, the Crotch Strap can be lengthened and installed in the forward Crotch Strap Slot.

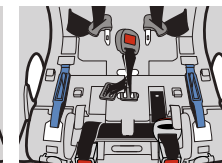
**IMPORTANT:** NEVER use the longer Crotch Strap length in the rear Crotch Strap Slot.

### TO LENGTHEN THE CROTCH STRAP

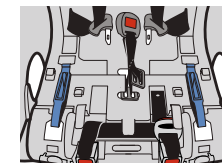
- Slide the belt to one side of the Crotch Strap Slot and push the edge of the belt into the adjustment slot as shown in **Figure 13**.
- Slide the crotch strap out of the Crotch Strap Slot as shown in **Figure 14**.
- Select the longer Crotch Strap length and slide the crotch strap into the outer Crotch Strap Slot as shown in **Figure 15**, ensuring that the red release button on the buckle faces out of the seat as shown in **Figure 16**.



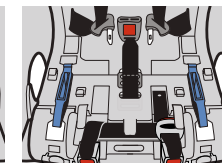
**Figure 13**



**Figure 14**



**Figure 15**



**Figure 16**

### Step 4

Install the Seat Cushion, see "Removing/Installing Seat Cushion" on page 72.

## Shoulder Harness Adjustment

### **WARNING – DEATH or SERIOUS INJURY can occur**

- To prevent ejection in a crash, the loops at the end of the Shoulder Harness Straps must be properly attached to the Metal Harness Plate.
- To prevent loose Harness and risk of ejection in a crash, Harness must be properly routed under bottom of seat back cover.
- To prevent loose Harness and risk of ejection in a crash, the Shoulder Harness Straps must be routed through Shoulder Harness Slots at the same height on each side and in the pad and seat back.

## SHOULDER HARNESS SLOT SELECTION

Place child in seat and select the appropriate set of Shoulder Harness Slots for the direction child is facing.

**For Rear-Facing Use:** Choose the Shoulder Harness Slots at or just below and closest to the shoulders of your child as shown in **Figure 17**.

**For Forward-Facing Use:** Choose the Shoulder Harness Slots at or just above and closest to the shoulders of your child as shown in **Figure 18**.



**Figure 17**



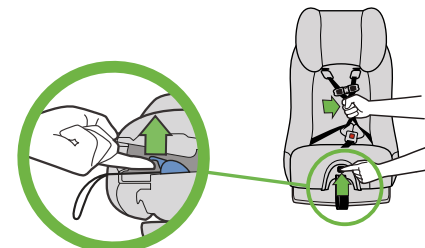
**Figure 18**

## SHOULDER HARNESS UNTHREADING

### Step 1

Loosen Harness to largest size:

- While lifting up on Harness Adjuster Tab, pull out on Shoulder Harness Straps until they stop as shown in **Figure 19**.



**Figure 19**

### Step 2

Remove Top Tether from storage. See “Top Tether Storage” on page 78.

### Step 3

Remove Shoulder Harness Access Panel from back of car seat:

- Twist the access panel lock counter-clockwise and pull to remove as shown in **Figure 20**.

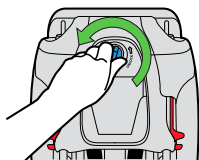


Figure 20

### Step 4

Remove loops at ends of Shoulder Harness Straps from Metal Harness Plate by sliding strap out through slot in Metal Harness Plate as shown in **Figure 21**.

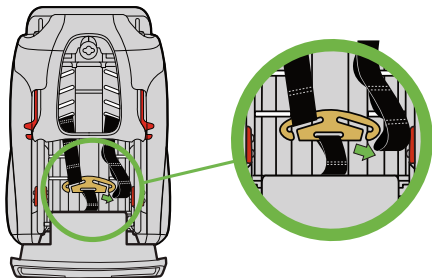


Figure 21

### Step 5

From front of car seat, pull Shoulder Harness Straps out of seat back.

## SHOULDER HARNESS RETHREADING

### Step 1

Check that Harness Straps are not twisted and from front of seat, insert Shoulder Harness Straps through the chosen Shoulder Harness Slots as shown in **Figure 22**. Straps **MUST** go through the Shoulder Harness Slots at the same height on each side

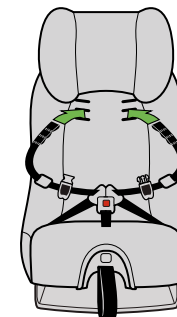


Figure 22

### Step 2

Route Shoulder Harness under bottom of seat back cover (1) as shown in **Figure 23**.

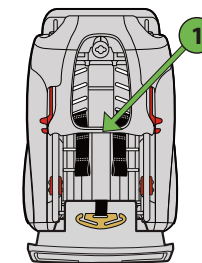
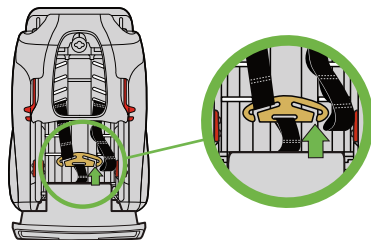


Figure 23

### Step 3

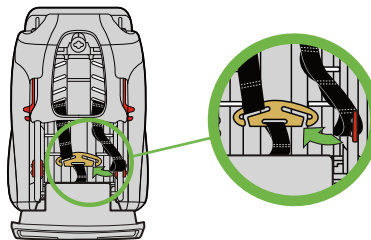
Attach desired loops at end of Shoulder Harness Straps to Metal Harness Plate by sliding strap into slot in plate as shown in **Figure 24**.



**Figure 24**

### TO LENGTHEN THE SHOULDER HARNESS WEBBING

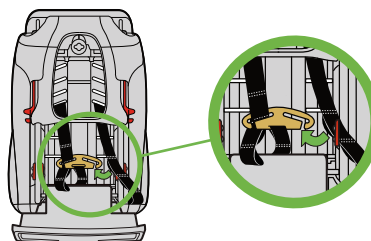
**For larger children:** to make the Harness longer, attach the Metal Harness Plate to the loop at the end of the Shoulder Harness Strap as shown in **Figure 25**.



**Figure 25**

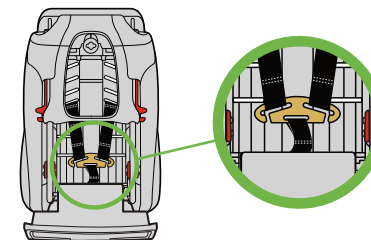
### TO SHORTEN THE SHOULDER HARNESS WEBBING

**For smaller children:** to make the Harness shorter, attach the Metal Harness Plate to the loop further in from the end of the Shoulder Harness Strap as shown in **Figure 26**.



**Figure 26**

Check that both Shoulder Harness Straps are attached to the Metal Harness Plate on the same loop while ensuring that each Shoulder Harness Strap is completely inside the slot in metal Harness Plate as shown in **Figure 27**.

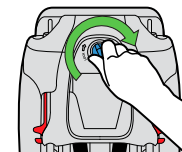


**Figure 27**

### Step 4

Reattach Shoulder Harness Access Panel to back of car seat:

- Insert the access panel and twist the access panel lock clockwise as shown in **Figure 28**.



**Figure 28**

### Step 5

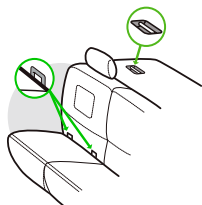
If installing this car seat rear-facing, store the Top Tether. See "Top Tether Storage" on page 78.

## Vehicle Information

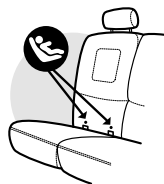


### Vehicle Universal Anchorage System (UAS)

- UAS stands for Universal Anchorage System. This term refers to the anchors built into a vehicle for attaching child restraints and consists of two lower anchors at the crease between the vehicle seat back and vehicle seat cushion and a top tether anchor behind the vehicle seat as shown in **Figure 29**.
- 2003 or newer model year vehicles have at least two seating locations with a UAS Anchorage System. Some 2001 and 2002 model year vehicles have UAS Anchorage Systems. 2000 model year vehicles or older DO NOT have UAS Anchorage Systems. See your vehicle owner's manual if you are unsure if your vehicle is equipped with a UAS Anchorage System.
- See your vehicle owner's manual for seating positions which can be used with UAS.
- If not readily visible, the UAS lower anchors may be noted by a symbol located near the crease between the vehicle seat back and vehicle seat cushion, as shown in **Figure 30**.
- If covered, the top tether anchor locations may be identified by a symbol as shown in **Figure 31**.



**Figure 29**



**Figure 30**



**Figure 31**

## Vehicle Seat Location Requirements

### **WARNING**

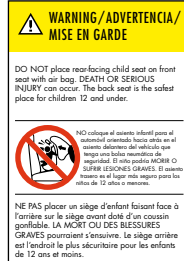
- According to accident statistics, children 12 and under are safer when properly restrained in rear vehicle seating positions, rather than front seating positions.



- Before using this car seat, reference your vehicle owner's manual for:
  - Car seat installation instructions
  - Information about air bags and car seat use
  - Vehicle UAS lower anchor weight limit. If no recommended weight limit is present in your vehicle owner's manual, call your vehicle manufacturer. If no guidance is available, assume a vehicle lower anchor weight limit of 18.1 kg (40 lb).
- For a toddler over one year old and Forward-Facing, if a vehicle front seat location with an air bag must be used, follow the vehicle manufacturer's instructions for child restraint use and move the vehicle seat back as far as possible.

## **WARNING – DEATH or SERIOUS INJURY can occur**

- Do not use this child restraint Rear-Facing in a front vehicle seat location with an air bag. Child's head and neck may be seriously injured when an inflating air bag hits back of child restraint.
- Never use this car seat in a front vehicle seat location unless recommended by your vehicle owner's manual.
- Improper placement of this car seat in your vehicle increases the risk of serious injury or death. Some seating positions in your vehicle may not be safe for this car seat. Some vehicles do not have any seating positions that can be used safely with this car seat. If you are not sure where to place this car seat in your vehicle, consult your vehicle owner's manual or call 1-866-656-2462.



**Figure 32**

- Install this car seat only on vehicle seats that face forward. NEVER install this car seat on vehicle seats facing sideways or backwards, as shown in **Figure 32**.
- Only use this car seat on vehicle seats with seat backs that lock in an upright position. Check that the vehicle seat back is locked in an upright position recommended by the vehicle owner's manual for use when installing a child restraint.

## Vehicle Belt Requirements

Refer to the vehicle owner's manual for information regarding car seat installation and vehicle belt use with a car seat.

## **WARNING**

- Never use this car seat with a vehicle belt that is cut, damaged, frayed or inoperable.
- Using this car seat with a vehicle belt system unsafe for use with this car seat can result in serious injury or death. Pay careful attention to these systems; some of the seat belts that are not safe to use look very much like seat belts that are safe to use. If you are unsure, consult your vehicle owner's manual or call 1-866-656-2462.
- Not all vehicle belts can be used with a car seat. This car seat must be held tight at all times by the lap belt or lap portion of the lap/shoulder belt.
- Never use an inflatable vehicle belt to secure this car seat.



## Vehicle Belt Systems

- NEVER use a passive restraint — lap or shoulder belt mounted on door, as shown in **Figure 33**.



**Figure 33**

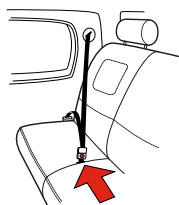
- NEVER use a passive restraint — lap belt with a motorized shoulder belt, as shown in **Figure 34**.



**Figure 34**

- NEVER use an inflatable vehicle belt.
  - Check the belt for labels and refer to your vehicle owner's manual.

- Buckle/Lap Belt Anchor Forward of Seat Bight – lap belt or lap belt portion of a lap/shoulder belt or buckle comes out of vehicle seat bottom forward of the seat back, as shown in **Figure 35**.



**Figure 35**

- May not allow for secure installation of this car seat in some cases. Check for movement of car seat after installation. If car seat is not secure, DO NOT use this vehicle belt.

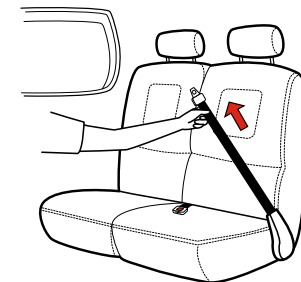
- Retractable Lap Belts – Lap belt is mounted on a retractor which automatically pulls the lap belt back in when released, as shown in **Figure 36**.

- If this type of lap belt is equipped with an Emergency Locking Retractor (ELR) it should NEVER be used with a car seat.
- If this type of lap belt is equipped with an Automatic Locking Retractor (ALR), or a Switchable Locking Retractor (SLR), it can be used. See your vehicle owner's manual for more information on SLR retractor belts. To check if your retractable lap belt is equipped with an ALR retractor:

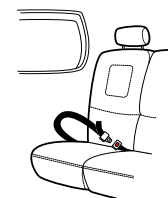
1. Pull the belt all the way out until it stops.
2. Allow the belt to pull back in about 15 cm (6 in.).
3. Pull out on belt again. If the belt will not pull out again, it is equipped with an ALR retractor.

- Manually Adjustable Lap Belts, see **Figure 37** – Length can be manually adjusted. Does not retract into the vehicle.

- Most manually adjustable lap belts will allow for secure installation, but if the locking latch plate slides, not allowing for a secure installation, it may be necessary to flip the locking latch plate over to get a secure installation as shown in **Figure 37a**.



**Figure 36**



**Figure 37**



**Figure 37a**

- Lap/Shoulder belts with a sliding latchplate – Shoulder belt is mounted on a retractor which automatically pulls the shoulder belt back in when released as shown in **Figure 38**. Latchplate slides freely along the webbing of the vehicle belt as shown in **Figure 38a**.



**Figure 38**



**Figure 38a**

- If this type of lap/shoulder belt is equipped with an Emergency Locking Retractor (ELR), it may be used.
- If this type of lap/shoulder belt is equipped with an ELR/ALR Switchable Locking Retractor (SLR), it can be used. To check if your lap/shoulder belt is equipped with an SLR:
  1. Slowly pull the shoulder belt all the way out until it stops.
  2. Allow the shoulder belt to pull back in about 15 cm (6”).
  3. Pull out on shoulder belt again. If the belt will not pull out again, it is equipped with a SLR

**NOTE:** Some vehicle seat belt systems may have a lap/shoulder belt equipped with a latchplate which appears to hold the lap portion at a fixed length when the belt is pulled tight. This type of lap/shoulder belt is compatible. It may still have a switchable locking retractor (SLR).

**See your vehicle owner’s manual for more information on installing a child seat using the vehicle belt.**



## Installing/Removing Rear-Facing Car Seat

**! WARNING – DEATH or SERIOUS INJURY can occur**

- Never use this car seat Rear-Facing in a vehicle front seating location with an air bag.
- UAS or vehicle belt must be routed through Rear-Facing Belt Path when using car seat Rear-Facing.
- Anti-Rebound Bar must be used when using seat Rear-Facing.
- UAS or vehicle belt must stay tightly adjusted around car seat at all times.
- Failure to properly install or use this car seat increases the risk of serious injury or death to the child and others in a sharp turn, sudden stop or crash.
- Recline Foot must be in the Rear-Facing position when this seat is used Rear-Facing.
- Seat must be installed within an acceptable recline zone for the child’s age when using seat Rear-Facing.
- To avoid injury this car seat must be installed by an adult.

 **WARNING – DEATH or  
SERIOUS INJURY can occur (continued)**

- Never leave this car seat unsecured in your vehicle. This car seat must remain secured even when not in use. In a sharp turn, crash or sudden stop, an unsecured car seat can be thrown around and could severely injure vehicle occupants.
- When installing this child restraint Rear-Facing, it must be secured by the UAS belt or vehicle seat belt as shown in this instruction manual.
- Use only with children who weigh between 6.4 and 18.1 kg, (14 and 40 lb) and whose height is between 64 and 110 cm (25 and 43 in.).



## Installing Rear-Facing Car Seat With UAS

 **WARNING – DEATH or  
SERIOUS INJURY can occur**

- Only use the car seat UAS system in vehicle seating locations designated by the vehicle manufacturer for use with UAS and that have a standard anchor spacing of 280 mm (11 in.).
- UAS Push-on Connectors must be secured to the vehicle UAS lower anchors only. Connection to other vehicle anchors or vehicle components could result in the anchor tearing free in a crash.
- Never attach more than one push-on connector to a vehicle lower anchor unless recommended by the vehicle owner's manual for that vehicle.
- UAS belt must be routed through Rear-Facing Belt Path.

### Step 1

Rotate Recline Foot to Rear-Facing position by pulling on edge of Recline Foot and rotating it towards the front of the seat until it locks in to position, as shown in **Figure 39**.

- Anti-Rebound Bar must also be securely attached to the seat, see “Installing/Removing Anti-Rebound Bar” on page 73.

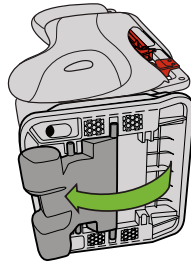


Figure 39

### Step 2

Select a Forward-Facing vehicle seating location which has UAS.

Locate the UAS anchors as shown in **Figure 40**. See “Vehicle Universal Anchorage System (UAS)” on page 25 in this manual and check your vehicle owner’s manual for further information.

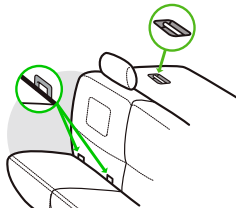


Figure 40

### Step 3

If the vehicle seat back is adjustable, make sure the seat back is locked in a more upright position. Refer to vehicle owner’s manual for recommended seat back angle. DO NOT install or use this car seat while the vehicle seat back is excessively reclined, as shown in **Figure 41**.



Figure 41

### Step 4

Remove Seat Cushion, see “Removing/Installing Seat Cushion” on page 72.

Remove UAS belt from its storage location under the Seat Cushion, see “UAS Belt Storage” on page 76.

Lengthen the UAS belt by pressing the adjuster release button while pulling belt to extend the length of lower anchor belt as shown in **Figure 42**.

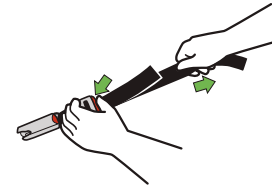


Figure 42

### Step 5

Route UAS Belt through the Rear-Facing Belt Path, taking care that there are no twists in the UAS Belt. UAS belt adjuster must be on the right side of the seat when facing it, as shown in **Figure 43**.

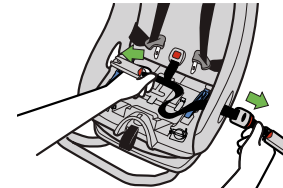


Figure 43

### Step 6

Position UAS Belt under Belt Tabs and over both Rear-Facing Belt Lock-offs as shown in **Figure 44**.

Check that Crotch Strap is not under UAS Belt as shown in **Figure 44a**.

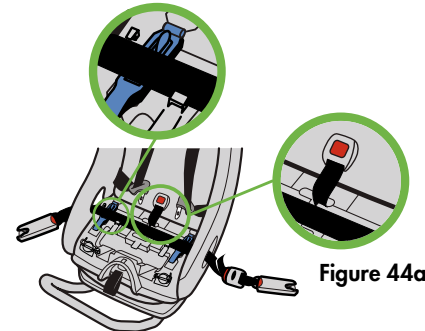


Figure 44

### Step 7

Place car seat Rear-Facing in the vehicle seat location selected with Rear-Facing Belt Path toward vehicle seat back and centered between the vehicle lower anchors as shown in **Figure 45**.

**IMPORTANT:** Car Seat base must NOT extend beyond the edge of the vehicle seat cushion as shown in **Figure 45a**.

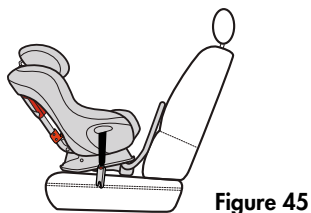


Figure 45

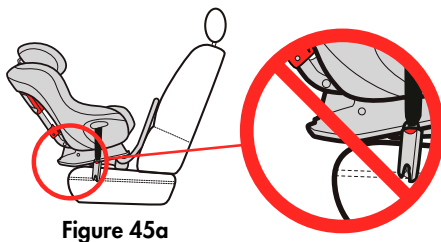


Figure 45a

### Step 8

Position the seat so that the Rear-Facing Level Reference Line appropriate for the child's weight is parallel with the ground as shown in **Figure 46**.

- If using with a child under 10 kg (22 lb), position the seat with the more reclined Reference Line (top line) parallel to the ground
- If using with an older child who is over 10 kg (22 lb), position the seat with the more upright Reference Line (bottom line) parallel to the ground

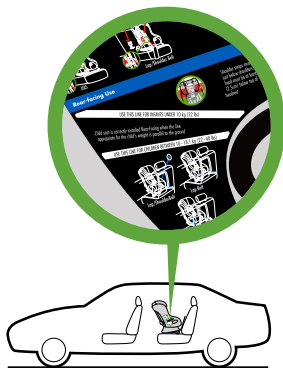


Figure 46

### Step 9

Secure UAS Push-on Connectors to the vehicle UAS lower anchors. For each connector:

- Position red release button of UAS Push-On Connector facing away from car seat.
- Align UAS Connector with the vehicle UAS anchor and press the UAS Connector against the UAS anchor until you hear the UAS Connector click, as shown in **Figure 47**.
- Pull on UAS Connector to check that it is securely locked on the vehicle UAS anchor.

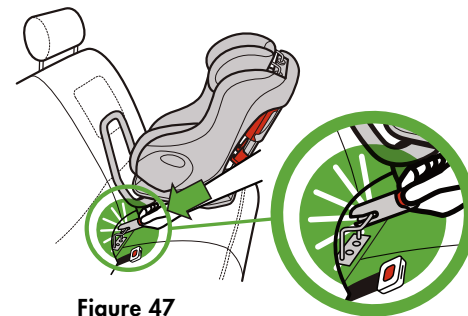


Figure 47

### Step 10

Tighten UAS Belt to secure the car seat.

- Press down in center of car seat to depress the vehicle seat cushion and pull end of UAS Belt to tighten as shown in **Figure 48**.

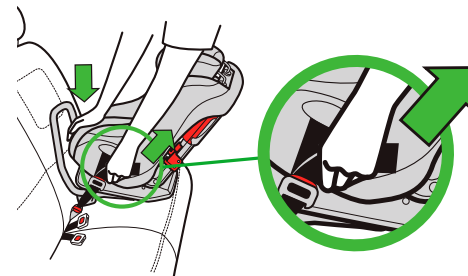


Figure 48

### Step 11

Check for secure installation. Gripping car seat at top of armrests, pull car seat front to back and left to right to check for secure installation as shown in **Figure 49**. UAS belt MUST stay tight and child restraint should not move more than 2.5 cm (1") in any direction.

- If UAS belt does not stay tight or car seat cannot be securely installed, try a different UAS location or install using the vehicle belt, see "Installing Rear-Facing Car Seat With Vehicle Belt" on page 41.

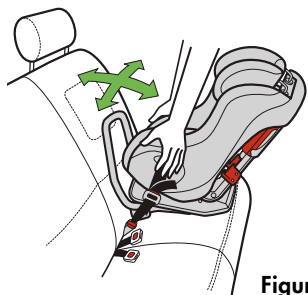


Figure 49

### Step 12

Verify that the Rear-Facing Level Reference Line appropriate for the child's weight is parallel to the ground as shown in **Figure 46**.

### Step 13

Install Seat Cushion, see "Removing/Installing Seat Cushion" on page 72.



## Removing Rear-Facing Car Seat Installed With UAS

### Step 1

Loosen UAS Belt by pressing the adjuster button on the UAS Belt adjuster and pulling out on UAS Belt as shown in **Figure 50**.

- Pressing down in center of car seat to reduce tension on UAS Belt will make it easier to loosen UAS belt.

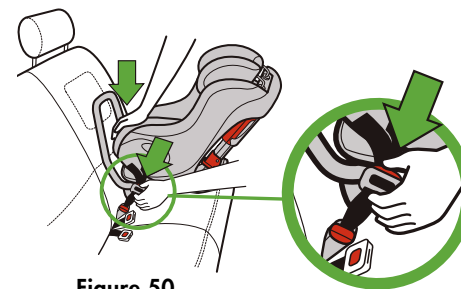


Figure 50

### Step 2

Remove UAS Push-on Connectors from vehicle lower anchors.

- Press and hold red release button while pulling UAS push-on Connectors as shown in **Figure 51**.
- Repeat to remove push-on connector on opposite side.

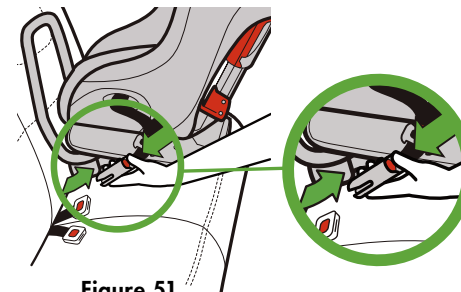


Figure 51

### Step 3

Remove this car seat from vehicle.

### Step 4

Store the UAS Belt, see "UAS Belt Storage" on page 76.



## Installing Rear-Facing Car Seat With Vehicle Belt

**⚠ WARNING – DEATH or SERIOUS INJURY can occur**

- Not all vehicle belts are safe for use with this car seat. Read the “Vehicle Belt Requirements” section in this manual.
- Vehicle Belt must be routed through Rear-Facing Belt Path when car seat is installed Rear-Facing.

### Step 1

Rotate Recline Foot to Rear-Facing position by pulling on edge of Recline Foot and rotating it towards the front of the seat until it locks in to position, as shown in **Figure 52**.

- Anti-Rebound Bar must also be securely attached to the seat, see “Installing/Removing Anti-Rebound Bar” on page 73.

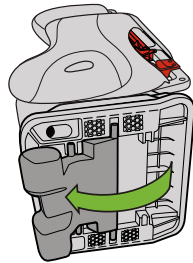


Figure 52

### Step 2

Select a forward-facing vehicle seating location which has a vehicle belt which can be used with this car seat.

### Step 3

If the vehicle seat back is adjustable, make sure the seat back is locked in a more upright position. Refer to vehicle owner’s manual for recommended seat back angle. **DO NOT** install or use this car seat while the vehicle seat back is excessively reclined, as shown in **Figure 53**.



Figure 53

### Step 4

Remove Seat Cushion, see “Removing/Installing Seat Cushion” on page 72.



Figure 54

### Step 5

Place car seat Rear-Facing in the vehicle seat location selected with Rear-Facing Belt Path toward vehicle seat back and centered in seating position as shown in **Figure 54**.

**IMPORTANT:** Car Seat base must **NOT** extend beyond the edge of the vehicle seat cushion as shown in **Figure 54a**.

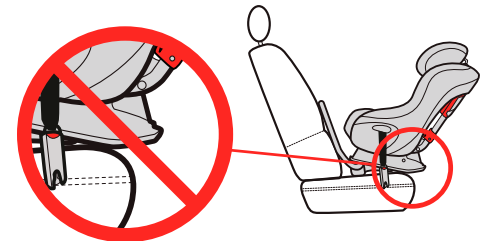


Figure 54a

### Step 6

Position the seat so that the Rear-Facing Level Reference Line appropriate for the child's weight is parallel with the ground as shown in **Figure 55**.

- If using with an infant under 10 kg (22 lb), position the seat with the more reclined Reference Line (top line) parallel to the ground
- If using with an older child who is over 10kg (22 lb), position the seat with the more upright Reference Line (bottom line) parallel to the ground

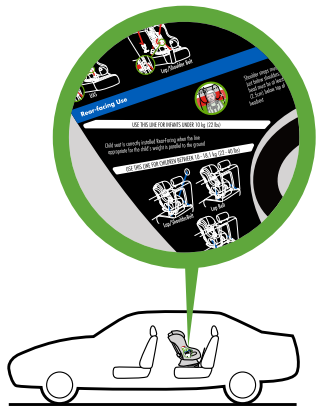


Figure 55

### Step 7

If installing with a lap/shoulder belt, open one (1) Rear-Facing Belt Lock-off as shown in **Figure 56**. You may use whichever Lock-off provides the most secure installation.

**NOTE:** If your vehicle's belt system is equipped with an ELR/ALR switchable retractor (SLR), or if you are installing with a lap belt, you may skip **Step 7**, and install your car seat **WITHOUT** using a Rear-Facing Belt Lock-off. Refer to the Child Restraint section of your vehicle manual to understand what type of belt system your vehicle is equipped with.

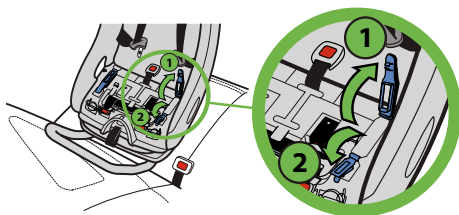


Figure 56

### Step 8

Route vehicle belt through the Rear-Facing Belt Path and under all four Belt Tabs, shown in **Figure 57a**, and buckle vehicle belt, as shown in **Figure 57**.

Check that Crotch Strap is not under the vehicle belt as shown in **Figure 57b**.

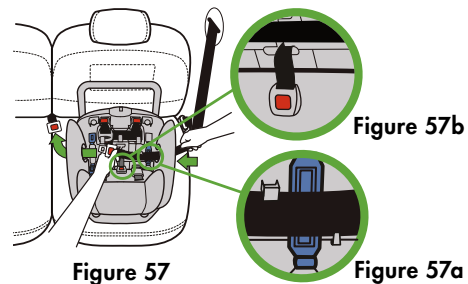


Figure 57

Figure 57b

Figure 57a

### Step 9

Choose the option that matches the type of installation you are doing:

#### Option 1 — Installing with lap/shoulder belt using a Rear-Facing Lock-off:

Tighten vehicle belt to secure the car seat

- Press down in center of car seat to depress the vehicle cushion and pull the shoulder portion of lap/shoulder belt to tighten as shown in **Figure 58**.
- While holding the vehicle belt tight, close Rear-Facing Belt Lock-off as shown in **Figure 59**.



Figure 58

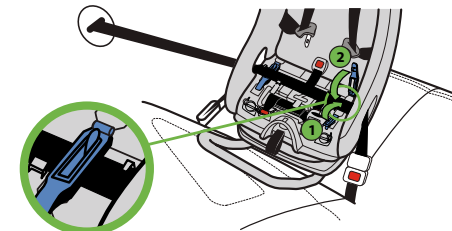


Figure 59



**IMPORTANT:** If Lock-off will not close easily, it may be necessary to loosen the belt slightly in order to properly position the belt under the Belt Tabs and close the Lock-off.

Check that the entire lap/shoulder belt (both the lap and shoulder portions of the belt) is through the Rear-Facing Belt Lock-off being used and under all four Belt Tabs as shown in **Figure 60**. Close-up of Belt Tabs is shown in **Figure 60a**.

**NOTE:** If your vehicle's belt system is equipped with an ELR/ALR switchable retractor (SLR), it is also recommended to engage the ALR by slowly pulling the vehicle belt all the way out until it stops. Then, feed the belt back into the retractor.

### Option 2 — Installing with lap/shoulder belt WITHOUT using a Rear-Facing Lock-off:

Tighten vehicle belt to secure the car seat

- Engage the vehicle's ALR by slowly pulling the vehicle belt all the way out until it stops. Then, feed the belt back into the retractor.

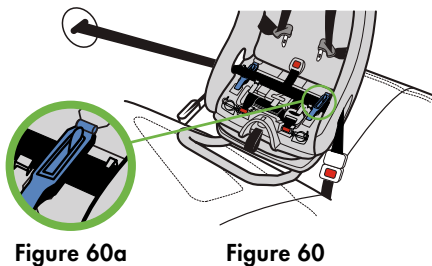


Figure 60a

Figure 60

- Press down in center of car seat to depress the vehicle cushion and pull the shoulder portion of lap/shoulder belt to tighten as shown in **Figure 61**, feeding any remaining belt webbing back into the retractor.

Check that the entire lap/shoulder belt is under all four Belt Tabs and over both Rear-Facing Lock-offs as shown in **Figure 62**.

### Option 3 — Installing with lap-only belt:

Tighten vehicle belt to secure the car seat

- Press down in center of car seat to depress the vehicle cushion and pull the end of the lap belt to tighten as shown in **Figure 63**

Check that the entire lap belt is under all four Belt Tabs and over both Rear-Facing Lock-offs as shown in **Figure 64**.

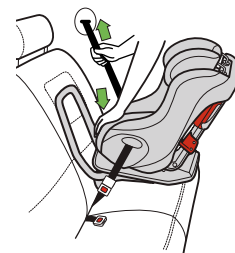


Figure 61

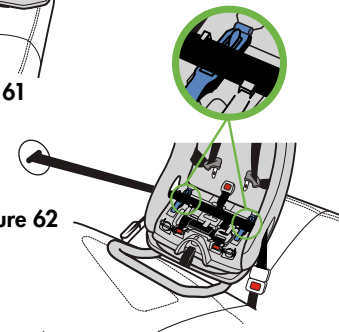


Figure 62

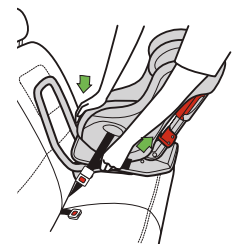


Figure 63

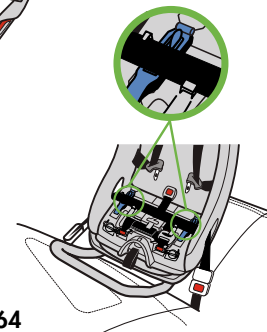
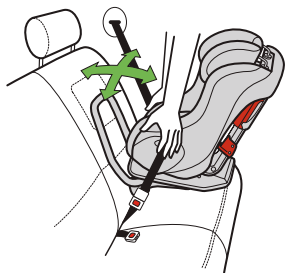


Figure 64

### Step 10

Check for secure installation. Gripping car seat at top of armrests, pull car seat front to back and left to right to check for secure installation as shown in **Figure 65**. Vehicle belt **MUST** stay tight and child restraint should not move more than 2.5 cm (1") in any direction.

- If vehicle belt does not stay tight, try installing the car seat using Rear-Facing Belt Lock-off. Go back to **Step 6**.
- If vehicle belt still does not stay tight or car seat cannot be securely installed, try a different vehicle seat location or install using UAS, see "Installing Rear-Facing Car Seat With UAS" on page 34.



**Figure 65**

### Step 11

Verify that the Rear-Facing Level Reference Line appropriate for the child's weight is parallel to the ground as shown in **Figure 55**.

### Step 12

Install Seat Cushion, see "Removing/Installing Seat Cushion" on page 72.

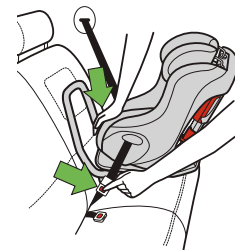


## Removing Rear-Facing Car Seat Installed With Vehicle Belt

### Step 1

Unbuckle vehicle belt.

- Pressing down in center of car seat to reduce tension on vehicle belt will make it easier to unbuckle vehicle belt as shown in **Figure 66**.



**Figure 66**

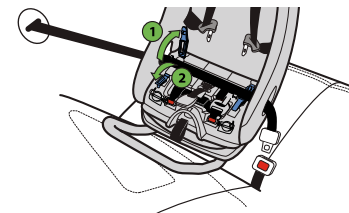
### Step 2

Remove Seat Cushion, see "Removing/Installing Seat Cushion" on page 72.

### Step 3

If used, open Rear-Facing Belt Lock-off as shown in **Figure 67**.

Remove vehicle belt from Rear-Facing Belt Path.



**Figure 67**

### Step 4

Remove this car seat from vehicle.

### Step 5

Install Seat Cushion, See "Removing/Installing Seat Cushion" on page 72.



## Installing/Removing Forward-Facing Car Seat



### **WARNING – DEATH or SERIOUS INJURY can occur**

- All children less than one year old and 10 kg (22 lb) must use this car seat Rear-Facing. Serious injury or death can result if infant faces front of vehicle.
- Recline Foot must be in the Forward-Facing position when this seat is used Forward-Facing.
- UAS belt or vehicle belt must stay tightly adjusted at all times.
- Anti-Rebound Bar must be removed when using seat Forward-Facing.
- To avoid injury, this car seat must be installed by an adult.
- Failure to properly install or use this car seat increases the risk of serious injury or death to the child and others in a sharp turn, sudden stop or crash.
- Use only with children who are at least 1 year of age, weigh between 10 and 29.5 kg (22 and 65 lb) and whose height is between 76 and 124 cm (30 and 49 in.).



### **WARNING – DEATH or SERIOUS INJURY can occur (continued)**

- When installing this child restraint Forward-Facing, it must be secured by the Top Tether strap AND either the UAS belt or the vehicle seat belt as shown in this instruction manual.
- UAS Belt or vehicle belt must be routed through Forward-Facing Belt Path and be contained in both red Forward-Facing Belt Guides when using this car seat Forward-Facing.
- Never leave this car seat unsecured in your vehicle. This car seat must remain secured even when not in use. In a sharp turn, crash or sudden stop, an unsecured car seat can be thrown around and could severely injure vehicle occupants.



## Installing Forward-Facing Car Seat With UAS

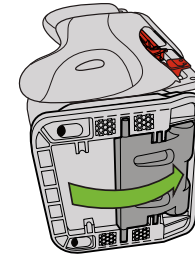
### **! WARNING – DEATH or SERIOUS INJURY can occur**

- UAS Belt must be routed through Forward-Facing Belt Path and be contained in both red Forward-Facing Belt Guides when using this car seat Forward-Facing.
- Only use the car seat UAS system in vehicle seating locations designated by the vehicle manufacturer for use with UAS and that have a standard anchor spacing of 280 mm (11 in.).
- UAS connectors must be secured to the vehicle UAS lower anchors only. Connection to other vehicle anchors or vehicle components could result in the anchor tearing free in a crash.
- Never attach more than one UAS connector to a vehicle lower anchor unless recommended by the vehicle owner's manual for that vehicle.
- Always install with a Top Tether.
- NEVER install this car seat forward-facing using UAS when your child weighs more than 18.1 kg (40 lb) or the weight specified for UAS use in your vehicle's owners manual.

### Step 1

Check that the Recline Foot is in the Forward-Facing position. If needed, grasp forward edge of Recline Foot and rotate towards the back of the seat, pressing it in to the recess in the seat bottom, as shown in **Figure 68**.

- If the Anti-Rebound Bar is attached, remove it now, see "Installing/Removing Anti-Rebound Bar" on page 73.

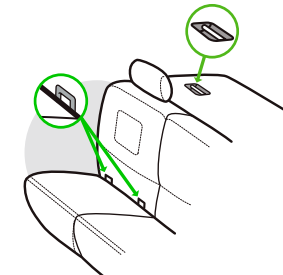


**Figure 68**

### Step 2

Select a Forward-Facing vehicle seating location which has UAS.

Locate the UAS anchors and tether anchor as shown in **Figure 69**. See "Vehicle Universal Anchorage System (UAS)" section on page 25 of this manual, and check your vehicle owner's manual for further information.



**Figure 69**

### Step 3

If the vehicle seat back is adjustable, make sure the seat back is locked in a more upright position. Refer to vehicle owner's manual for recommended seat back angle. **DO NOT** install or use this car seat while the vehicle seat back is excessively reclined, as shown in **Figure 70**.



Figure 70

### Step 4

Remove Top Tether Hook from its storage location on back of car seat. See "Top Tether Storage" on page 78.

- Lengthen Top Tether belt by pressing adjuster release button while pulling strap as shown in **Figure 71**.
- Place Top Tether Hook in the seat of the car seat.

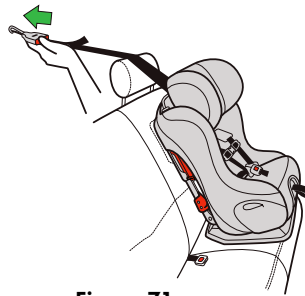


Figure 71

### Step 5

If stored, remove UAS lower connectors from storage. See "UAS Belt Storage" on page 76.

- Pull UAS Belt and Lower Connectors out the right side of the Rear-Facing belt path, as shown in **Figure 72**.

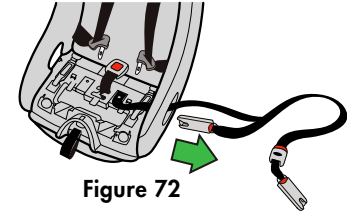


Figure 72

### Step 6

Route UAS belt through the Forward-Facing Belt Path as follows:

- Holding the UAS lower connector closest to the adjuster, route UAS belt through the Forward-Facing Belt Path so that the UAS belt passes through both red Forward-Facing Belt Guides, as shown in **Figure 73**.
- Check that the UAS belt has no twists in it, and that the red release buttons are facing away from car seat, as shown in **Figure 73a**.

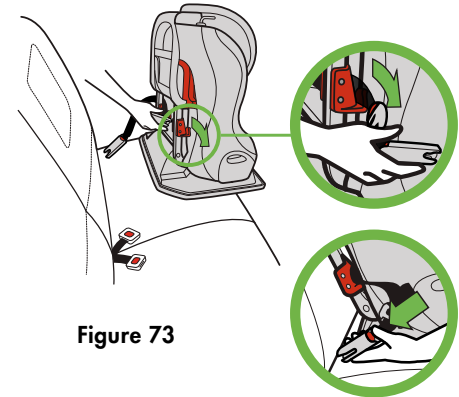
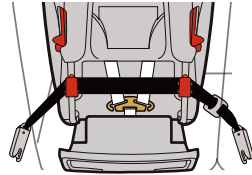


Figure 73

Figure 73a

### Step 7

Check that the entire UAS belt is laying flat, placed correctly through the Forward-Facing Belt Guides, and NOT between the Harness and seat, as shown in **Figure 74**.

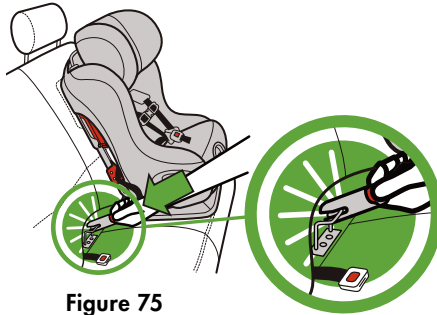


**Figure 74**

### Step 8

Place car seat Forward-Facing in the vehicle seating location selected, and connect each UAS lower connector to each corresponding vehicle UAS anchor. For each connector:

- Press the UAS Connector against the UAS anchor until you hear the UAS Connector click, as shown in **Figure 75**.
- Pull on UAS Connector to check that it is securely locked on the vehicle UAS anchor.



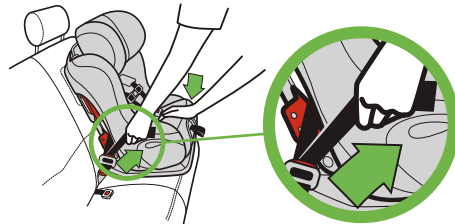
**Figure 75**

**IMPORTANT:** Check that there are no twists in the UAS belt, and that UAS belt is contained in both red Forward-Facing Belt Guides.

### Step 9

Position car seat so it is touching the vehicle seat back, and tighten UAS belt to secure it.

- Press down in center of car seat to depress the vehicle seat cushion, and pull on the end of the UAS belt to tighten as shown in **Figure 76**.

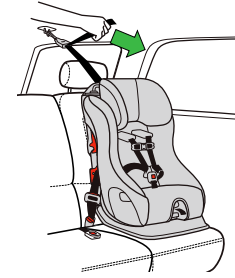


**Figure 76**

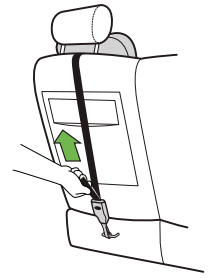
### Step 10

Attach Tether Hook to vehicle top tether anchor as shown in **Figure 77** or **77a** and pull firmly on free end of strap until Top Tether is snug.

Refer to vehicle owner's manual for recommended Top Tether routing and identification of top tether anchor point.



**Figure 77**

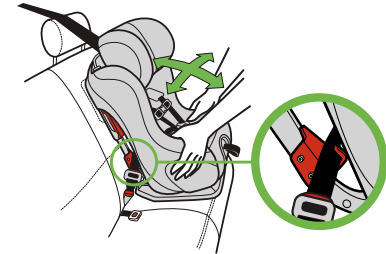


**Figure 77a**

### Step 11

Gripping car seat at top of armrests, pull car seat front to back and left to right to check for secure installation as shown in **Figure 78**. UAS belt and Top Tether must stay tight and child restraint should not move more than 2.5 cm (1") in any direction.

- If UAS belt does not stay tight or car seat cannot be securely installed, try a different UAS location or install using the vehicle belt, see "Installing Forward-Facing Car Seat With Vehicle Belt" on page 59.



**Figure 78**



## Removing Forward-Facing Car Seat Installed With UAS

### Step 1

Loosen Top Tether belt by pressing adjuster release button while pulling strap as shown in **Figure 79**.

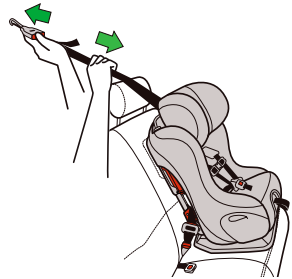


Figure 79

### Step 2

Pull in and hold retention spring on hook, then remove hook from Tether Anchor as shown in **Figure 80** and **80a**.

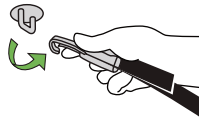


Figure 80



Figure 80a

### Step 3

Loosen UAS Belt by pressing the adjuster button and pulling out on UAS Belt as shown in **Figure 81**.

- Pressing down in center of car seat to reduce tension on UAS Belt will make it easier to loosen UAS Belt.

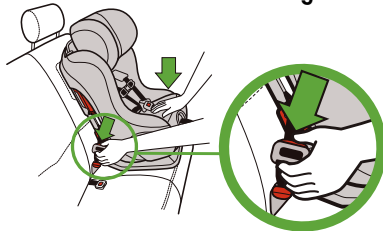


Figure 81

### Step 4

Remove each UAS Push-on Connector from vehicle lower anchors by pressing and holding the red release button while pulling the UAS push-on Connector as shown in **Figure 82**.

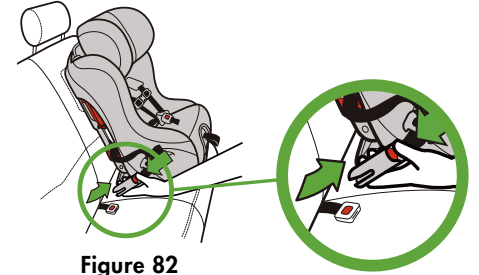


Figure 82

### Step 5

Remove car seat from vehicle.

### Step 6

Remove UAS Belt from Forward-Facing belt path and store UAS belt. See "UAS Belt Storage" on page 76.

### Step 7:

Store top tether. See "Top Tether Storage" on page 78.



## Installing Forward-Facing Car Seat With Vehicle Belt

### **⚠ WARNING – DEATH or SERIOUS INJURY can occur**

- Vehicle belt must be routed through Forward-Facing Belt Path and contained in both red Forward-Facing Belt Guides when using car seat Forward-Facing.
- Forward-Facing Belt Lock-off must be used when installing with lap/shoulder belt.
- Not all vehicle belts are safe for use with this car seat. Read the “Vehicle Belt Requirements” section in this manual.
- Always install with a Top Tether.

#### Step 1

Check that the Recline Foot is in the Forward-Facing position as shown in **Figure 83**. If needed, grasp forward edge of Recline Foot and rotate towards the back of the seat, pressing it in to the recess in the seat bottom.

- If the Anti-Rebound Bar is attached, remove it now, see “Installing/Removing Anti-Rebound Bar” on page 73.

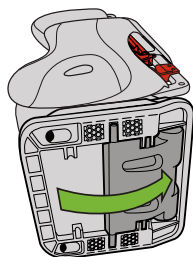


Figure 83

#### Step 2

Select a Forward-Facing vehicle seating location which has a vehicle belt which can be used with this seat and a top tether anchor point as shown in **Figure 84**.

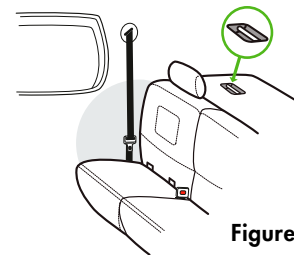


Figure 84

#### Step 3

If the vehicle seat back is adjustable, make sure the seat back is locked in a more upright position. Refer to vehicle owner’s manual for recommended seat back angle. **DO NOT** install or use this car seat while the vehicle seat back is excessively reclined, as shown in **Figure 85**.



Figure 85

#### Step 4

Remove Tether Hook from its storage location on back of car seat. See “Top Tether Storage” on page 78.

- Lengthen Top Tether belt by pressing adjuster release button while pulling strap as shown in **Figure 86**.
- Place Top Tether Hook in the seat of the car seat.



Figure 86



### Step 5

Place car seat Forward-Facing in the vehicle seat location selected, and route vehicle belt through the Forward-Facing Belt Path. Take care not to put vehicle belt between Harness and back of seat, and buckle seat belt, as shown in **Figure 87**.

- Check that seatbelt is contained in both red Forward-Facing Belt Guides as shown in **Figure 88** and not between the Harness and the seat.

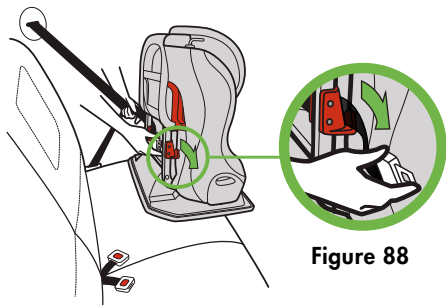


Figure 87

Figure 88

### Step 6

If installing with a lap/shoulder belt, open the Forward-Facing Belt Lock-off on the same side of the seat as the vehicle shoulder belt anchor point as shown in **Figure 89**. Place the vehicle shoulder belt through the Forward-Facing Belt Lock-off as shown in **Figure 89a**.

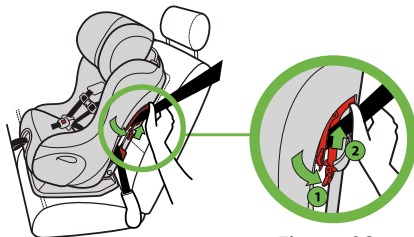


Figure 89

Figure 89a

### Step 7

Center car seat in the vehicle seating position chosen, and tighten vehicle seat belt to secure the car seat.

- Press down in center of car seat to depress the vehicle cushion and pull end lap belt only or shoulder portion of lap/shoulder belt to tighten as shown in **Figure 90** (lap belt only) or **Figure 91** (lap/shoulder belt).
- If using a lap/shoulder belt: while holding the vehicle belt tight, lock Forward-Facing Belt Lock-off as shown in **Figure 92**.

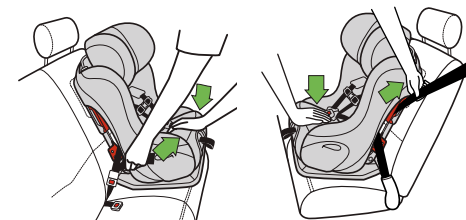


Figure 90

Figure 91

**NOTE:** Use only one Shoulder Belt Lock-Off at a time. Never use both in the Forward-Facing Mode.

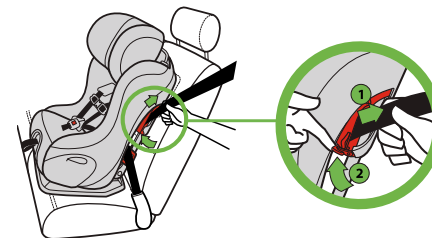


Figure 92

### Step 8

Check that the entire belt is laying flat, placed correctly through the Forward-Facing Belt Guides and NOT between the Harness and seat, as shown in **Figure 93** (lap belt only) and **Figure 94** (lap/shoulder belt.)

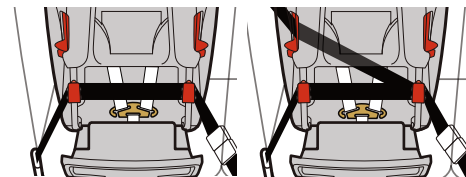


Figure 93

Figure 94

### Step 9

Attach Tether Hook to vehicle top tether anchor as shown in **Figure 95** or **Figure 95a** and pull firmly on free end of strap until Top Tether is snug.

Refer to vehicle owner's manual for recommended Top Tether routing and identification of top tether anchor point

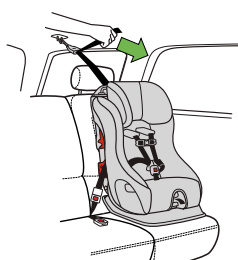


Figure 95

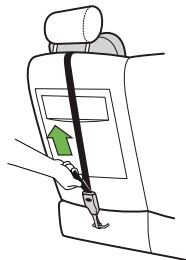


Figure 95a

### Step 10

Check for secure installation. Gripping car seat at top of armrests, pull car seat front to back and left to right to check for secure installation as shown in **Figure 96**. Vehicle belt and Top Tether must stay tight and child restraint should not move more than 2.5 cm (1") in any direction.

- If vehicle belt does not stay tight or car seat cannot be securely installed, try a different vehicle seating location or install using UAS, see "Installing Forward-Facing Car Seat With UAS" on page 51.

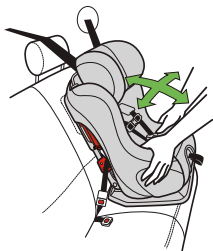


Figure 96



## Removing Forward-Facing Car Seat Installed With Vehicle Belt

### Step 1

Loosen Top Tether by pressing Tether Adjuster release button while pulling strap as shown in **Figure 97**.

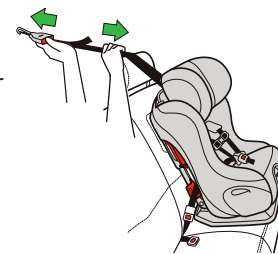


Figure 97

### Step 2

Remove Tether Hook from vehicle tether anchor.

- Pull in and hold retention spring on Tether Hook, then remove hook from tether anchor as shown in **Figure 98** and **98a**.

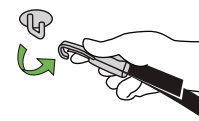


Figure 98



Figure 98a

### Step 3

Unbuckle vehicle belt.

- Pressing down in center of car seat to reduce tension on vehicle belt will make it easier to unbuckle vehicle belt as shown in **Figure 99**.

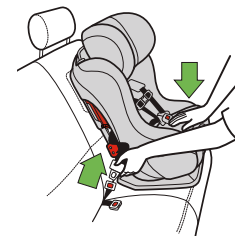
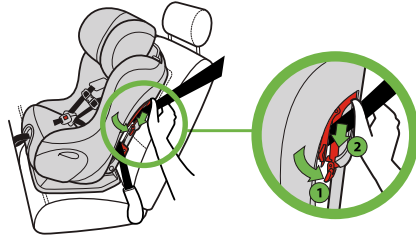


Figure 99

#### Step 4

Open Forward-Facing Belt Lock-off as shown in **Figure 100**.

Remove vehicle belt from Forward-Facing Belt Path.



**Figure 100**

#### Step 5

Remove this car seat from vehicle.

#### Step 6

Store the Top Tether, see “Top Tether Storage” on page 78.

## Securing Your Child in Car Seat

**⚠ WARNING – DEATH or SERIOUS INJURY can occur**

- Check that Harness fits child snugly each time they are buckled into seat.
- To avoid injury, child must be secured by an adult. Never allow the child to buckle themselves in this car seat.
- Child must be dressed in clothing with arms and legs that will not interfere with buckling and snugly adjusting Harness.
- Never place blankets between Harness and child.
- Prevent death from heat exposure: never leave child unattended, even when sleeping. Vehicle interiors can reach very high temperatures quickly, even when it is not a hot or sunny day.
- Strangulation hazard: child can strangle in loose Harness Straps. Never leave child in car seat when Straps are loose or undone.
- The bottom of the Headrest must always be at or above the Shoulder Harness Slots in use.
- Always use the Buckle Pad supplied with this car seat for children weighing up to 10 kg (22 lb).
- Never use the longer Crotch Strap length in the rear Crotch Strap Slot.

### Step 1

Loosen Harness:

- While lifting up on Harness Adjuster Tab, pull out on Shoulder Harness Straps as shown in **Figure 101**.

**NOTE:** If the Harness cannot be adjusted large enough, switch the Metal Harness Plate to the lower sewn loops on Shoulder Harness Straps. See **Step 3** of "Shoulder Harness Rethreading" on page 22.

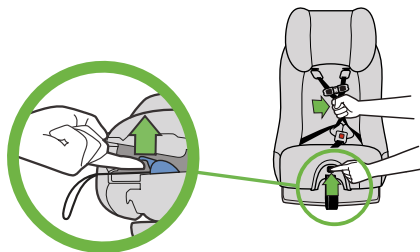


Figure 101

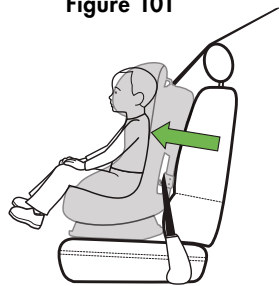


Figure 102

### Step 3

Check position of Shoulder Harness.

- **Rear-Facing** - The Shoulder Harness Straps must be through Shoulder Harness Slots at or below and closest to the child's shoulders, as shown in **Figure 103**.



Figure 103

- **Forward-Facing** - The Shoulder Harness Straps must be through Shoulder Harness Slots at or above and closest to the child's shoulders, as shown in **Figure 104**.

If the child's shoulders are above the highest set of Shoulder Harness Slots in the car seat's seat back, your child is too large for this car seat.

See "Shoulder Harness Adjustment" on page 19 to change position of Shoulder Harness Straps.

### Step 4

Check Position of Headrest:

- The bottom of the Headrest must always be at or above the Harness Slots in use.
- **Rear-Facing** - The top of the child's head must be at least 2.5 cm (1") below the top of the car seat's Headrest, as shown in **Figure 105**. If the top of the child's head is less than 2.5 cm (1") below the top of the Headrest in the highest adjustment position, your child is too large for using this car seat Rear-Facing and must be transitioned to Forward-Facing use with this car seat.



Figure 104

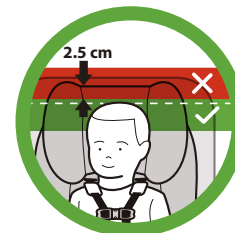


Figure 105

- **Forward-Facing** - The tops of the child's ears **MUST** be below the top of the car seat's Headrest, as shown in **Figure 106**. If the tops of the ears are above the top of this car seat's Headrest in the highest adjustment position, your child is too large for this car seat.

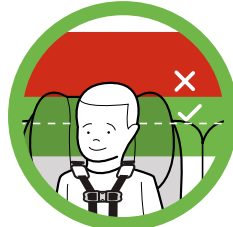


Figure 106

See "Adjusting Headrest" on page 16 to change Headrest position.

### Step 5

Check position of Crotch Strap:

- The Crotch Strap must be through the Crotch Strap Slot located at or behind and closest to the front of the child's crotch as shown in **Figure 107**. See "Crotch Strap Adjustment" on page 17 to change the position or length of the Crotch Strap.
- The Buckle Pad must be used for children weighing up to 10 kg (22 lb). Place buckle pad between child's crotch and Crotch Buckle, as shown in **Figure 108**.



Figure 107



Figure 108

### Step 6

Place child's arms through Shoulder Harness Straps and position the Straps over child's shoulders and thighs.

### Step 7

Buckle Harness:

- Insert Buckle Tongues into Buckle one at a time as shown in **Figure 109**. You should hear a click.
- Pull up on tongues to check that they are securely locked.

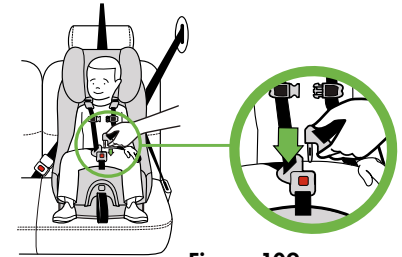


Figure 109

### Step 8

Pull Harness Adjuster Strap to snugly adjust Harness Straps as shown in **Figure 110**.

- Check that Harness Straps are snug on shoulder and thighs.
- A snug Harness should not allow any slack. It lies in a relatively straight line without sagging. It does not press on the child's flesh or push the child's body into an unnatural position.

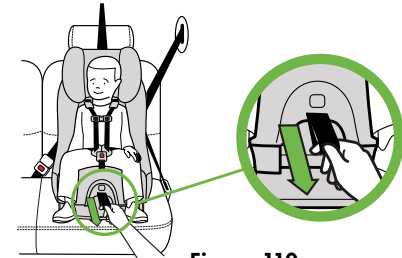


Figure 110

**NOTE:** If Harness cannot be snugly adjusted as described above, see step 3 of "Shoulder Harness Rethreading" on page 23 to make the harness smaller.

### Step 9

Close Chest Clip and position Chest Clip at arm pit level as shown in **Figure 111**.

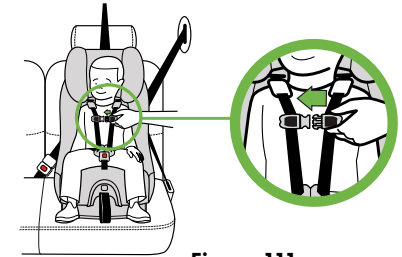


Figure 111

## Removing Your Child From Car Seat

### Step 1

Separate Chest Clip by squeezing release tabs together (1) and pulling Chest Clip apart (2) as shown in **Figure 112**.

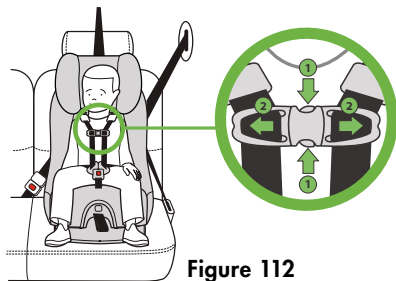


Figure 112

### Step 2

Unbuckle Harness by pressing red release button on Buckle as shown in **Figure 113**.

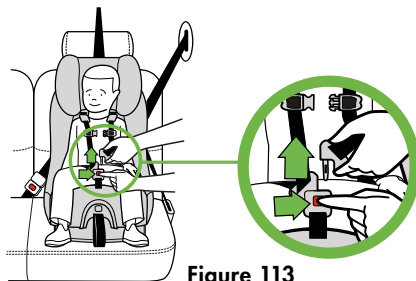


Figure 113

### Step 3

Loosen the Harness by lifting up on Harness Adjuster Tab and pulling out on Shoulder Harness Straps as shown in **Figure 114**. Remove child's arms from Harness and remove them from car seat.

**NOTE:** To keep the Harness out of the way for easier placement or removal of your child, place the Buckle Tongues between the fabric and the plastic panel on the exterior of the child seat.

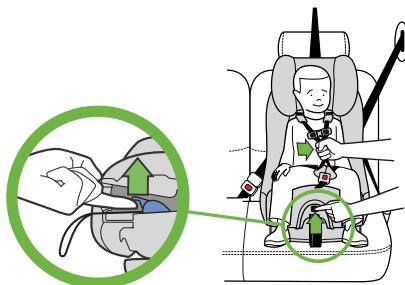


Figure 114

## Operation and Adjustment

### Removing/Installing Seat Cushion

**⚠ WARNING – DEATH or SERIOUS INJURY can occur**

- Never use this car seat without the Seat Cushion in place.

### TO REMOVE SEAT CUSHION

Unfasten the locking tabs at the lower front edge of the seat cushion.

Grasping Seat Cushion at the bottom, front edge, lift and pull forward as shown in **Figure 115**. Once the Seat Cushion releases, pull the Buckle through the Seat Cushion.

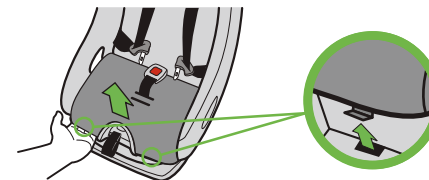


Figure 115

## TO INSTALL SEAT CUSHION

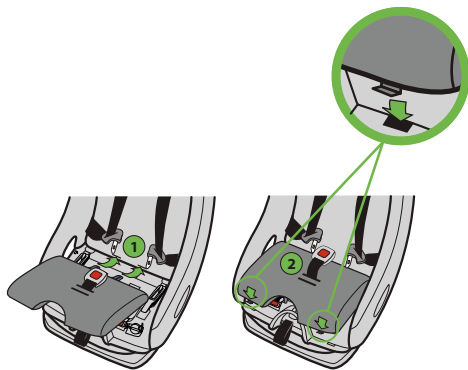
### Step 1

Insert the Buckle through the slot in the Seat Cushion that matches the slot the Crotch Strap is through in the seat.

### Step 2

Insert the tabs on the back of the Seat Cushion through the slots in the pad and into the seat back at the back of the seat bottom.

Push the locking tabs at the lower front of the Seat Cushion into the holes at the front edge of the seat as shown in **Figure 116**.



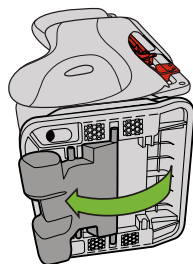
**Figure 116**

## Installing/Removing Anti-Rebound Bar

### TO INSTALL ANTI-REBOUND BAR

#### Step 1

Rotate Recline Foot to Rear-Facing position by pulling on edge of Recline Foot and rotating it forward until it locks in to position, as shown in **Figure 117**.



**Figure 117**

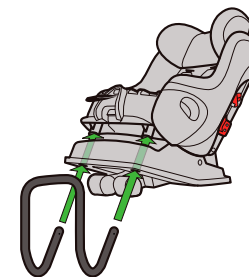
#### Step 2

Remove Seat Cushion, see “Removing/Installing Seat Cushion” on page 72.

Remove UAS Push-on Connectors from their storage location, see “UAS Belt Storage” on page 76.

#### Step 3

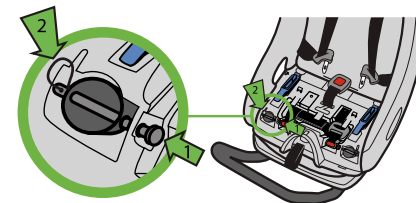
Insert the Anti-Rebound Bar into the holes in the bottom of the seat on each side of the Recline Foot as shown in **Figure 118**.



**Figure 118**

#### Step 4

Hold the Anti-Rebound Bar in place and insert Locking Pins into the holes in the seat and through the Anti-Rebound Bar as shown in **Figure 119**. Check that each Locking Pin is securely installed through both holes in the seat and in the Anti-Rebound Bar and that the Locking Pin Clips are through the Locking Pins.



**Figure 119**

#### Step 5

If installing with vehicle belt, place UAS Push-on Connectors back into their storage location, see “UAS Belt Storage” on page 76.

## TO REMOVE ANTI-REBOUND BAR

### Step 1

Remove the Seat Cushion, see "Removing/Installing Seat Cushion" on page 72.

If UAS Push-on Connectors are stored, remove them from their storage location, see "UAS Belt Storage" on page 76.

### Step 2

Remove the Locking Pins and Locking Pin Clips from the seat as shown in **Figure 120**. Remove the Anti-Rebound Bar from the seat.

**NOTE:** Keep Locking Pins and Locking Pin Clips with Anti-Rebound Bar for storage.

### Step 3

Place UAS Push-on Connectors back into their storage location, see "UAS Belt Storage" on page 76.

Install the Seat Cushion, see "Removing/Installing Seat Cushion" on page 72.

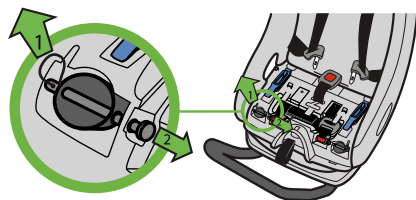


Figure 120

## UAS Belt Storage

### REMOVAL OF UAS BELT FROM STORAGE

#### Step 1

Remove the Seat Cushion, see "Removing/Installing Seat Cushion" on page 72.

#### Step 2

Remove the UAS Adjuster (1) and Belt (2) from their storage position in the seat bottom shown in **Figure 121**.

#### Step 3

Push and hold red release button on UAS Push-on Connectors and pull out as shown in **Figure 122**.

### STORAGE OF UAS BELT

#### Step 1

Remove the Seat Cushion, see "Removing/Installing Seat Cushion" on page 72.

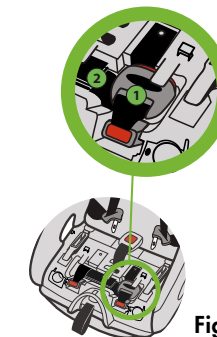


Figure 121

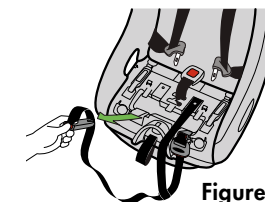


Figure 122



## Step 2

Place UAS Push-on Connectors in seating area by inserting through Rear-Facing Belt Path.

## Step 3

Insert the UAS Push-on Connectors, with the slots in the end oriented toward the outside of the seat, into the openings at the front of the seat bottom. As shown in **Figure 123**.

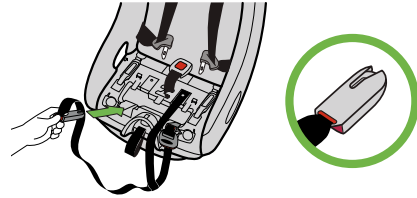


Figure 123

## Step 4

Insert the UAS Adjuster (1) into the square recesses behind the UAS Push-on Connector, fold the excess UAS Belt (2) and insert under tab between adjusters as shown in **Figure 124**.

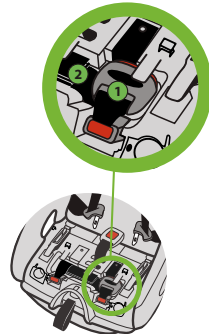


Figure 124

## Step 5

Install the Seat Cushion, see "Removing/Installing Seat Cushion" on page 72.

## Top Tether Storage

**Removal:** Remove Instruction Manual and Tether Belt from back of seat. Pull in and hold retention spring on Tether Hook, then remove hook from storage bar as shown in **Figure 125**, then replace Instruction Manual.

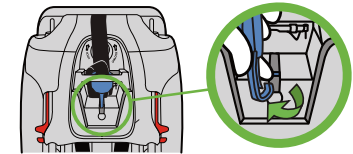


Figure 125

**Storage:** Remove Instruction Manual from back of seat. Hook Tether Hook around storage bar as shown in **Figure 126**, fold Top Tether belt and insert into Tether Storage. Replace Instruction Manual.

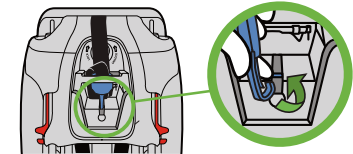


Figure 126

## Instruction Manual Storage

After carefully reading and following these instructions, keep this manual for future use and store in the compartment located in Shoulder Harness Access Panel, as shown in **Figure 127**.

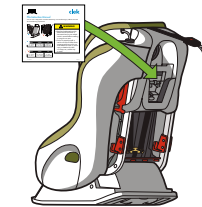


Figure 127

## Aircraft Installation

Clek strongly recommends that children are secured in their child seat during airline travel.

### FORWARD-FACING

To install this seat in an aircraft forward-facing, follow the instructions for installing the seat with a lap belt in the “Installing Forward-Facing Car Seat With Vehicle Belt” on page 59.

**IMPORTANT:** Aircraft are not equipped with top tether anchors. The Top Tether should be stored in the back of the car seat and not used on an aircraft, see “Top Tether Storage” on page 78.

### REAR-FACING

To install this seat in an aircraft rear-facing, follow the instructions for installing the seat with a lap belt in the “Installing Rear-Facing Car Seat With Vehicle Belt” on page 41.

**NOTE:** If it is necessary to check your seat, it must be packed in a Clek Weelee Travel Bag (sold separately). Damage may result from checking your seat without proper packaging.

## Care and Cleaning

### Removing / Installing Shoulder Harness Covers

The Shoulder Harness Covers included with this seat are optional.

Shoulder Harness Straps must be unthreaded in order to remove (or install) the Shoulder Harness Covers, and then rethreaded into the proper Shoulder Harness Slots. See “Shoulder Harness Adjustment” section on pages 19 – 24 for instructions on how to unthread and rethread the shoulder harness straps.

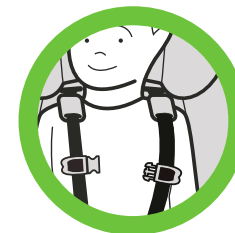


Figure 128



Figure 129

## Removing/Installing Seat Cushion Cover

### TO REMOVE SEAT CUSHION COVER

#### Step 1

Remove the Seat Cushion from the Seat, see "Removing/Installing Seat Cushion" on page 72.

#### Step 2

Turn Seat Cushion over to locate the Seat Cushion Cover attachments, as shown in **Figure 130**.

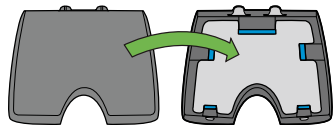


Figure 130

#### Step 3

Using your thumb, push inward on each Seat Cushion Cover attachment one at a time to release the Cover from the Seat Cushion, as shown in **Figure 131**.

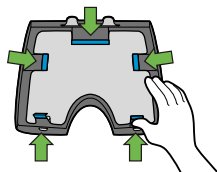


Figure 131

#### Step 4

Remove Seat Cushion Cover from Seat Cushion, as shown in **Figure 132**.

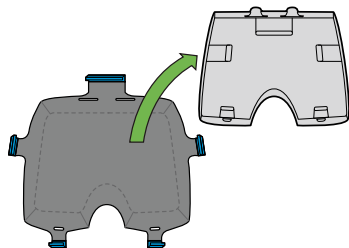


Figure 132

### TO INSTALL SEAT CUSHION COVER

#### Step 1

Place Seat Cushion Cover on a flat surface with Seat Cushion Cover attachments facing up, as shown in **Figure 133**.

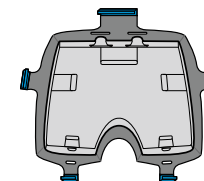


Figure 133

#### Step 2

Place Seat Cushion onto Seat Cushion Cover, aligning the Seat Cushion with the Seat Cushion Cover attachments.

#### Step 3

Reattach Seat Cushion Cover attachments to Seat Cushion by wrapping the Seat Cushion Cover sides around the entire Seat Cushion, as shown in **Figure 134**.

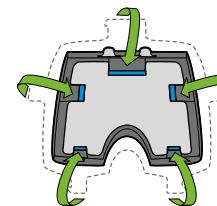


Figure 134

### SEAT BACK COVER REMOVAL/ INSTALLATION

Removal of the seat back cover is not recommended unless necessary due to heavy soiling which cannot be removed by surface washing. For instructions on removal and installation of the seat back cover go to <http://www.clekinc.ca/support/flo>

## Car Seat Cleaning

### FABRIC CARE INSTRUCTIONS

#### Step 1

If the spot has dried, try lightly brushing or scraping off the residue. Wipe surface with water.

#### Step 2

If a spot still remains, apply a mild detergent to fabric with a light mist.

#### Step 3

Work area using soft brush or edge of spoon from outside of spot towards the middle.

#### Step 4

Allow solution to work for approximately one minute.

#### Step 5

Remove with clean water or blot with clean soft towel.

#### Step 6

Repeat steps 3-5 as necessary until spot is removed.

#### Step 7

Rinse with clear lukewarm water and blot with clean soft white cloth as final step.

### SEAT FRAME (EXTERIOR PLASTICS ONLY) WASHING INSTRUCTIONS

Use a soft cloth with warm water and soap. Apply light pressure with cloth in small circular motions.

Do NOT remove the labels from this car seat. They are meant to be permanent so they can remind you and others of important information. Removal will mar the finish of the seat.

### HARNESS CARE INSTRUCTIONS

Surface clean straps with a damp cloth using warm water and a mild detergent.

## BUCKLE WASHING INSTRUCTIONS

Buckle may be rinsed under warm water. Do not use detergents or lubricants.

## Recycling Your Seat

For instructions on how to recycle your Clek Fflo child seat, please visit <http://www.clekinc.ca/recycle/>

## Troubleshooting

For instructions on troubleshooting your Clek Fflo child seat, please visit <http://www.clekinc.ca/support/flo>

## Accessories

Optional accessories for this product may be purchased at: <http://www.shopclek.ca>

## Warranty

### LIMITED WARRANTY

Clek Inc. warrants, only to the original consumer purchaser and only if this product was purchased (new and unused in an unopened box) from an authorized Clek retailer listed at [www.clekinc.ca](http://www.clekinc.ca), that this product will be free from defects in material and workmanship for one (1) year from the date of original purchase (the "Warranty Period"). During the Warranty Period, Clek Inc. will, at its option, repair or replace this product if it is found by the manufacturer to be defective in material or workmanship. Clek Inc. reserves the right to discontinue or change parts, fabrics, models, or products, or to substitute this product with a comparable model or product. To make a claim under this warranty, please contact us at [http://www.clekinc.ca/contact\\_us/](http://www.clekinc.ca/contact_us/), call us at 1-866-656-2462, or write to us at Clek Inc., Attn: Customer Service, Clek Inc., 226 Lesmill Rd., Toronto, Ontario, Canada M3B 2T5. An original receipt is required to validate your warranty and shipping charges will be the responsibility of the original consumer purchaser. To expedite the processing of any future warranty claims and to verify the original date of purchase, please complete and mail the pre-addressed owner registration card within thirty (30) days of purchase.

## **WARRANTY LIMITATIONS**

This warranty does not cover the effects of normal wear and tear or damage resulting from negligence, modification, improper installation, accidents, misuse or abuse of this product. It is expressly agreed that the obligations of Clek Inc. and the original consumer purchaser's remedies under the limited warranty contained herein are exclusive and are strictly limited to the repair or replacement of the product. This limited warranty is conditional upon strict compliance with the provisions of the Instruction Manual. In no event will Clek Inc. or the dealer selling this product be liable to you for any damages, including incidental or consequential damages, arising out of the use or inability to use this product.

## **LIMITATION OF WARRANTIES AND STATE/PROVINCIAL LAW RIGHTS**

The warranty and remedies as set forth above are exclusive and in lieu of all others, oral or written, express or implied. To the extent permitted by applicable law, any implied warranties, including implied warranties of merchantability and fitness for a particular purpose, are hereby disclaimed. Some states/provinces DO NOT allow limitations as to how long an implied warranty lasts or the exclusion or limitation of incidental or consequential damages, so the above limitations may not apply to you. This warranty gives you specific legal rights, and you may have other rights, which vary from state/province to state/province. Neither Clek Inc. nor the dealer selling this product has authorized any person to create for it any other warranty, obligation, or liability in connection with this product.