



FL20USD4



Flo Instruction Manual

This car seat is designed for use either Rear-Facing or Forward-Facing by children who meet all of the following requirements:



HEIGHT	WEIGHT	AGE
25 – 43 in. 64 – 110 cm	14 – 50 lb 6.4 – 22.7 kg	Able to sit upright alone



HEIGHT	WEIGHT	AGE
30 – 49 in. 76 – 124 cm	22 – 65 lb 10 – 29.5 kg	2+ years recommended (min. 1 year)



WARNING

- Read and understand all information and instructions on product labels and in this manual and in your vehicle owner’s manual before installing or using this car seat.
- Failure to properly install or use this car seat or follow these warnings and those on this car seat’s labels can result in serious injury or death to the child in a sharp turn, sudden stop or crash.

Checklist for Proper Use

IMPORTANT: This is only a checklist — you must read and understand all of the warnings and instructions on this car seat’s labels and in this manual before installing or using this car seat.



When Using This Car Seat in Rear-Facing Mode

- ✓ Child weighs between 14 and 50 lb (6.4 and 22.7 kg), height is between 25 and 43 in. (64 and 110 cm) and able to sit upright alone.
- ✓ Car seat is securely installed in a vehicle rear seat.
 - If car seat must be installed in a front seat, the front air bag for that position is deactivated and the vehicle owner’s manual states that this is an acceptable position to install a Rear-Facing child restraint.
- ✓ LATCH belt or vehicle belt is correctly routed under Seat Cushion in the Rear-Facing Belt Path and there is no slack in the LATCH Belt or the vehicle belt.
 - If child weighs more than 35 lb (15.9 kg), this car seat must be installed with a vehicle belt.
- ✓ Recline Foot is in the Rear-Facing position and Car Seat is reclined so that the Rear-Facing reference line appropriate for the child’s weight is parallel to the ground.
- ✓ The top of the child’s head is at least 1 in. (2.5 cm) below the top of the car seat Headrest.
- ✓ Shoulder Harness Straps **MUST** be through Shoulder Harness Slots closest to and at or below the shoulder of the child.
- ✓ Bottom of Headrest is at or above the Shoulder Harness Slots in use.
- ✓ Crotch Strap is through inner Crotch Strap Slot.
- ✓ Harness is buckled and snugly adjusted on child.



When Using This Car Seat in Forward-Facing Mode

- ✓ Child weighs between 22 and 65 lb (10 and 29.5 kg), height is between 30 and 49 in. (76 to 124 cm) and is at least 1 year of age.
- ✓ Car seat is securely installed in a vehicle rear seat without the Anti-Rebound Bar.
 - If car seat must be installed in a front seat, the front air bag for that position is deactivated, check the vehicle owner's manual for proper use of a child restraint in that position.
- ✓ Car seat is correctly attached to the vehicle using either the LATCH Belt and Top Tether, or the vehicle belt and Top Tether.
 - If child weighs more than 40 lb (18.1 kg), this car seat must be installed with the Vehicle Belt and the Top Tether.
- ✓ Recline Foot is in the Forward-Facing position.
- ✓ The top of the child's ears are at or below the top of the car seat Headrest.
- ✓ Shoulder Harness Straps **MUST** be through Shoulder Harness Slots closest to and at or above shoulders of child.
- ✓ Bottom of Headrest is at or above the Shoulder Harness Slots in use.
- ✓ Crotch Strap is through outer Crotch Strap Slot and adjusted to the longer length.
- ✓ Harness is buckled and snugly adjusted on child.

For concerns related to parts or the use and maintenance of this product, please contact us at:

Clek Inc.
Attn: Customer Service
226 Lesmill Rd.
Toronto, Ontario
Canada M3B 2T5
1-866-656-2462
www.clekinc.com

Table of Contents

Checklist for Proper Use	i
When Using This Car Seat in Rear-Facing Mode	i
When Using This Car Seat in Forward-Facing Mode	ii
Car Seat Features	3
Registration & Recall Information	5
Registering Your Car Seat	6
Warnings	7
Certification	12
Size & Age Limitations	12
AAP Recommendations	13
When Using This Car Seat in Rear-Facing Mode	13
When Using This Car Seat in Forward-Facing Mode	15
Adjusting Car Seat to Fit Your Child	16
Installing Headrest	16
Adjusting Headrest	18
Crotch Strap Adjustment	19
Shoulder Harness Adjustment	21
Shoulder Harness Slot Selection	22
Shoulder Harness Unthreading	22
Shoulder Harness Rethreading	24
Vehicle Information	27
Vehicle Child Restraint Anchorage System (LATCH)	27
Vehicle Seat Location Requirements	28
Vehicle Belt Requirements	30
Vehicle Belt Systems	31

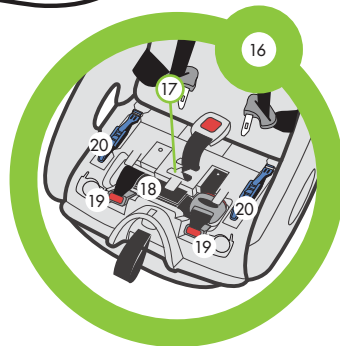
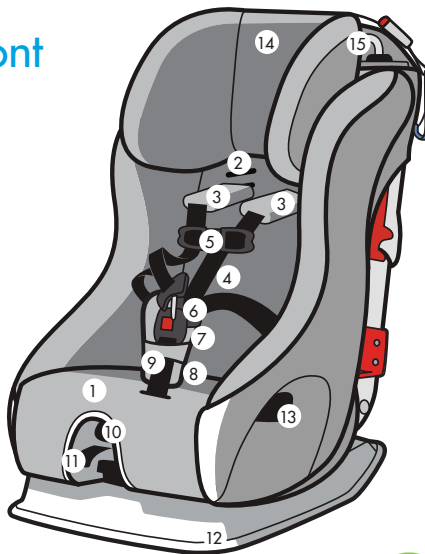
® Clek and Fillo are registered trademarks of Clek Inc.

For a complete list of Clek Inc. trademarks please visit www.clekinc.com/trademarks

Installing/Removing Rear-Facing Car Seat	34
Installing Rear-Facing Car Seat With LATCH	36
Removing Rear-Facing Car Seat Installed With LATCH	43
Installing Rear-Facing Car Seat With Vehicle Belt	45
Removing Rear-Facing Car Seat Installed With Vehicle Belt	51
Installing/Removing Forward-Facing Car Seat	52
Installing Forward-Facing Car Seat With LATCH	54
Removing Forward-Facing Car Seat Installed With LATCH	60
Installing Forward-Facing Car Seat With Vehicle Belt	62
Removing Forward-Facing Car Seat Installed With Vehicle Belt	68
Securing Your Child in Car Seat	70
Removing Your Child From Car Seat	76
Operation and Adjustments	77
Removing/Installing Seat Cushion	77
Installing/Removing Anti-Rebound Bar	78
LATCH Belt Storage	81
Top Tether Storage	83
Instruction Manual Storage	83
Aircraft Installation	84
Care and Cleaning	85
Removing/Installing Seat Cushion Cover	85
Car Seat Cleaning	87
Recycling Your Car Seat	89
Troubleshooting	89
Accessories	89
Warranty	90
How to Receive Spanish Instructions	92
Cómo recibir las instrucciones en español	92

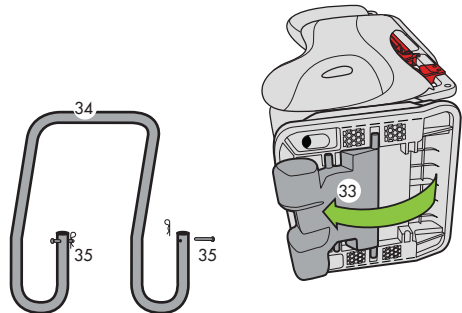
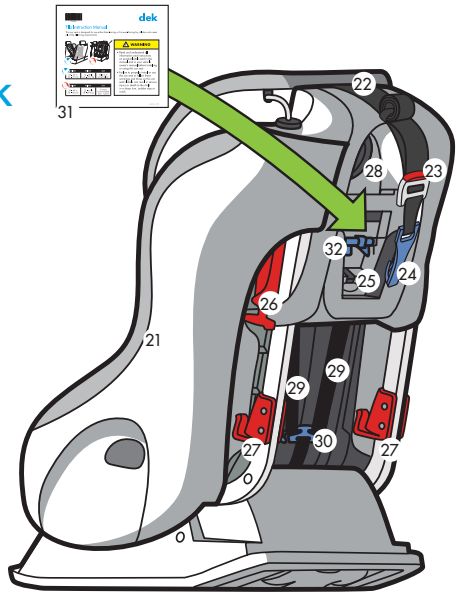
Car Seat Features – Front

- 1 Seat Cushion
- 2 Shoulder Harness Slots
- 3 Shoulder Harness Covers
- 4 Shoulder Harness Straps
- 5 Chest Clip
- 6 Buckle Tongues
- 7 Buckle
- 8 Crotch Strap
- 9 Buckle Pad
- 10 Harness Adjuster
- 11 Harness Adjuster Strap
- 12 Seat Base
- 13 Rear-Facing Belt Path
- 14 Headrest
- 15 Headrest Adjuster
- 16 LATCH Belt Storage (under Seat Cushion)
- 17 Crotch Strap Slots
- 18 LATCH Belt
- 19 LATCH Connectors
- 20 Rear-Facing Belt Lock-offs



Car Seat Features – Back

- 21 Seat
- 22 Top Tether
- 23 Tether Adjuster
- 24 Tether Hook
- 25 Tether Storage (behind manual)
- 26 Forward-Facing Shoulder Belt Lock-offs
- 27 Forward-Facing Belt Guides
- 28 Shoulder Harness Access Panel
- 29 Shoulder Harness Straps
- 30 Metal Harness Plate
- 31 Instruction Manual (stored in Shoulder Harness Access Panel)
- 32 Troubleshooting Tool
- 33 Recline Foot
(Shown in Rear-Facing Position)
- 34 Anti-Rebound Bar
- 35 Anti-Rebound Bar Locking Pins and Locking Pin Clips



Registration & Recall Information



WARNING

- Child restraints could be recalled for safety reasons. You must register this restraint (car seat) to be reached in a recall.

Model Name: **FLLO** _____

Serial Number: _____

Manufactured In: _____
(yyyy/mm/dd)

Date of Purchase: _____

Registering Your Car Seat

Please fill in the information on the previous page for your records. The model name, serial number and manufacturing date can be found on a label affixed to the back of this Car Seat.

Fill out the prepaid registration postcard attached to the car seat and mail it today.

Child restraints could be recalled for safety reasons. You must register this restraint to be reached in a recall. Send your name, address, e-mail address if available, and the restraint's model number and manufacturing date to:

Clek Inc.
226 Lesmill Rd.
Toronto, Ontario, Canada M3B 2T5

or call 1-866-656-2462

or register online at: www.clekinc.com/register

For recall information, call the U.S. Government's Vehicle Safety Hotline at 1-888-327-4236 (TTY: 1-800-424-9153), or go to: <http://www.NHTSA.gov>

Warnings



WARNING – DEATH or SERIOUS INJURY can occur

Failure to properly install or use this car seat or follow these warnings and instructions and those on this car seat's labels can result in serious injury or death of the child in a sharp turn, sudden stop or crash.

- Do not install or use this car seat until you read and understand the instructions in this manual and in your vehicle owner's manual. Do not let others install or use this car seat unless they understand how to correctly install and use it.
- NEVER use this car seat Rear-Facing in a vehicle front seating location with an air bag.
- Use only with children who weigh between 14 and 65 lb (6.4 – 29.5 kg) and whose height is 49 in. (124 cm) or less and who are capable of sitting upright alone.
- Use only in a Rear-Facing position when using this car seat with an infant less than one year old and weighing less than 22 lb (10 kg).
- Failure to choose the correct car seat mode (Rear-Facing or Forward-Facing) and to properly secure this car seat and your child can increase the risk of injury or death.



WARNING – DEATH or SERIOUS INJURY can occur (continued)

- NEVER use this car seat with children not able to sit upright alone. Their head may fall forward, which could restrict their ability to breathe.
- Discontinue Rear-Facing use when:
 - Child’s weight exceeds 50 lb (22.7 kg).
 - Child’s height exceeds 43 in. (110 cm).
 - Child’s head is less than 1 in. (2.5 cm) from the top of the car seat’s Headrest in its highest adjustment position.
- Discontinue Forward-Facing use when:
 - Child’s weight exceeds 65 lb (29.5 kg).
 - Child’s shoulders are above the top Shoulder Harness Slots.
 - Top of child’s ears are above the top of the car seat’s Headrest in its highest adjustment position.
- This car seat must be installed by an adult.
- NEVER allow the child to buckle themselves in this car seat.
- Snugly adjust Harness provided with this car seat around child.
- NEVER use this car seat without the Headrest.
- Do not use this car seat with motorized or door mounted belt systems.



WARNING – DEATH or SERIOUS INJURY can occur (continued)

- Secure this car seat with the vehicle's child restraint anchorage system if available or with a vehicle belt as shown in this instruction manual.
- LATCH Belt or vehicle belt must stay tightly adjusted on car seat at all times.
- When using this car seat in Rear-Facing mode with a child weighing more than 35 lb (15.9 kg), this car seat must be installed with a vehicle belt.
- When using this car seat in Forward-Facing mode with a child weighing more than 40 lb (18.1 kg), this car seat must be installed with a vehicle belt.
- ALWAYS secure the Top Tether provided with this car seat when installing Forward-Facing with the LATCH Belt or a lap belt. NEVER use this car seat, when installing Forward-Facing with the LATCH Belt or a lap belt, without the Top Tether.
- ALWAYS secure the Top Tether provided with this car seat when installing Forward-Facing with lap/shoulder belt unless no Top Tether anchorage is available.
- Do not use this car seat after a crash of any kind. A crash can cause damage to this car seat that you cannot see.



WARNING – DEATH or SERIOUS INJURY can occur (continued)

- ALWAYS securely attach this car seat to the vehicle, even when not occupied. An unsecured car seat can injure other occupants in a crash.
- NEVER leave child unattended.
- NEVER leave child in car seat when Harness is not buckled and properly adjusted, children can strangle on loose Harness straps.
- Do not use this car seat after nine (9) years from the date of manufacture. The date of manufacture can be found on the label affixed to the back of this car seat's base.
- Do not use accessories or parts with this car seat other than those provided by Clek Inc. Use of accessories or parts from other manufacturers could alter the performance of this car seat.
- Do not attempt to make repairs to or otherwise modify or tamper with this car seat.
- NEVER use this car seat if it is damaged or is missing parts.
- Keep this manual in the storage compartment located on the back of this car seat for future use.



**WARNING – DEATH or
SERIOUS INJURY can occur (continued)**

- NEVER use a second-hand car seat or a car seat whose history you do not know.
- Register your child restraint with Clek Inc.
- Avoid burn injury – ALWAYS touch the surfaces that will contact your child first before putting them in this car seat. This car seat can become very hot if left in the sun and can burn your child's skin.

Certification

- This child restraint system conforms to all applicable Federal Motor Vehicle Safety Standards.
- This restraint is certified for use in Motor Vehicles and Aircraft.

Size & Age Limitations



WARNING

- Use only in a Rear-Facing position when using this car seat with an infant less than one year old and weighing less than 22 lb (10 kg).
- Failure to choose the correct car seat mode (Rear-Facing or Forward-Facing) and to properly secure this seat and your child can increase the risk of injury or death.
- NEVER use this seat with children not able to sit upright alone. Their head may fall forward, which could restrict their ability to breathe.

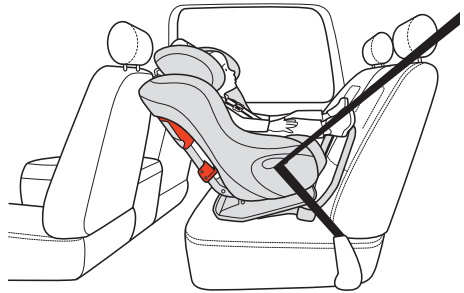
American Academy of Pediatrics (AAP) Recommendation

The AAP advises parents to keep their toddlers in Rear-Facing car seats until age 2, or until they reach the maximum height and weight for their seat.



When Using This Car Seat in Rear-Facing Mode

- All infants less than one year old or 22 lb (10 kg) **MUST** be Rear-Facing.
- Child's weight is between 14 and 50 lb (6.4 and 22.7 kg), **AND**
- Child's height is between 25 and 43 in. (64 and 110 cm), **AND**
- Child is able to sit upright alone, **AND**
- If child weighs more than 35 lb (15.9 kg), this car seat must be installed with the vehicle belt.



- The top of the child's head must be at least 1 in. (2.5 cm) below the top of the car seat's Headrest, as shown in **Figure 1**. If the top of the child's head is less than 1 in. (2.5 cm) below the top of the Headrest in the highest adjustment position, your child is too large for using this car seat Rear-Facing and must be transitioned to using this car seat Forward-Facing.

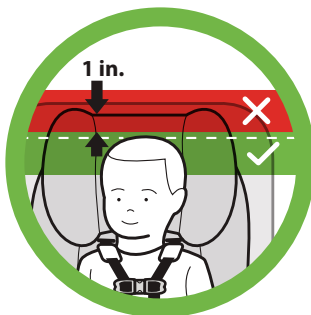


Figure 1

- The Shoulder Harness Straps must be through Shoulder Harness slots at or below and closest to the child's shoulders, as shown in **Figure 2**.
- The Crotch Strap should be through the inner Crotch Strap Slot.

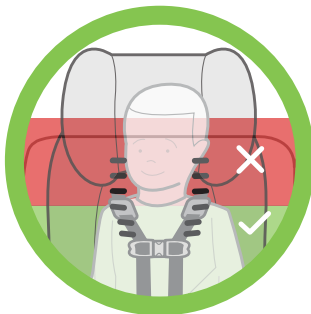


Figure 2



When Using This Car Seat in Forward-Facing Mode

- Child's weight is between 22 and 65 lb (10 and 29.5 kg), AND
- Child's height is between 30 and 49 in. (76 and 124 cm), AND
- Child is at least 1 year of age, AND
- The tops of the child's ears **MUST** be below the top of the car seat's Headrest, as shown in **Figure 3**. If the tops of the child's ears are above the top of this car seat's Headrest in the highest adjustment position, your child is too large for this car seat.
- The Shoulder Harness Straps must be through the Shoulder Harness slots at or above and closest to the child's shoulders, as shown in **Figure 4**.
 - If the child's shoulders are above the highest set of Shoulder Harness Slots in the car seat's seat back, your child is too large for this car seat.
- If child weighs more than 40 lb (18.1 kg), this car seat must be installed with the vehicle belt and Top Tether.

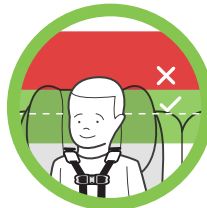
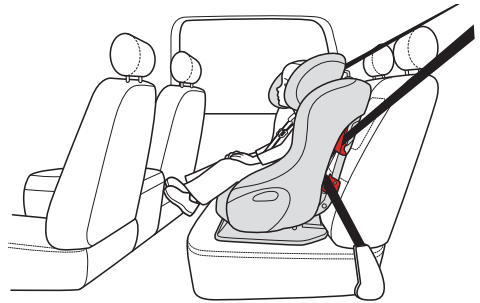


Figure 3

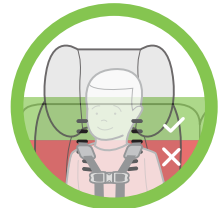


Figure 4

Adjusting Car Seat to Fit Your Child



**WARNING – DEATH or
SERIOUS INJURY can occur**

- NEVER use this car seat without the Headrest.

IMPORTANT: This Car Seat is shipped without the Headrest attached. The Headrest must be installed on the seat prior to use.

Installing Headrest

Step 1

Remove Tether Hook from its storage location on back of car seat. See “Top Tether Storage” on page 83.

Step 2

Locate the Troubleshooting Tool on the Shoulder Harness Access Panel and remove from storage, as shown in **Figure 5**.

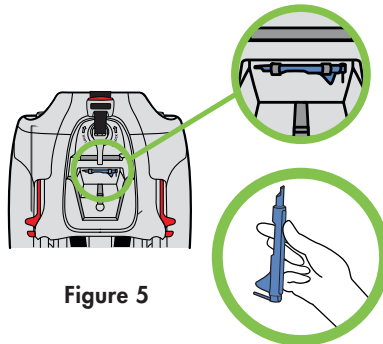


Figure 5

Step 3

Use Troubleshooting Tool to install Headrest:

- From back of car seat, place the Headrest support rods into the Headrest Guides on top of the seat back.
- Place the metal pin located on the end of the Troubleshooting Tool into the pinhole on the Headrest guide located on the right side of the seat (when facing the back of the seat) (1).
- While pressing in on Troubleshooting tool, push Headrest down until the Headrest Support Rods slide down into the seat (2), as shown in **Figure 6a**.

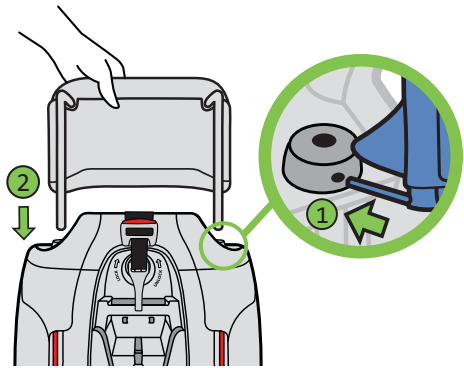


Figure 6a

Step 4

Press the button on the Headrest Adjuster located on the left-hand side of the seat (when facing back of the seat) (1), and push the Headrest down until it locks into place (2), as shown in **Figure 6b**.

Step 5

Store Troubleshooting Tool in storage spot on Shoulder Harness Access Panel.

If installing this car seat Rear-Facing, store the Top Tether. See “Top Tether Storage” on page 83.

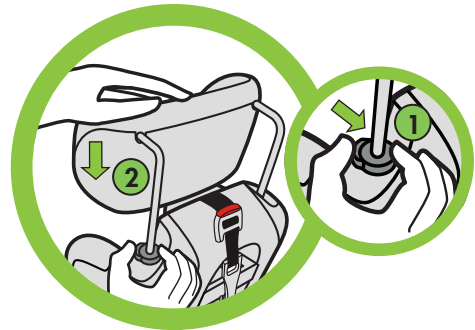


Figure 6b

Adjusting Headrest

Step 1

Press the button on the Headrest Adjuster on the right-hand side of the seat (when facing front of seat) (1) and raise or lower the Headrest into the desired position (2) as shown in **Figure 7**.

Step 2

Check for proper adjustment of Headrest.

The bottom of the Headrest must ALWAYS be at or above the Shoulder Harness Slots in use.

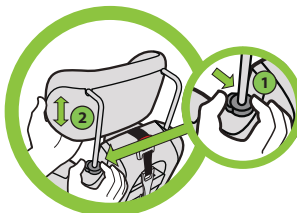


Figure 7



Figure 8

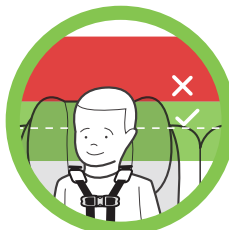


Figure 9



Rear-Facing: The top of the child's head must be at least 1 in. (2.5 cm) below the top of the car seat's Headrest, as shown in **Figure 8**. If the top of the child's head is less than 1 in. (2.5 cm) below the top of the Headrest in the highest adjustment position, your child is too large for using this car seat Rear-Facing and must be transitioned to using this car seat Forward-Facing.



Forward-Facing: The tops of the child's ears **MUST** be below the top of the car seat's Headrest, as shown in **Figure 9**. If the tops of the child's ears are above the top of this car seat's Headrest in the highest adjustment position, your child is too large for this car seat.

Crotch Strap Adjustment

Step 1

Remove the Seat Cushion, see “Removing/Installing Seat Cushion” on page 77.

Step 2

Check position of Crotch Strap:



Rear-Facing: Adjust the Crotch Strap to the inner Crotch Strap Slot as shown in **Figure 10a**.



Forward-Facing: Adjust the Crotch Strap to the outer Crotch Strap Slot and the longer Crotch Strap length, as shown in **Figure 10b**.

TO MOVE THE CROTCH STRAP FROM ONE POSITION TO THE OTHER:

- Slide the belt to one side of the Crotch Strap Slot and push the edge of the belt into the adjustment slot as shown in **Figure 11**.
- Slide the Crotch Strap into the other Crotch Strap Slot as shown in **Figure 12**, ensuring that the red release button on the buckle faces out of the seat as shown in **Figure 13**.

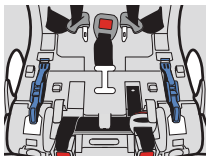


Figure 10a

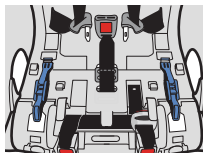


Figure 10b

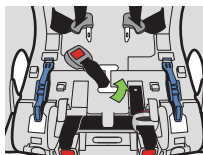


Figure 11

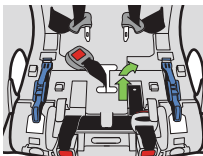


Figure 12

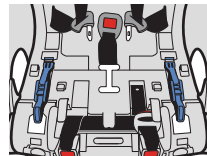


Figure 13

Step 3

TO LENGTHEN (OR SHORTEN) THE CROTCH STRAP

- Slide the belt to one side of the Crotch Strap Slot and push the edge of the belt into the adjustment slot as shown in **Figure 14**.
- Slide the Crotch Strap out of the Crotch Strap Slot as shown in **Figure 15**.
- Select the longer (or shorter) Crotch Strap length and slide the Crotch Strap into the appropriate Crotch Strap Slot as shown in **Figure 16**, ensuring that the red release button on the Buckle faces out of the seat as shown in **Figure 17**.

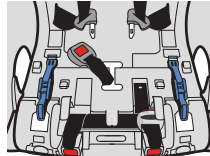


Figure 14

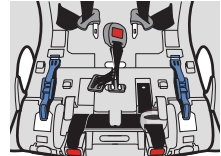


Figure 15

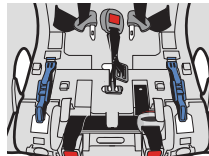


Figure 16

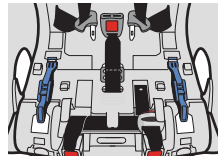


Figure 17

Step 4

Install the Seat Cushion, see “Removing/
Installing Seat Cushion” on page 77.

Shoulder Harness Adjustment



WARNING – DEATH or SERIOUS INJURY can occur

- To prevent ejection in a crash, the loops at the end of the Shoulder Harness Straps must be properly attached to the Metal Harness Plate.
- To prevent loose Harness and risk of ejection in a crash, Harness must be properly routed under bottom of seat back cover.
- To prevent loose Harness and risk of ejection in a crash, the Shoulder Harness Straps must be routed through Shoulder Harness Slots at the same height on each side and in the pad and seat back.

NOTE: This car seat has six (6) harness height positions.

SHOULDER HARNESS SLOT SELECTION

Place child in seat and select the appropriate set of Shoulder Harness Slots for the direction child is facing.



Rear-Facing: Choose the Shoulder Harness Slots at or just below and closest to the shoulders of your child as shown in **Figure 18**.



Forward-Facing: Choose the Shoulder Harness Slots at or just above and closest to the shoulders of your child as shown in **Figure 19**.

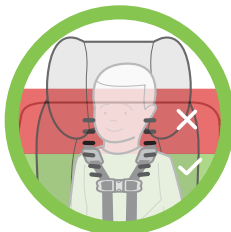


Figure 18

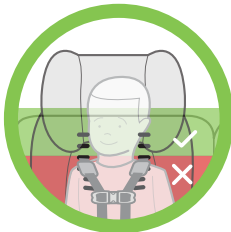


Figure 19

SHOULDER HARNESS UNTHREADING

Step 1

Loosen Harness to largest size:

- While lifting up on Harness Adjuster Tab, pull out on Shoulder Harness Straps until they stop as shown in **Figure 20**.

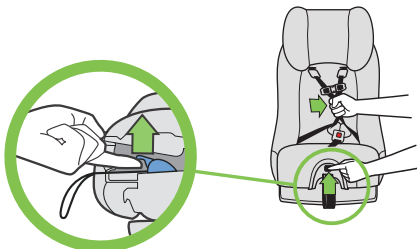


Figure 20

Step 2

Remove Top Tether from storage. See “Top Tether Storage” on page 83.

Step 3

Remove Shoulder Harness Access Panel from back of car seat:

- Twist the Access Panel Lock counter-clockwise and pull to remove as shown in **Figure 21**.

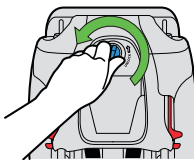


Figure 21

Step 4

Remove loops at ends of Shoulder Harness Straps from Metal Harness Plate by sliding strap out through slot in Metal Harness Plate as shown in **Figure 22**.

Step 5

From front of car seat, pull Shoulder Harness Straps out of seat back.

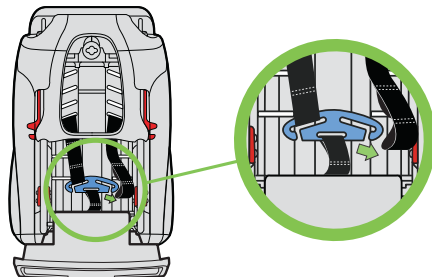


Figure 22

SHOULDER HARNESS RETHREADING

Step 1

Check that Harness Straps are not twisted and from front of seat, insert Shoulder Harness Straps through the chosen Shoulder Harness Slots as shown in **Figure 23**. Straps **MUST** go through the Shoulder Harness Slots at the same height on each side

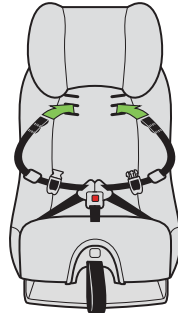


Figure 23

Step 2

Route Shoulder Harness under bottom of seat back cover (1) as shown in **Figure 24**.

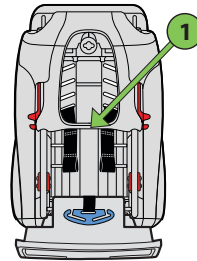


Figure 24

Step 3

Attach the Metal Harness Plate to the loop closer to the end of the Shoulder Harness Strap by sliding Harness Strap into slot in Metal Harness Plate as shown in **Figure 25**.

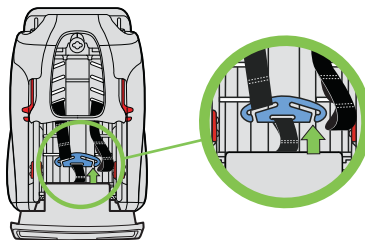


Figure 25

For Infants under 22 lb (only): If you are unable to achieve a snug harness, you may shorten the Shoulder Harness Straps. To make the Harness smaller, attach the Metal Harness Plate to the loop further in from the end of the Shoulder Harness Strap as shown in **Figure 26**.

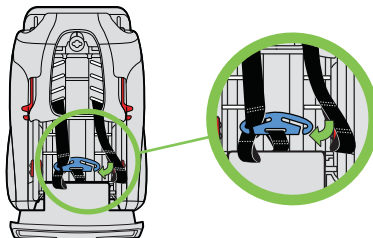


Figure 26

Check that both Shoulder Harness Straps are attached to the Metal Harness Plate on the same loop while ensuring that each Shoulder Harness Strap is completely inside the slot in Metal Harness Plate as shown in **Figure 27**.

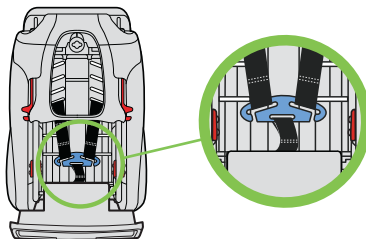


Figure 27

Step 4

Reattach Shoulder Harness Access Panel to back of car seat:

- Align Shoulder Harness Access Panel with opening in Seat Back Cover and snap in to position. Lock Access Panel in place by twisting the Access Panel Lock clockwise, as shown in **Figure 28**.

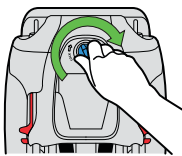


Figure 28

Step 5

If installing this car seat Rear-Facing, store the Top Tether. See “Top Tether Storage” on page 83.

Vehicle Information



Vehicle Child Restraint Anchorage System (LATCH)

- LATCH stands for Lower Anchors and Tethers for Children. This term refers to the anchors built into a vehicle for attaching child restraints and consists of two lower anchors at the crease between the vehicle seat back and vehicle seat cushion and a top tether anchor behind the vehicle seat as shown in **Figure 29**.
- 2003 or newer model year vehicles have at least two seating locations with a LATCH Anchorage System. Some 2001 and 2002 model year vehicles have LATCH Anchorage Systems. 2000 model year vehicles or older DO NOT have LATCH Anchorage Systems. See your vehicle owner's manual if you are unsure if your vehicle is equipped with a LATCH Anchorage System.
- See your vehicle owner's manual for seating positions which can be used with LATCH.
- If not readily visible, the LATCH lower anchors may be noted by a symbol located near the crease between the vehicle seat back and vehicle seat cushion, as shown in **Figure 30**.
- If covered, the top tether anchor locations may be identified by a symbol as shown in **Figure 31**.

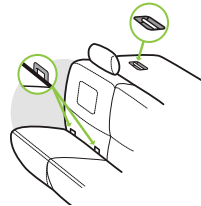


Figure 29



Figure 30



Figure 31

Vehicle Seat Location Requirements



WARNING

- According to accident statistics, children 12 and under are safer when properly restrained in the back seat rather than in the front seat.



- Before using this car seat, reference your vehicle owner's manual for:
 - Car seat installation instructions
 - Information about air bags and car seat use
- For a toddler over one year old and Forward-Facing, if a vehicle front seat location with an air bag must be used, follow the vehicle manufacturer's instructions for child restraint use and move the vehicle seat back as far as possible.

WARNING – DEATH or SERIOUS INJURY can occur

- Do not use this child restraint Rear-Facing in the front seat with an active frontal air bag. Child may be seriously injured or killed when an inflating air bag hits back of child restraint.
- NEVER use this car seat in a front vehicle seat location unless recommended by your vehicle owner's manual.
- Improper placement of this car seat in your vehicle increases the risk of serious injury or death. Some seating positions in your vehicle may not be safe for this car seat. Some vehicles do not have any seating positions that can be used safely with this car seat. If you are not sure where to place this car seat in your vehicle, consult your vehicle owner's manual or call 1-866-656-2462.

 **WARNING / ADVERTENCIA / MISE EN GARDE**

DO NOT place rear-facing child seat on front seat with air bag. DEATH OR SERIOUS INJURY can occur. The back seat is the safest place for children 12 and under.

NO coloque el asiento infantil para el automóvil orientado hacia atrás en el asiento delantero del vehículo que tenga una bolsa inflante de seguridad. El niño podría MORIR O LESARSE GRAVEMENTE. El asiento trasero es el lugar más seguro para los niños de 12 años o menos.



NE PAS placer un siège d'enfant faisant face à l'avant sur le siège avant doté d'un coussin gonflable. LA MORT OU DES BLESSURES GRAVES pourraient s'ensuivre. Le siège arrière est l'emplacement le plus sûr pour les enfants de 12 ans et moins.

- Only install this car seat on vehicle seats that face forward. NEVER install this car seat on vehicle seats facing sideways or backwards, as shown in **Figure 32**.
- Only use this car seat on vehicle seats with seat backs that lock in an upright position. Check that the vehicle seat back is locked in an upright position recommended by the vehicle owner's manual for use when installing a child restraint.



Figure 32

Vehicle Belt Requirements

Design and operation of vehicle belt systems vary from vehicle to vehicle and seating position to seating position within a vehicle. Refer to the vehicle owner's manual for information regarding car seat installation and vehicle belt use with a car seat.



WARNING

- NEVER use this car seat with a vehicle belt that is cut, damaged, frayed or inoperable.
- Using this car seat with a vehicle belt system unsafe for use with this car seat can result in serious injury or death. Pay careful attention to these systems; some of the vehicle belts that are not safe to use look very much like vehicle belts that are safe to use. If you are unsure, consult your vehicle owner's manual or call 1-866-656-2462.
- Not all vehicle belts can be used with a car seat. This car seat must be held tight at all times by the lap belt or lap portion of the lap/shoulder belt.
- This car seat may not be compatible with every inflatable lap-shoulder belt. Contact Clek Customer Service at 1-866-656-2462 for more information.
 - If installing this car seat using LATCH in a seating position equipped with an inflatable vehicle belt, do not buckle the vehicle belt behind this car seat.

Vehicle Belt Systems

- NEVER use a passive restraint — lap or shoulder belt mounted on door, as shown in **Figure 33**.



Figure 33

- NEVER use a passive restraint — lap belt with a motorized shoulder belt, as shown in **Figure 34**.



Figure 34

- Inflatable vehicle belt – lap/shoulder belt with a built-in airbag.

- This car seat may not be compatible with every inflatable lap-shoulder belt. Contact Clek Customer Service at 1-866-656-2462 for more information.

- Buckle/Lap Belt Anchor Forward of Seat Bight – lap belt or lap belt portion of a lap/shoulder belt or buckle comes out of vehicle seat bottom forward of the seat back, as shown in **Figure 35**.

- May not allow for secure installation of this car seat in some cases. Check for movement of car seat after installation. If car seat is not secure, DO NOT use this vehicle belt.

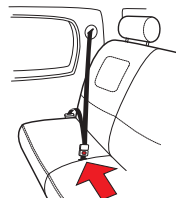


Figure 35

- Retractable Lap Belts – Lap belt is mounted on a retractor which automatically pulls the lap belt back in when released, as shown in **Figure 36**.
 - If this type of lap belt is equipped with an Emergency Locking Retractor (ELR) it should NEVER be used with a car seat.
 - If this type of lap belt is equipped with an Automatic Locking Retractor (ALR), or a Switchable Locking Retractor (SLR), it can be used. See your vehicle owner’s manual for more information on SLR retractor belts. To check if your retractable lap belt is equipped with an ALR retractor:
 1. Pull the belt all the way out until it stops.
 2. Allow the belt to pull back in about 6 in. (15 cm).
 3. Pull out on belt again. If the belt will not pull out again, it is equipped with an ALR retractor.
- Manually Adjustable Lap Belts, see **Figure 37** – Length can be manually adjusted. Does not retract into the vehicle.
 - Most manually adjustable lap belts will allow for secure installation, but if the locking latch plate slides, not allowing for a secure installation, it may be necessary to flip the locking latch plate over to get a secure installation as shown in **Figure 38**.

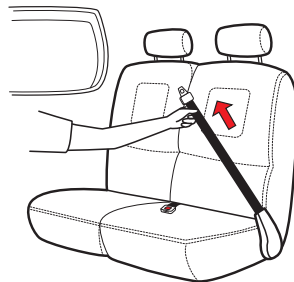


Figure 36

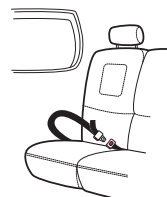


Figure 37



Figure 38

- Lap/Shoulder belts with a sliding latchplate – Shoulder belt is mounted on a retractor which automatically pulls the shoulder belt back in when released as shown in **Figure 39**. Latchplate slides freely along the webbing of the vehicle belt as shown in **Figure 40**.

- If this type of lap/shoulder belt is equipped with an Emergency Locking Retractor (ELR), it may be used.
- If this type of lap/shoulder belt is equipped with an ELR/ALR Switchable Locking Retractor (SLR), it can be used. To check if your lap/shoulder belt is equipped with an SLR:
 1. Slowly pull the shoulder belt all the way out until it stops.
 2. Allow the shoulder belt to pull back in about 6 in. (15 cm).
 3. Pull out on shoulder belt again. If the belt will not pull out again, it is equipped with a SLR

NOTE: Some vehicle vehicle belt systems may have a lap/shoulder belt equipped with a latchplate which appears to hold the lap portion at a fixed length when the belt is pulled tight. This type of lap/shoulder belt is compatible. It may still have a switchable locking retractor (SLR).

See your vehicle owner’s manual for more information on installing a car seat using the vehicle belt.



Figure 39



Figure 40



Installing/Removing Rear-Facing Car Seat



WARNING – DEATH or SERIOUS INJURY can occur

- NEVER use this car seat Rear-Facing in a vehicle front seating location with an air bag.
- LATCH Belt or vehicle belt must be routed through Rear-Facing Belt Path when using car seat Rear-Facing.
- LATCH Belt or vehicle belt must stay tightly adjusted around car seat at all times.
- Failure to properly install or use this car seat increases the risk of serious injury or death to the child and others in a sharp turn, sudden stop or crash.
- Recline Foot must be in the Rear-Facing position when this seat is used Rear-Facing.
- Seat must be installed at the recline angle appropriate for the child's weight when using seat Rear-Facing.
- To avoid injury this car seat must be installed by an adult.



**WARNING – DEATH or
SERIOUS INJURY can occur (continued)**

- NEVER leave this car seat unsecured in your vehicle. This car seat must remain secured even when not in use. In a sharp turn, crash or sudden stop, an unsecured car seat can be thrown around and could severely injure vehicle occupants.
- When installing this child restraint Rear-Facing, it must be secured by the LATCH Belt or vehicle seat belt as shown in this instruction manual.



Installing Rear-Facing Car Seat With LATCH



WARNING – DEATH or SERIOUS INJURY can occur

- Only use the car seat LATCH system in vehicle seating locations designated by the vehicle manufacturer for use with LATCH and that have a standard anchor spacing of 11 in. (280 mm).
- LATCH Connectors must be secured to the vehicle LATCH lower anchors only. Connection to other vehicle anchors or vehicle components could result in the anchor tearing free in a crash.
- NEVER attach more than one LATCH connector to a vehicle lower anchor unless recommended by the vehicle owner's manual for that vehicle.
- Do NOT install by this method for a child weighing over 35 lb (15.9 kg).



LATCH

Note: Use of the Anti-Rebound Bar with this car seat is optional. In some vehicles it may be easier to achieve a secure installation, at the correct recline angle for your child either with or without the Anti-Rebound Bar. The installation process is the same with or without the Anti-Rebound Bar.

Step 1

Prepare car seat for Rear-Facing Installation:

- Rotate Recline Foot to Rear-Facing position by pulling on edge of Recline Foot and rotating it towards the front of the seat until it locks in to position, as shown in **Figure 41**.
- Remove Seat Cushion. See “Installing/Removing Seat Cushion” on page 77.
- If using with Anti-Rebound Bar, install Anti-Rebound Bar. See “Installing/Removing Anti-Rebound Bar” on page 78.

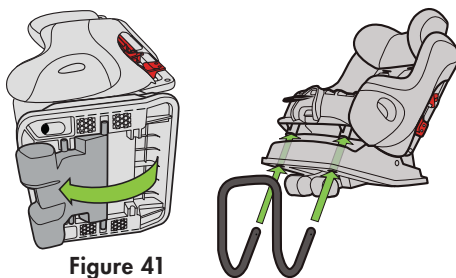


Figure 41

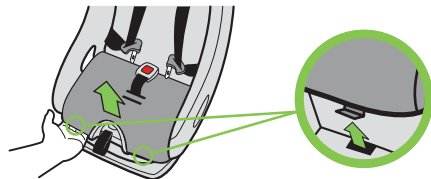
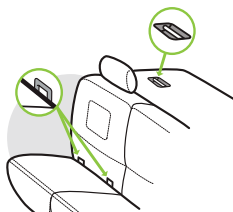


Figure 42

Step 2

Select a Forward-Facing vehicle seating location which has LATCH.

Locate the LATCH lower anchors as shown in **Figure 42**. See “Vehicle Child Restraint Anchorage System (LATCH)” on page 27 in this manual and check your vehicle owner’s manual for further information.



Step 3

If the vehicle seat back is adjustable, make sure the seat back is locked in a more upright position. Refer to vehicle owner's manual for recommended seat back angle. **DO NOT** install or use this car seat while the vehicle seat back is excessively reclined, as shown in **Figure 43**.



Figure 43

Step 4

Open both Rear-Facing Belt Lock-offs, as shown in **Figure 44**.

Check that both the top and bottom portions of each Rear-Facing Lock-off are clear of the Rear-Facing Belt Path.

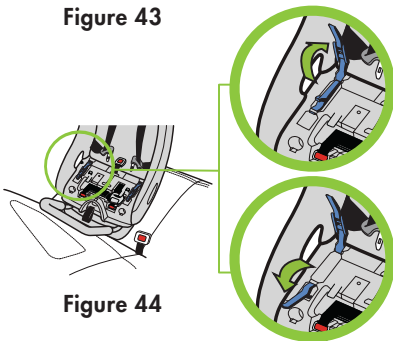


Figure 44

Step 5

Remove LATCH Belt from its storage location under the Seat Cushion, see “LATCH Belt Storage” on page 81.

Lengthen the LATCH Belt by pressing the adjuster release button while pulling belt to extend the length of LATCH Belt as shown in **Figure 45**.

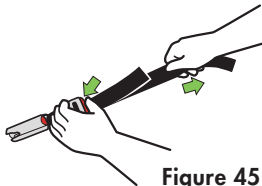


Figure 45

Step 6

Route LATCH Belt through the Rear-Facing Belt Path, taking care that there are no twists in the LATCH Belt, as shown in **Figure 46**. LATCH Belt adjuster must be on the right side of the seat when facing it.

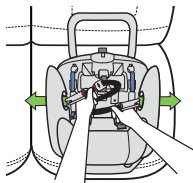


Figure 46

NOTE: Never route the LATCH Belt between the top and bottom portions of the Rear-Facing Lock-offs. Both the top and bottom portion of both Rear-Facing Lock-offs must be opened before routing LATCH belt.

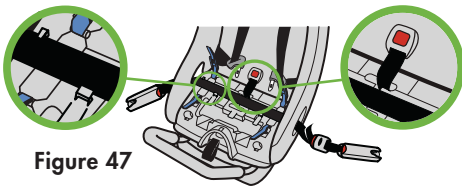


Figure 47

Step 7

Position LATCH Belt under both forward Belt Tabs, as shown in **Figure 47**.

Check that Crotch Strap is not under LATCH Belt.

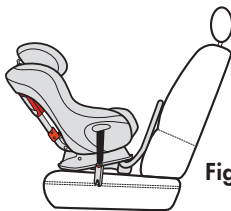


Figure 48

Step 8

Place car seat Rear-Facing in the vehicle seat location selected with Rear-Facing Belt Path toward vehicle seat back and centered between the vehicle LATCH lower anchors as shown in **Figure 48**.

IMPORTANT: Car Seat base must NOT extend beyond the edge of the vehicle seat cushion as shown in **Figure 49**.



Figure 49

Step 9

Position the seat so that the Rear-Facing Level Reference Line appropriate for the child's weight is parallel with the ground as shown in **Figure 50**.

- If using with an infant under 22 lb (10 kg), position the seat with the more reclined Reference Line (top line) parallel to the ground
- If using with an older child who is over 22 lb (10 kg), position the seat with the more upright Reference Line (bottom line) parallel to the ground

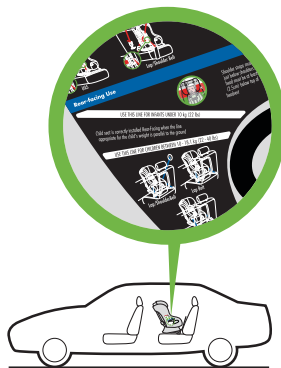


Figure 50

Step 10

Secure LATCH Connectors to the vehicle LATCH lower anchors. For each LATCH Connector:

- Position red release button of LATCH Connector facing away from car seat.
- Align LATCH Connector with the vehicle LATCH lower anchor and press the LATCH Connector against the LATCH lower anchor until you hear the LATCH Connector click, as shown in **Figure 51**.
- Pull on LATCH Connector to check that it is securely locked on the vehicle LATCH lower anchor.

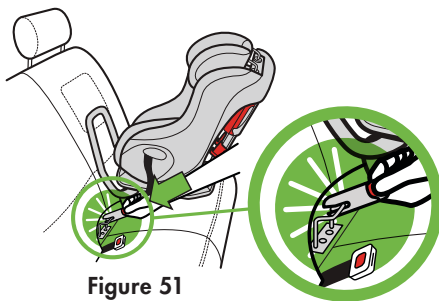


Figure 51

Step 11

Tighten LATCH Belt to secure the car seat.

- Press down in center of car seat to depress the vehicle seat cushion and pull end of LATCH Belt to tighten as shown in **Figure 52**.

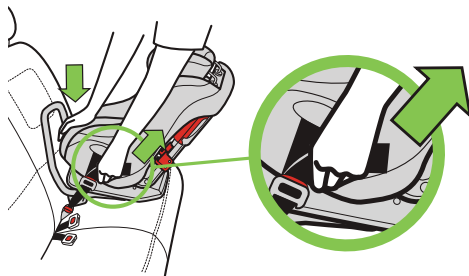


Figure 52

Step 12

Close both Rear-Facing Belt Lock-offs, as shown in **Figure 53**.

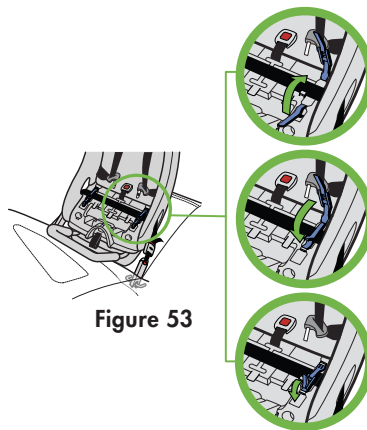


Figure 53

Step 13

Check for secure installation. Gripping car seat at top of armrests, pull car seat front to back and left to right to check for secure installation as shown in **Figure 54**. LATCH Belt MUST stay tight and child restraint should not move more than 1 in. (2.5 cm) in any direction.

- If LATCH Belt does not stay tight or car seat cannot be securely installed, try a different LATCH location or install using the vehicle belt, see “Installing Rear-Facing Car Seat With Vehicle Belt” on page 45.

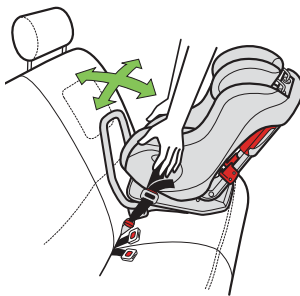


Figure 54

Step 14

Verify that the Rear-Facing Level Reference Line appropriate for the child's weight is parallel to the ground as shown in **Figure 55**.

Step 15

Install Seat Cushion, see “Removing/Installing Seat Cushion” on page 77.

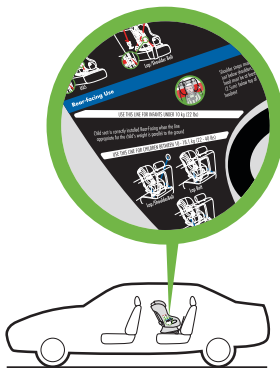


Figure 55



Removing Rear-Facing Car Seat Installed With LATCH

Step 1

Loosen LATCH Belt by pressing the adjuster button on the LATCH Belt adjuster and pulling out on LATCH Belt as shown in **Figure 56**.

- Pressing down in center of car seat to reduce tension on LATCH Belt will make it easier to loosen LATCH Belt.

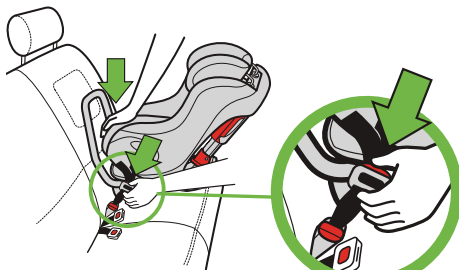


Figure 56

Step 2

Open both Rear-Facing Belt Lock-offs as shown in **Figure 57**.

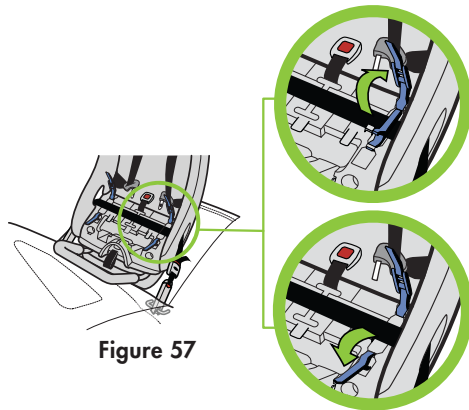


Figure 57

Step 3

Remove LATCH Connectors from vehicle LATCH lower anchors.

- Press and hold red release button while pulling LATCH Connectors as shown in **Figure 58**.
- Repeat to remove LATCH Connector on opposite side.

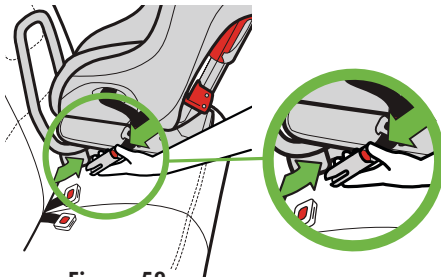


Figure 58

Step 4

Remove this car seat from vehicle.

Step 5

Store the LATCH Belt, see “LATCH Belt Storage” on page 81.



Installing Rear-Facing Car Seat With Vehicle Belt

! WARNING – DEATH or SERIOUS INJURY can occur

- Not all vehicle belts are safe for use with this car seat. Read the “Vehicle Belt Requirements” section in this manual.

Note: Use of the Anti-Rebound Bar with this car seat is optional. In some vehicles it may be easier to achieve a secure installation, at the correct recline angle for your child either with or without the Anti-Rebound Bar. The installation process is the same with or without the Anti-Rebound Bar.

Step 1

Prepare car seat for Rear-Facing Installation:

- Rotate Recline Foot to Rear-Facing position by pulling on edge of Recline Foot and rotating it towards the front of the seat until it locks in to position, as shown in **Figure 59**.
- Remove Seat Cushion. See “Installing/Removing Seat Cushion” on page 77.

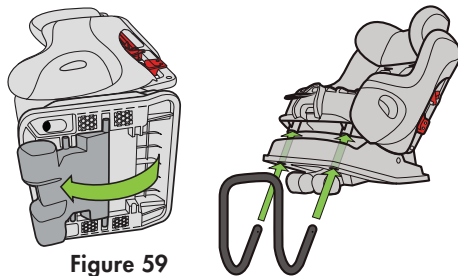
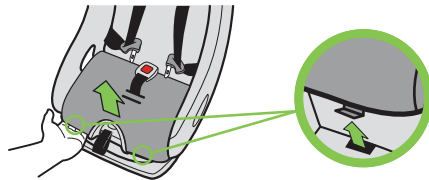


Figure 59



- If using with Anti-Rebound Bar, install Anti-Rebound Bar. See “Installing/Removing Anti-Rebound Bar” on page 78.

Step 2

Select a forward-facing vehicle seating location which has a vehicle belt which can be used with this car seat.

Step 3

If the vehicle seat back is adjustable, make sure the seat back is locked in a more upright position. Refer to vehicle owner’s manual for recommended seat back angle. **DO NOT** install or use this car seat while the vehicle seat back is excessively reclined, as shown in **Figure 60**.

Step 4

Place car seat Rear-Facing in the vehicle seat location selected with Rear-Facing Belt Path toward vehicle seat back and centered in seating position as shown in **Figure 61**.

IMPORTANT: Car Seat base must NOT extend beyond the edge of the vehicle seat cushion as shown in **Figure 62**.



Figure 60

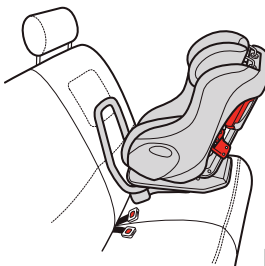


Figure 61

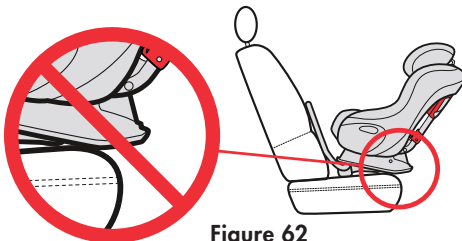


Figure 62

Step 5

Open both Rear-Facing Belt Lock-offs as shown in **Figure 63**.

Check that both the top and bottom portions of each Rear-Facing Lock-off are clear of the Rear-Facing Belt Path.

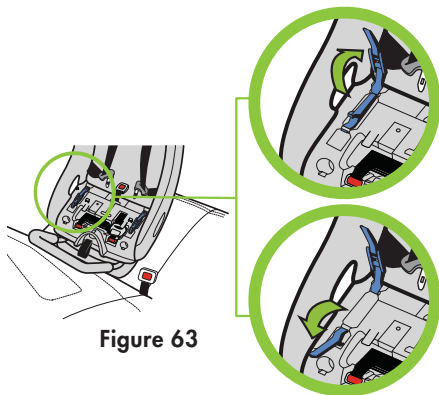


Figure 63

Step 6

Position the seat so that the Rear-Facing Level Reference Line appropriate for the child's weight is parallel with the ground as shown in **Figure 64**.

- If using with an infant under 22 lb (10 kg), position the seat with the more reclined Reference Line (top line) parallel to the ground
- If using with an older child who is over 22 lb (10 kg), position the seat with the more upright Reference Line (bottom line) parallel to the ground

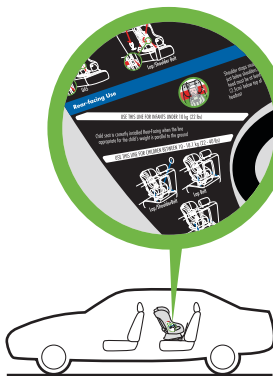


Figure 64

Step 7

Route vehicle belt through the Rear-Facing Belt Path and under both forward Belt Tabs, and buckle vehicle belt, as shown in **Figure 65**.

Check that Crotch Strap is not under the vehicle belt.

NOTE: Never route the vehicle belt between the top and bottom portions of the Rear-Facing Lock-offs. Both the top and bottom portion of both Rear-Facing Lock-offs must be opened before routing vehicle belt.

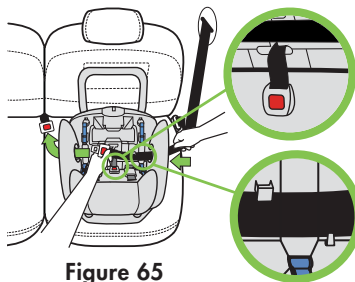


Figure 65

Step 8

Tighten vehicle belt to secure the car seat

- Press down in center of car seat to depress the vehicle cushion and pull the shoulder portion of lap/shoulder belt to tighten as shown in **Figure 66** or the end of the lap belt (for lap-only belt installation) as shown in **Figure 67**.

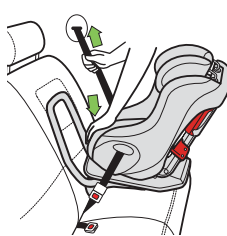


Figure 66

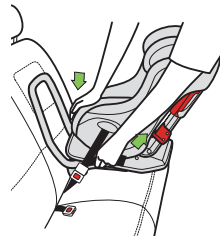


Figure 67

- While holding the vehicle belt tight, close both Rear-Facing Belt Lock-offs as shown in **Figure 68**.

Check that the entire lap/shoulder belt (both the lap and shoulder portions of the belt) or lap belt (for lap-only belt installation) is under both Rear-Facing Belt Lock-offs and under both forward Belt Tabs.

Step 9

Check for secure installation. Gripping car seat at top of armrests, pull car seat front to back and left to right to check for secure installation as shown in **Figure 69**. Vehicle belt **MUST** stay tight and child restraint should not move more than 1 in. (2.5 cm) in any direction.

- If vehicle belt still does not stay tight or car seat cannot be securely installed, try a different vehicle seat location or install using LATCH, see “Installing Rear-Facing Car Seat With LATCH” on page 36.

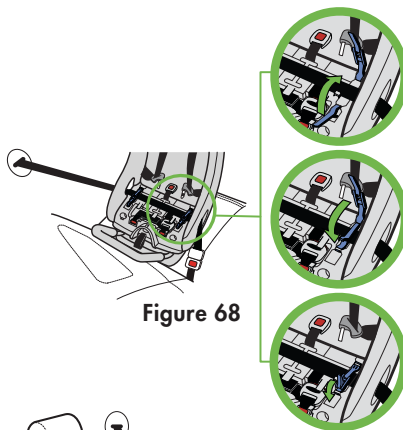


Figure 68

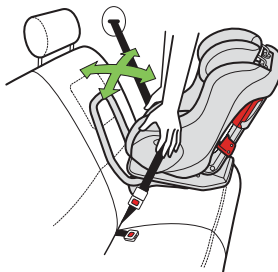


Figure 69

Step 10

Verify that the Rear-Facing Level Reference Line appropriate for the child's weight is parallel to the ground as shown in **Figure 70**.

Step 11

Install Seat Cushion, see “Removing/Installing Seat Cushion” on page 77.

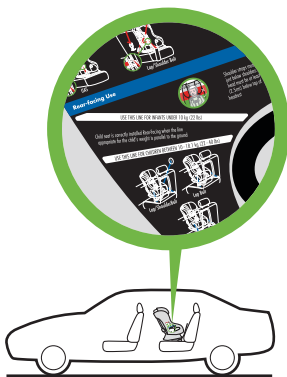


Figure 70



Removing Rear-Facing Car Seat Installed With Vehicle Belt

Step 1

Unbuckle vehicle belt.

- Pressing down in center of car seat to reduce tension on vehicle belt will make it easier to unbuckle vehicle belt as shown in **Figure 71**.

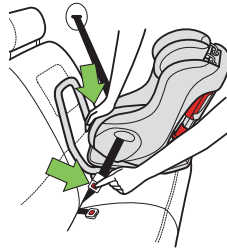


Figure 71

Step 2

Remove Seat Cushion, see “Removing/Installing Seat Cushion” on page 77.

Step 3

Open both Rear-Facing Belt Lock-offs as shown in **Figure 72**.

Remove vehicle belt from Rear-Facing Belt Path.

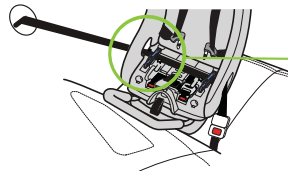
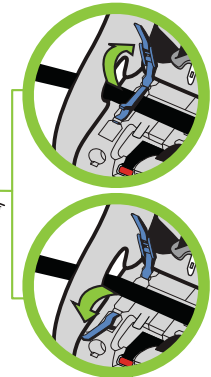


Figure 72



Step 4

Remove this car seat from vehicle.

Step 5

Install Seat Cushion, See “Removing/Installing Seat Cushion” on page 77.



Installing/Removing Forward-Facing Car Seat



WARNING – DEATH or SERIOUS INJURY can occur

- All children less than one year old and 22 lb (10 kg) must use this car seat Rear-Facing. Serious injury or death can result if infant faces front of vehicle.
- Recline Foot must be in the Forward-Facing position when this seat is used Forward-Facing.
- LATCH Belt or vehicle belt must stay tightly adjusted at all times.
- Anti-Rebound Bar (if used,) must be removed when using seat Forward-Facing.
- To avoid injury, this car seat must be installed by an adult.
- Failure to properly install or use this car seat increases the risk of serious injury or death to the child and others in a sharp turn, sudden stop or crash.



**WARNING – DEATH or
SERIOUS INJURY can occur (continued)**

- LATCH Belt or vehicle belt must be routed through Forward-Facing Belt Path and be contained in both red Forward-Facing Belt Guides when using this car seat Forward-Facing.
- NEVER leave this car seat unsecured in your vehicle. This car seat must remain secured even when not in use. In a sharp turn, crash or sudden stop, an unsecured car seat can be thrown around and could severely injure vehicle occupants.



Installing Forward-Facing Car Seat With LATCH



WARNING – DEATH or SERIOUS INJURY can occur

- LATCH Belt must be routed through Forward-Facing Belt Path and be contained in both red Forward-Facing Belt Guides when using this car seat Forward-Facing.
- Only install this car seat using the LATCH system in vehicle seating locations designated by the vehicle manufacturer for use with LATCH and that have a standard anchor spacing of 11 in. (280 mm).
- LATCH connectors must be secured to the vehicle LATCH lower anchors only. Connection to other vehicle anchors or vehicle components could result in the anchor tearing free in a crash.
- NEVER attach more than one LATCH connector to a vehicle lower anchor unless recommended by the vehicle owner's manual for that vehicle.
- ALWAYS secure the Top Tether provided with this car seat when installing Forward-Facing using LATCH. NEVER use this car seat, when installing Forward-Facing with LATCH, without the Top Tether.

**! WARNING – DEATH or
SERIOUS INJURY can occur (continued)**

- Do NOT install by this method for a child weighing more than 40 lb (18.1 kg).



LATCH

Step 1

Prepare car seat for Forward-Facing installation:

- Check that the Recline Foot is in the Forward-Facing position. If needed, grasp forward edge of Recline Foot and rotate towards the back of the seat, pressing it in to the recess in the seat bottom, as shown in **Figure 73**.
- If the Anti-Rebound Bar is attached, remove it now, see "Installing/Removing Anti-Rebound Bar" on page 78.

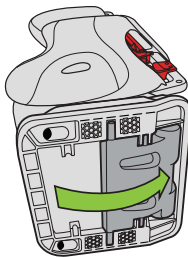


Figure 73

Step 2

Select a Forward-Facing vehicle seating location which has LATCH.

Locate the LATCH lower anchors and tether anchor as shown in **Figure 74**. See “Vehicle Child Restraint Anchorage System (LATCH)” section on page 27 of this manual, and check your vehicle owner’s manual for further information.

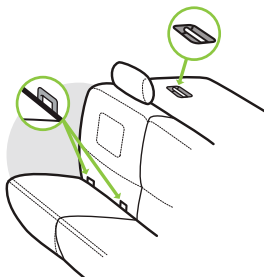


Figure 74

Step 3

If the vehicle seat back is adjustable, make sure the seat back is locked in a more upright position. Refer to vehicle owner’s manual for recommended seat back angle. **DO NOT** install or use this car seat while the vehicle seat back is excessively reclined, as shown in **Figure 75**.



Figure 75

Step 4

Remove Tether Hook from its storage location on back of car seat. See “Top Tether Storage” on page 83.

- Lengthen Top Tether belt by pressing and holding Tether Adjuster while pulling strap as shown in **Figure 76**.
- Place Tether Hook in the seat of the car seat.

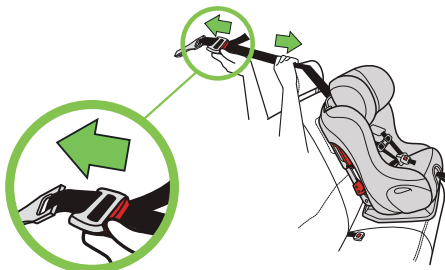


Figure 76

Step 5

If stored, remove LATCH Belt from storage. See “LATCH Belt Storage” on page 81.

- Pull LATCH Belt and Connectors out the right side of the Rear-Facing Belt Path, as shown in **Figure 77**.

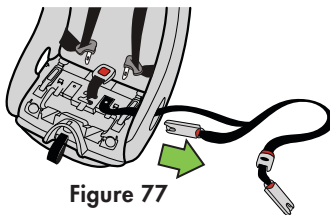


Figure 77

Step 6

Route LATCH Belt through the Forward-Facing Belt Path as follows:

- Holding the LATCH Connector closest to the adjuster, route LATCH Belt through the Forward-Facing Belt Path so that the LATCH Belt passes through both red Forward-Facing Belt Guides, as shown in **Figure 78**.
- Check that the LATCH Belt has no twists in it.

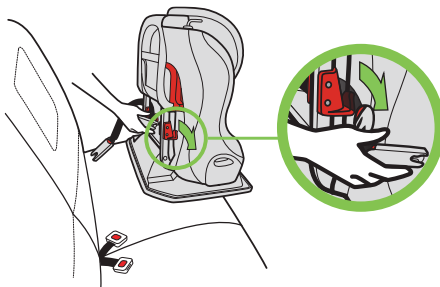


Figure 78

Step 7

Check that the entire LATCH Belt is laying flat, placed correctly through both red Forward-Facing Belt Guides, and NOT between the Harness and seat, as shown in **Figure 79**.

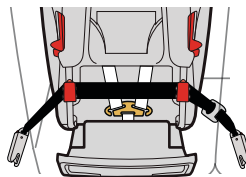


Figure 79

Step 8

Place car seat Forward-Facing in the vehicle seating location selected, and connect each LATCH Connector to each corresponding vehicle LATCH lower anchor. For each LATCH Connector:

- Position red release button of LATCH Connector facing away from car seat.
- Press the LATCH Connector against the LATCH lower anchor until you hear the LATCH Connector click, as shown in **Figure 80**.
- Pull on LATCH Connector to check that it is securely locked on the vehicle LATCH lower anchor.

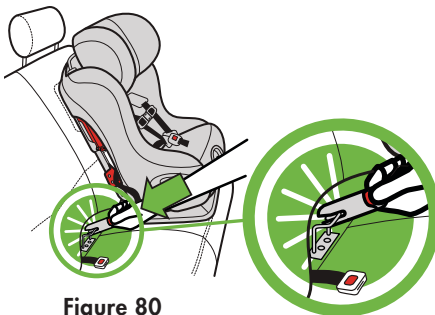


Figure 80

IMPORTANT: Check that there are no twists in the LATCH Belt, and that LATCH Belt is contained in both red Forward-Facing Belt Guides.

Step 9

Position car seat so it is touching the vehicle seat back, and tighten LATCH Belt to secure it.

- Press down in center of car seat to depress the vehicle seat cushion, and pull on the end of the LATCH Belt to tighten as shown in **Figure 81**.

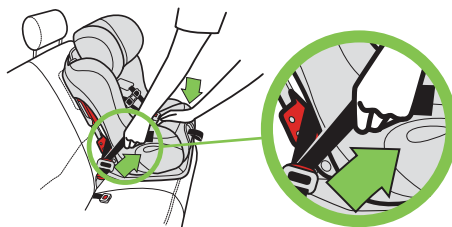


Figure 81

Step 10

Attach Tether Hook to vehicle top tether anchor as shown in **Figure 82** or **83** and pull firmly on free end of strap until Top Tether is snug.

Refer to vehicle owner's manual for recommended Top Tether routing and identification of Top Tether anchor point.



Figure 82

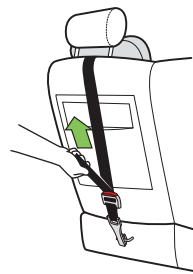


Figure 83

Step 11

Gripping car seat at top of armrests, pull car seat front to back and left to right to check for secure installation as shown in **Figure 84**. LATCH Belt and Top Tether must stay tight and child restraint should not move more than 1 in. (2.5 cm) in any direction.

- If LATCH Belt does not stay tight or car seat cannot be securely installed, try a different LATCH location or install using the vehicle belt, see "Installing Forward-Facing Car Seat With Vehicle Belt" on page 62.

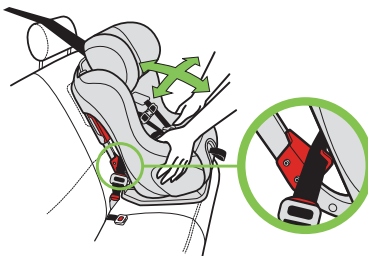


Figure 84



Removing Forward-Facing Car Seat Installed With LATCH

Step 1

Loosen Top Tether belt by pressing and holding Tether Adjuster while pulling strap as shown in **Figure 85**.

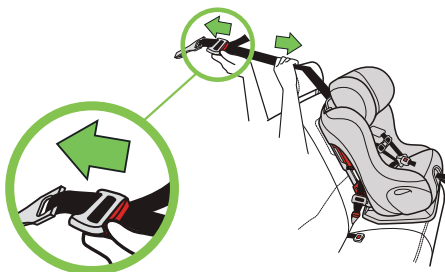


Figure 85

Step 2

Pull in and hold retention spring on Tether Hook, then remove hook from tether anchor as shown in **Figure 86** and **87**.

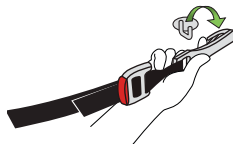


Figure 86



Figure 87

Step 3

Loosen LATCH Belt by pressing the adjuster button and pulling out on LATCH Belt as shown in **Figure 88**.

- Pressing down in center of car seat to reduce tension on LATCH Belt will make it easier to loosen LATCH Belt.

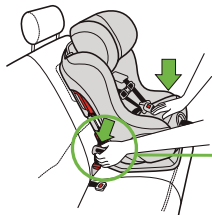


Figure 88

Step 4

Remove each LATCH Connector from vehicle lower anchors by pressing and holding the red release button while pulling the LATCH Connector as shown in **Figure 89**.

Step 5

Remove car seat from vehicle.

Step 6

Remove LATCH Belt from Forward-Facing Belt path and store LATCH Belt. See "LATCH Belt Storage" on page 81.

Step 7:

Store Top Tether. See "Top Tether Storage" on page 83.

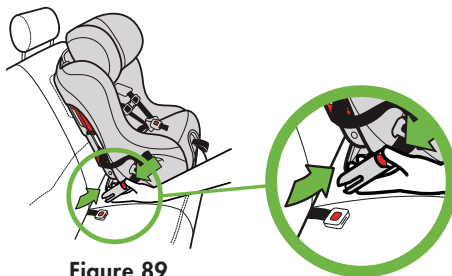


Figure 89



Installing Forward-Facing Car Seat With Vehicle Belt



WARNING – DEATH or SERIOUS INJURY can occur

- Vehicle belt must be routed through Forward-Facing Belt Path and contained in both red Forward-Facing Belt Guides when using car seat Forward-Facing.
- Forward-Facing Belt Lock-off must be used when installing with lap/shoulder belt.
- Not all vehicle belts are safe for use with this car seat. Read your vehicle owner's manual and the "Vehicle Belt Requirements" section in this manual.
- ALWAYS secure the Top Tether provided with this car seat when installing Forward-Facing with a lap belt. NEVER use this car seat, when installing Forward-Facing with a lap belt, without the Top Tether.
- ALWAYS secure the Top Tether provided with this car seat when installing Forward-Facing with a lap/shoulder belt unless no Top Tether Anchor is available.

Step 1

Prepare car seat for Forward-Facing Installation:

- Check that the Recline Foot is in the Forward-Facing position as shown in **Figure 90**. If needed, grasp forward edge of Recline Foot and rotate towards the back of the seat, pressing it in to the recess in the seat bottom.
- If the Anti-Rebound Bar is attached, remove it now, see "Installing/Removing Anti-Rebound Bar" on page 78.

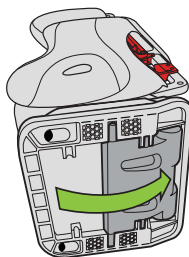


Figure 90

Step 2

Select a Forward-Facing vehicle seating location which has a vehicle belt which can be used with this seat and a top tether anchor point as shown in **Figure 91**.

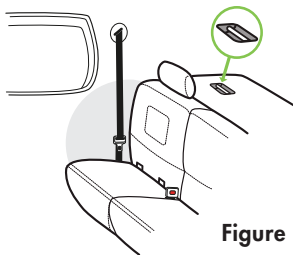


Figure 91

Step 3

If the vehicle seat back is adjustable, make sure the seat back is locked in a more upright position. Refer to vehicle owner's manual for recommended seat back angle. **DO NOT** install or use this car seat while the vehicle seat back is excessively reclined, as shown in **Figure 92**.



Figure 92

Step 4

Remove Tether Hook from its storage location on back of car seat. See “Top Tether Storage” on page 83.

- Lengthen Top Tether belt by pressing and holding Tether Adjuster while pulling strap as shown in **Figure 93**.
- Place Tether Hook in the seat of the car seat.

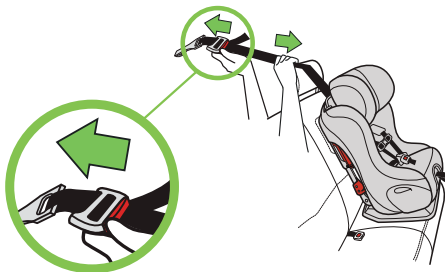


Figure 93

Step 5

Place car seat Forward-Facing in the vehicle seat location selected, and route vehicle belt through the Forward-Facing Belt Path. Take care not to put vehicle belt between Harness and back of seat, and buckle vehicle belt, as shown in **Figure 94**.

- Check that vehicle belt is contained in both red Forward-Facing Belt Guides.

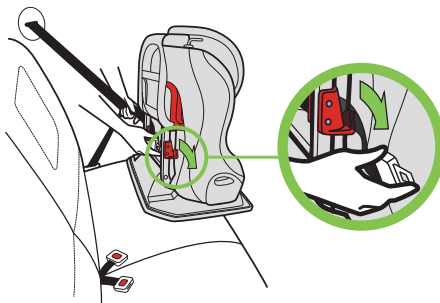


Figure 94

Step 6

If installing with a lap/shoulder belt, open the Forward-Facing Belt Lock-off on the same side of the seat as the vehicle shoulder belt anchor point. Place the vehicle shoulder belt through the Forward-Facing Belt Lock-off as shown in **Figure 95**.

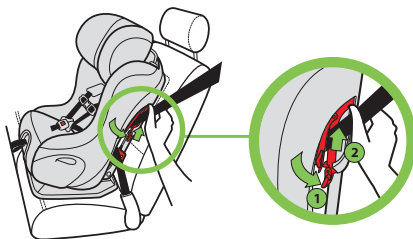


Figure 95

Step 7

Center car seat in the vehicle seating position chosen, and tighten vehicle seat belt to secure the car seat.

- Press down in center of car seat to depress the vehicle cushion and pull end lap belt only or shoulder portion of lap/shoulder belt to tighten as shown in **Figure 96** (lap belt only) or **Figure 97** (lap/shoulder belt).
- If using a lap/shoulder belt: while holding the vehicle belt tight, lock Forward-Facing Belt Lock-off as shown in **Figure 98**.

NOTE: Use only one Shoulder Belt Lock-Off at a time. NEVER use both in the Forward-Facing Mode.

Step 8

Check that the entire belt is laying flat, placed correctly through both red Forward-Facing Belt Guides and NOT between the Harness and seat, as shown in **Figure 99** (lap belt only) and **Figure 100** (lap/shoulder belt.)

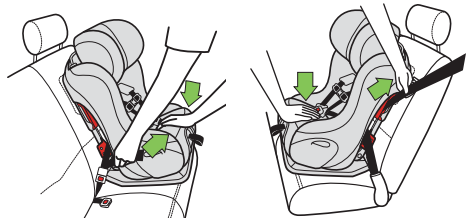


Figure 96

Figure 97

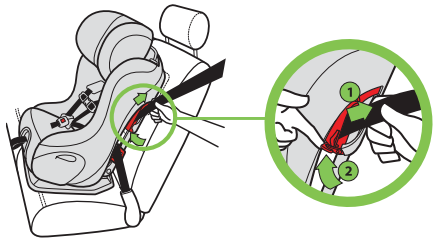


Figure 98

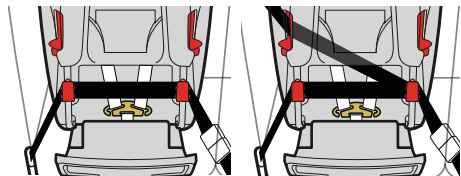


Figure 99

Figure 100

Step 9

Attach Tether Hook to vehicle top tether anchor as shown in **Figure 101** or **Figure 102** and pull firmly on free end of strap until Top Tether is snug.

Refer to vehicle owner's manual for recommended Top Tether routing and identification of top tether anchor point

Step 10

Check for secure installation. Gripping car seat at top of armrests, pull car seat front to back and left to right to check for secure installation as shown in **Figure 103**. Vehicle belt and Top Tether must stay tight and child restraint should not move more than 1 in. (2.5 cm) in any direction.

- If vehicle belt does not stay tight or car seat cannot be securely installed, try a different vehicle seating location or install using LATCH, see "Installing Forward-Facing Car Seat With LATCH" on page 54.



Figure 101

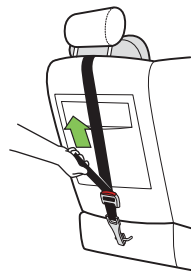


Figure 102

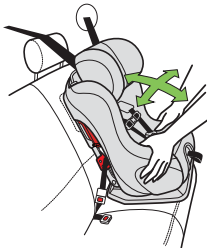


Figure 103



Removing Forward-Facing Car Seat Installed With Vehicle Belt

Step 1

Loosen Top Tether by pressing and holding Tether Adjuster while pulling strap as shown in **Figure 104**.

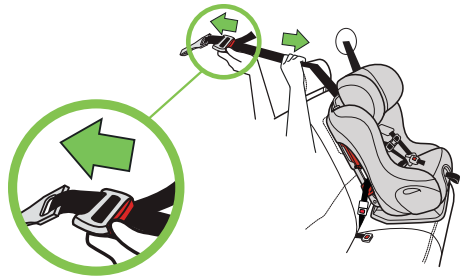


Figure 104

Step 2

Remove Tether Hook from vehicle tether anchor.

- Pull in and hold retention spring on Tether Hook, then remove hook from tether anchor as shown in **Figure 105** and **106**.

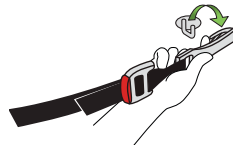


Figure 105

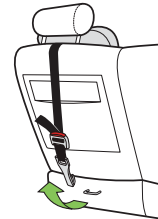


Figure 106

Step 3

Unbuckle vehicle belt.

- Pressing down in center of car seat to reduce tension on vehicle belt will make it easier to unbuckle vehicle belt as shown in **Figure 107**.

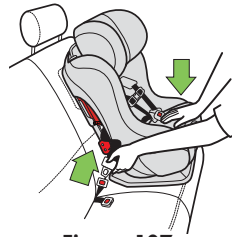


Figure 107

Step 4

Open Forward-Facing Belt Lock-off as shown in **Figure 108**.

Remove vehicle belt from Forward-Facing Belt Path.

Step 5

Remove this car seat from vehicle.

Step 6

Store the Top Tether, see “Top Tether Storage” on page 83.

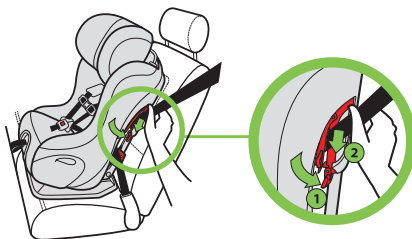


Figure 108

Securing Your Child in Car Seat



WARNING – DEATH or SERIOUS INJURY can occur

- Check that Harness fits child snugly each time they are buckled into seat.
- To avoid injury, child must be secured by an adult. NEVER allow the child to buckle themselves in this car seat.
- Child must be dressed in clothing with arms and legs that will not interfere with buckling and snugly adjusting Harness.
- NEVER place blankets between Harness and child.
- Prevent death from heat exposure: NEVER leave child unattended, even when sleeping. Vehicle interiors can reach very high temperatures quickly, even when it is not a hot or sunny day.
- Strangulation hazard: child can strangle in loose Harness Straps. NEVER leave child in car seat when Straps are loose or undone.
- The bottom of the Headrest must ALWAYS be at or above the Shoulder Harness Slots in use.

Step 1

Loosen Harness:

- While lifting up on Harness Adjuster Tab, pull out on Shoulder Harness Straps as shown in **Figure 109**.

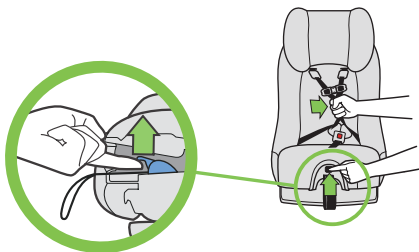


Figure 109

Step 2

Place child in car seat with their back flat against the Seat Back as shown in **Figure 110**.

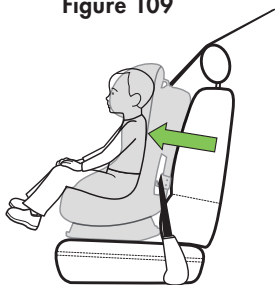


Figure 110

Step 3

Place child's arms through Shoulder Harness Straps and position the Straps over child's shoulders and thighs.

Step 4 (for Rear-Facing use only)

Check that the Rear-Facing Level Reference Line appropriate for the child's weight is parallel to the ground, as shown in **Figure 111**, and adjust if necessary. See "Installing/Removing Rear-Facing Car Seat" on page 34 if adjustment is required.

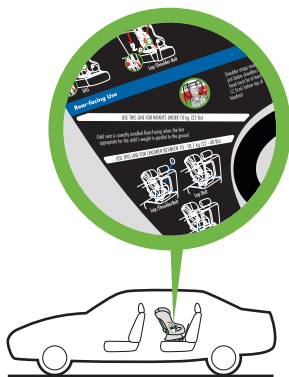


Figure 111

Step 5

Check position of Shoulder Harness.



Rear-Facing: The Shoulder Harness Straps must be through Shoulder Harness Slots at or below and closest to the child's shoulders, as shown in **Figure 112**.

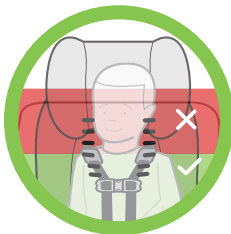


Figure 112



Forward-Facing: The Shoulder Harness Straps must be through Shoulder Harness Slots at or above and closest to the child's shoulders, as shown in **Figure 113**.

If the child's shoulders are above the highest set of Shoulder Harness Slots in the car seat's seat back, your child is too large for this car seat.

See "Shoulder Harness Adjustment" on page 21 to change position of Shoulder Harness Straps.

Step 6

Check Position of Headrest:

The bottom of the Headrest must ALWAYS be at or above the Shoulder Harness Slots in use.

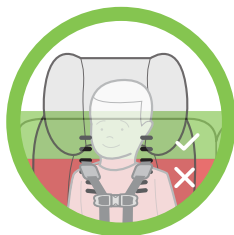


Figure 113



Rear-Facing: The top of the child's head must be at least 1 in. (2.5 cm) below the top of the car seat's Headrest, as shown in **Figure 114**. If the top of the child's head is less than 1 in. (2.5 cm) below the top of the Headrest in the highest adjustment position, your child is too large for using this car seat Rear-Facing and must be transitioned to using this car seat Forward-Facing.

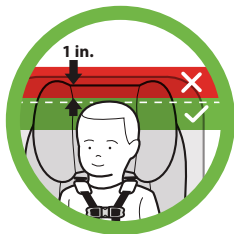


Figure 114



Forward-Facing: The tops of the child's ears **MUST** be below the top of the car seat's Headrest, as shown in **Figure 115**. If the tops of the ears are above the top of this car seat's Headrest in the highest adjustment position, your child is too large for this car seat.

See "Adjusting Headrest" on page 18 to change Headrest position.

Step 7

Check position of Crotch Strap:



Rear-Facing: The Crotch Strap should be positioned in the inner Crotch Strap Slot as shown in **Figure 116**.



Forward-Facing: The Crotch Strap should be adjusted to the longer Crotch Strap length and positioned in the outer Crotch Strap Slot, as shown in **Figure 117**.

See "Crotch Strap Adjustment" on page 19 to change the position or length of the Crotch Strap.

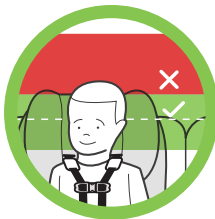


Figure 115

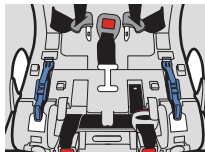


Figure 116

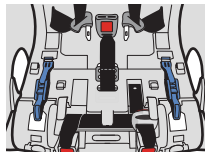


Figure 117



Step 8

Buckle Harness:

- Insert Buckle Tongues into Buckle one at a time as shown in **Figure 118**. You should hear a click.
- Pull up on tongues to check that they are securely locked.

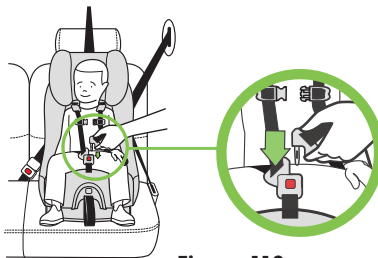


Figure 118

Step 9

Pull Harness Adjuster Strap to snugly adjust Harness Straps as shown in **Figure 119**.

- Check that Harness Straps are snug on shoulder and thighs.
- A snug Harness should not allow any slack. It lies in a relatively straight line without sagging. It does not press on the child's flesh or push the child's body into an unnatural position.

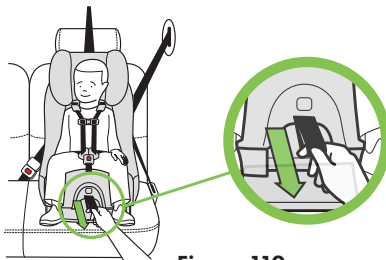


Figure 119

NOTE: If Harness cannot be snugly adjusted as described above, see step 3 of "Shoulder Harness Rethreading" on page 25 to make the harness smaller.

Step 10

Close Chest Clip and position Chest Clip at arm pit level as shown in **Figure 120**.

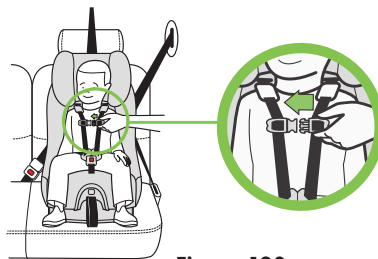


Figure 120

Removing Your Child From Car Seat

Step 1

Separate Chest Clip by squeezing release tabs together (1) and pulling Chest Clip apart (2) as shown in **Figure 121**.

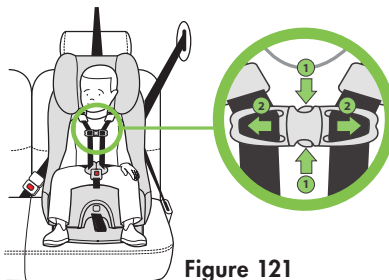


Figure 121

Step 2

Unbuckle Harness by pressing red release button on Buckle as shown in **Figure 122**.

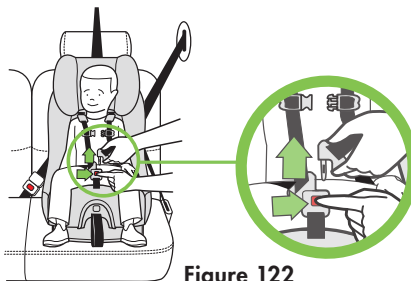


Figure 122

Step 3

Loosen the Harness by lifting up on Harness Adjuster Tab and pulling out on Shoulder Harness Straps as shown in **Figure 123**. Remove child's arms from Harness and remove them from car seat.

NOTE: To keep the Harness out of the way for easier placement or removal of your child, place the Buckle Tongues between the fabric and the plastic panel on the exterior of the child seat.

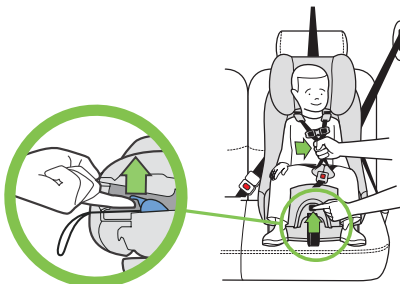


Figure 123

Operation and Adjustment

Removing/Installing Seat Cushion

! **WARNING – DEATH or
SERIOUS INJURY can occur**

- NEVER use this car seat without the Seat Cushion in place.

TO REMOVE SEAT CUSHION

Step 1

If Buckle Pad is installed, grasp top of Buckle Pad and pull up to remove from Buckle.

Unfasten the locking tabs at the lower front edge of the seat cushion.

Step 2

Grasp Seat Cushion at the bottom front edge, then lift and pull forward as shown in **Figure 124**. Once the Seat Cushion releases, pull the Buckle through the Seat Cushion.

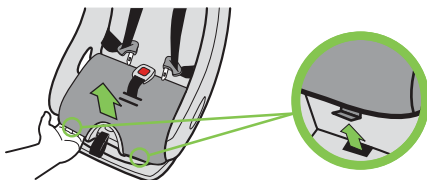


Figure 124

TO INSTALL SEAT CUSHION

Step 1

Insert the Buckle through the slot in the Seat Cushion that matches the slot the Crotch Strap is through in the seat.

Step 2

Insert the tabs on the back of the Seat Cushion through the slots in the pad and into the seat back at the back of the seat bottom.

Push the locking tabs at the lower front of the Seat Cushion into the holes at the front edge of the seat as shown in **Figure 125**.

Step 3

Grasp Buckle and push through opening in Buckle Pad to install Buckle Pad.

Installing/Removing Anti-Rebound Bar

TO INSTALL ANTI-REBOUND BAR

Step 1

Rotate Recline Foot to Rear-Facing position by pulling on edge of Recline Foot and rotating it forward until it locks in to position, as shown in **Figure 126**.

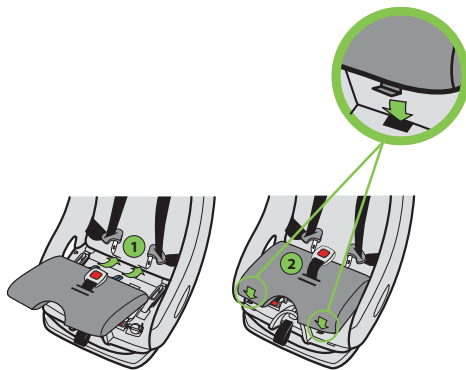


Figure 125

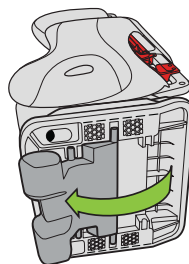


Figure 126

Step 2

Remove Seat Cushion, see “Removing/Installing Seat Cushion” on page 77.

Remove LATCH Connectors from their storage location, see “LATCH Belt Storage” on page 81.

Step 3

Insert the Anti-Rebound Bar into the holes in the bottom of the seat on each side of the Recline Foot as shown in **Figure 127**.

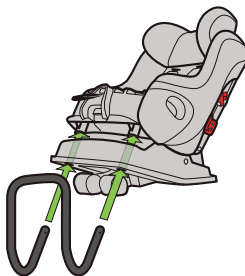


Figure 127

Step 4

Hold the Anti-Rebound Bar in place and insert Locking Pins into the holes in the seat and through the Anti-Rebound Bar as shown in **Figure 128**. Check that each Locking Pin is securely installed through both holes in the seat and in the Anti-Rebound Bar and that the Locking Pin Clips are through the Locking Pins.

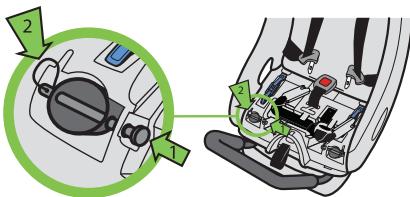


Figure 128

Step 5

If installing with vehicle belt, place LATCH Connectors back into their storage location, see “LATCH Belt Storage” on page 81.

TO REMOVE ANTI-REBOUND BAR

Step 1

Remove the Seat Cushion, see “Removing/Installing Seat Cushion” on page 77.

If LATCH Connectors are stored, remove them from their storage location, see “LATCH Belt Storage” on page 81.

Step 2

Remove the Locking Pins and Locking Pin Clips from the seat as shown in **Figure 129**. Remove the Anti-Rebound Bar from the seat.

NOTE: Keep Locking Pins and Locking Pin Clips with Anti-Rebound Bar for storage.

Step 3

Place LATCH Connectors back into their storage location, see “LATCH Belt Storage” on page 81.

Install the Seat Cushion, see “Removing/Installing Seat Cushion” on page 77.

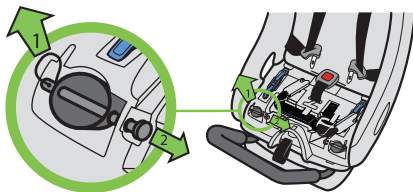


Figure 129

LATCH Belt Storage

REMOVAL OF LATCH BELT FROM STORAGE

Step 1

Remove the Seat Cushion, see “Removing/Installing Seat Cushion” on page 77.

Step 2

Remove the LATCH Adjuster (1) and Belt (2) from their storage position in the seat bottom shown in **Figure 130**.

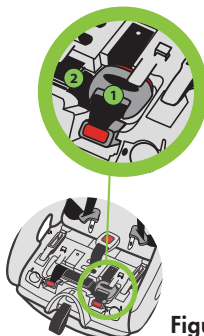


Figure 130

Step 3

Push and hold red release button on LATCH Connectors and pull out as shown in **Figure 131**.

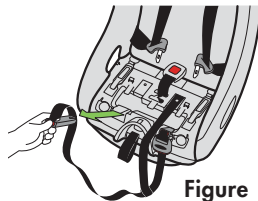


Figure 131

STORAGE OF LATCH BELT

Step 1

Remove the Seat Cushion, see “Removing/Installing Seat Cushion” on page 77.

Step 2

Place LATCH Connectors in seating area by inserting through Rear-Facing Belt Path.

Step 3

Insert the LATCH Connectors, with the slots in the end oriented toward the outside of the seat, into the openings at the front of the seat bottom. As shown in **Figure 132**.

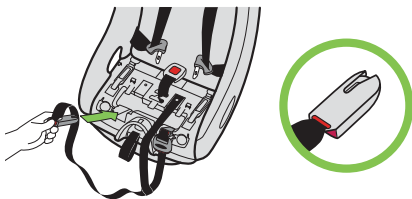


Figure 132

Step 4

Insert the LATCH Adjuster (1) into the square recesses behind the LATCH Connector, fold the excess LATCH Belt (2) and insert under tab between adjusters as shown in **Figure 133**.

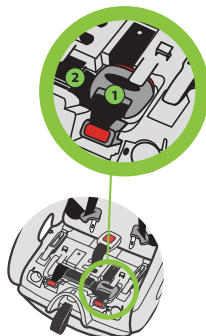


Figure 133

Step 5

Install the Seat Cushion, see "Removing/Installing Seat Cushion" on page 77.

Top Tether Storage

Removal: Remove Instruction Manual and Top Tether belt from back of seat. Pull in and hold retention spring on Tether Hook, then remove hook from storage bar as shown in **Figure 134**, then replace Instruction Manual.

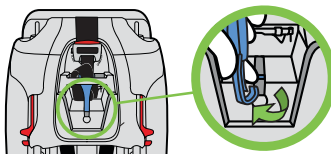


Figure 134

Storage: Remove Instruction Manual from back of seat. Hook Tether Hook around storage bar as shown in **Figure 135**, fold Top Tether belt and insert into Tether Storage. Replace Instruction Manual.

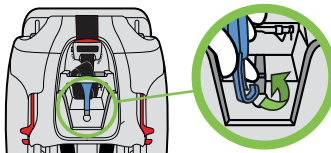


Figure 135

Instruction Manual Storage

After carefully reading and following these instructions, keep this manual for future use and store in the compartment located in Shoulder Harness Access Panel, as shown in **Figure 136**.

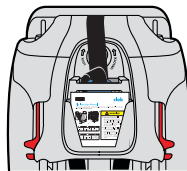


Figure 136

Aircraft Installation

Clek strongly recommends that children are secured in their child seat during airline travel.

FORWARD-FACING

To install this seat in an aircraft forward-facing, follow the instructions for installing the seat with a lap belt in the “Installing Forward-Facing Car Seat With Vehicle Belt” on page 62.

IMPORTANT: Aircraft are not equipped with top tether anchors. The Top Tether should be stored in the back of the car seat and not used on an aircraft, see “Top Tether Storage” on page 83.

REAR-FACING

To install this seat in an aircraft rear-facing, follow the instructions for installing the seat with a lap belt in the “Installing Rear-Facing Car Seat With Vehicle Belt” on page 45.

NOTE: If it is necessary to check your seat, it must be packed in a Clek Weelee Travel Bag (sold separately). Damage may result from checking your seat without proper packaging.

Care and Cleaning

Removing/Installing Seat Cushion Cover

TO REMOVE SEAT CUSHION COVER

Step 1

Remove the Seat Cushion from the Seat, see "Removing/Installing Seat Cushion" on page 77.

Step 2

Turn Seat Cushion over to locate the Seat Cushion Cover attachments, as shown in **Figure 137**.

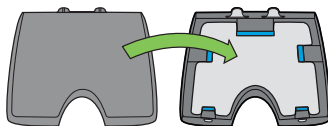


Figure 137

Step 3

Using your thumb, push inward on each Seat Cushion Cover attachment one at a time to release the Cover from the Seat Cushion, as shown in **Figure 138**.

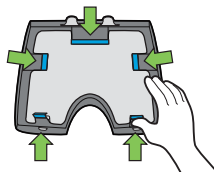


Figure 138

Step 4

Remove Seat Cushion Cover from Seat Cushion, as shown in **Figure 139**.

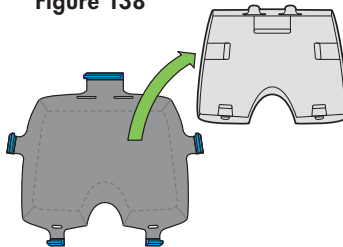


Figure 139

TO INSTALL SEAT CUSHION COVER

Step 1

Place Seat Cushion Cover on a flat surface with Seat Cushion Cover attachments facing up, as shown in **Figure 140**.

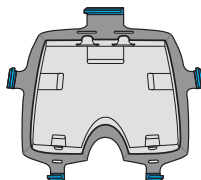


Figure 140

Step 2

Place Seat Cushion onto Seat Cushion Cover, aligning the Seat Cushion with the Seat Cushion Cover attachments.

Step 3

Reattach Seat Cushion Cover attachments to Seat Cushion by wrapping the Seat Cushion Cover sides around the entire Seat Cushion, as shown in **Figure 141**.

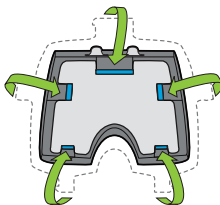


Figure 141

Step 4

Install Seat Cushion, see “Removing/Installing Seat Cushion” on page 77.

SEAT BACK COVER REMOVAL/INSTALLATION

Removal of the seat back cover is not recommended unless necessary due to heavy soiling which cannot be removed by surface washing. For instructions on removal and installation of the seat back cover go to: www.clekinc.com/cover-instructions-fflo

Car Seat Cleaning

FABRIC CARE INSTRUCTIONS

Step 1

If the spot has dried, try lightly brushing or scraping off the residue. Wipe surface with water.

Step 2

If a spot still remains, apply a mild detergent to fabric with a light mist.

Step 3

Work area using soft brush or edge of spoon from outside of spot towards the middle.

Step 4

Allow solution to work for approximately one minute.

Step 5

Remove with clean water or blot with clean soft towel.

Step 6

Repeat steps 3-5 as necessary until spot is removed.

Step 7

Rinse with clear lukewarm water and blot with clean soft white cloth as final step.

SEAT FRAME (EXTERIOR PLASTICS ONLY) WASHING INSTRUCTIONS

Use a soft cloth with warm water and soap. Apply light pressure with cloth in small circular motions.

Do NOT remove the labels from this car seat. They are meant to be permanent so they can remind you and others of important information. Removal will mar the finish of the seat.

HARNESS CARE INSTRUCTIONS

Surface clean straps with a damp cloth using warm water and a mild detergent.

BUCKLE WASHING INSTRUCTIONS

Buckle may be rinsed under warm water. Do not use detergents or lubricants.

Recycling Your Car Seat

For instructions on how to recycle your Clek Fflo child seat, please visit:
www.clekinc.com/recycle

Troubleshooting

For instructions on troubleshooting your Clek Fflo child seat, please visit:
www.clekinc.com/support/flo

Accessories

Optional accessories for this product may be purchased at:
www.clekinc.com/accessories

Warranty

LIMITED WARRANTY

Clek Inc. warrants, only to the original consumer purchaser and only if this product was purchased (new and unused in an unopened box) from an authorized Clek retailer listed at www.clekinc.com, that this product will be free from defects in material and workmanship for one (1) year from the date of original purchase (the "Warranty Period"). During the Warranty Period, Clek Inc. will, at its option, repair or replace this product if it is found by the manufacturer to be defective in material or workmanship. Clek Inc. reserves the right to discontinue or change parts, fabrics, models, or products, or to substitute this product with a comparable model or product. To make a claim under this warranty, please contact us at http://www.clekinc.com/contact_us/, call us at 1-866-656-2462, or write to us at Clek Inc., Attn: Customer Service, Clek Inc., 226 Lesmill Rd. Toronto, Ontario, Canada M3B 2T5. An original receipt is required to validate your warranty and shipping charges will be the responsibility of the original consumer purchaser. To expedite the processing of any future warranty claims and to verify the original date of purchase, please complete and mail the pre-addressed owner registration card within thirty (30) days of purchase.

WARRANTY LIMITATIONS

This warranty does not cover the effects of normal wear and tear or damage resulting from negligence, modification, improper installation, accidents, misuse or abuse of this product. It is expressly agreed that the obligations of Clek Inc. and the original consumer purchaser's remedies under the limited warranty contained herein are exclusive and are strictly limited to the repair or replacement of the product. This limited warranty is conditional upon strict compliance with the provisions of the Instruction Manual. In no event will Clek Inc. or the dealer selling this product be liable to you for any damages, including incidental or consequential damages, arising out of the use or inability to use this product.

LIMITATION OF WARRANTIES AND STATE/PROVINCIAL LAW RIGHTS

The warranty and remedies as set forth above are exclusive and in lieu of all others, oral or written, express or implied. To the extent permitted by applicable law, any implied warranties, including implied warranties of merchantability and fitness for a particular purpose, are hereby disclaimed. Some states/provinces DO NOT allow limitations as to how long an implied warranty lasts or the exclusion or limitation of incidental or consequential damages, so the above limitations may not apply to you. This warranty gives you specific legal rights, and you may have other rights, which vary from state/province to state/province. Neither Clek Inc. nor the dealer selling this product has authorized any person to create for it any other warranty, obligation, or liability in connection with this product.

How To Receive Spanish Instructions

This instruction manual is also available in Spanish. To request a copy to be sent to you free of charge, please contact Clek Customer Service at 1-866-656-2462 or email us at customerservice@clekinc.com. You can also download a copy of the Fflo instruction manual in Spanish online at www.clekinc.com/support/flo/videos-and-manuals

Cómo recibir las instrucciones en español

Este manual de instrucciones también está disponible en español. Para pedir que se le envíe una copia sin cargo alguno, tenga a bien ponerse en contacto con el servicio al cliente de Clek, para lo cual llame al 1-866-656-2462 o envíe un mensaje de correo electrónico a customerservice@clekinc.com. También puede descargar una copia del manual de instrucciones de Fflo en español por Internet en www.clekinc.com/support/flo/videos-and-manuals

Keep this Instruction Manual for future use.
Store in Shoulder Harness Access Panel on back of this car seat.



www.clekinc.com

Clek Inc.
226 Lesmill Road
Toronto, Ontario Canada
M3B 2T5
1-866-656-2462