



LG20CAENA1

clek

Liingo Instruction Manual



HEIGHT

81.3 cm (or less)
32 in. (or less)

WEIGHT

1.8–15.9 kg
4–35 lb

Keep instructions for future use. Store in the Instruction Manual Storage Slot in UAS Bin.



WARNING

- Read and understand all information and instructions on product labels and in this manual and in your vehicle owner's manual before installing or using this car seat/infant carrier.
- Failure to properly install or use this car seat or follow the warnings in this manual and on the car seat's labels can result in serious injury or death to the child in a sharp turn, sudden stop or crash.

Checklist for Proper Use

IMPORTANT: This is only a checklist — you **MUST** read and understand all of the warnings and instructions on this car seat's labels and in this manual before installing or using this car seat or carrier.

General Use Requirements:

- ✓ Child weighs between 1.8 and 15.9 kg (4 and 35 lb).
- ✓ Child's height is 81.3 cm (32 in.) or less.
- ✓ The top of the child's head is at least 2.5 cm (1 in.) below the top of the Carrier Seat Back.
- ✓ Shoulder Harness Straps **MUST** be through Shoulder Harness Slots at or just below and closest to child's shoulders.
- ✓ Newborn Support System **MUST** be used with infants 5 kg (11 lb) or less and if top of shoulders are below lowest Shoulder Harness Slots.

When installing this Car Seat in the Vehicle:

- ✓ Carrier is securely installed in a vehicle rear seat.
 - If Carrier must be installed in a front seat, the front air bag for that position **MUST** be deactivated and the vehicle owner's manual **MUST** state that this is an acceptable position to install a rear-facing car seat.
- ✓ Carrier is securely attached to the vehicle using either the UAS Belt or vehicle belt and there is no slack in the belt.
 - If installing with UAS, the UAS Belt is routed through both blue UAS/Lap Belt Guides.
 - If installing with a lap/shoulder belt, the vehicle lap belt is routed through both blue UAS/Lap Belt Guides, and the vehicle shoulder belt is wrapped around the back of the Carrier and through the blue Shoulder Belt Guide.
 - If installing with a lap-only belt, the vehicle lap belt is routed through both blue UAS/Lap Belt Guides.
- ✓ Blue recline reference line on side of Carrier is level with the ground.
- ✓ Harness is buckled and snugly adjusted on the child.
- ✓ Carry Handle is adjusted to and locked in the upright position.

When using this Carrier outside of the vehicle:

- ✓ Harness is buckled and snugly adjusted on the child. If the straps are loosely buckled or unbuckled, the child can fall out or strangle on Harness.
- ✓ Carry Handle is locked in the upright position before lifting Carrier by the Handle.
- ✓ Carrier is securely attached to the stroller.
- ✓ If not securely attached to a stroller or being carried, Carrier **MUST** be placed on the floor.
 - NEVER place Carrier on an elevated surface, it can fall injuring the child.
 - NEVER place Carrier on a soft surface where it can roll over suffocating the child.
- ✓ NEVER leave child unattended.
- ✓ NEVER place Carrier on a shopping cart. If you must use Carrier in a store, Carrier may be placed inside the large part of the shopping cart (where it can't fall), or securely attached to a compatible stroller.

Table of Contents

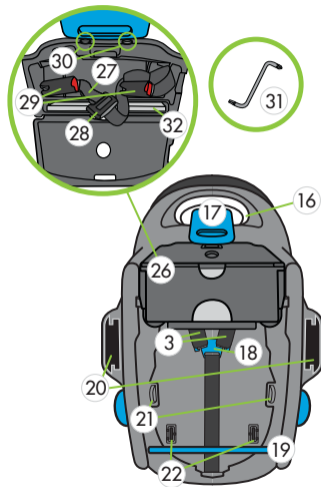
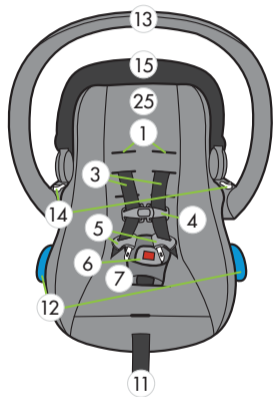
Checklist for Proper Use	2
General Use Requirements.....	2
When installing this Car Seat in the Vehicle	3
When using this Carrier outside of the Vehicle.....	4
Car Seat Features	8
Registration & Recall Information	10
Registering Your Car Seat.....	11
Warnings	12
Certification	19
Vehicle Classification	19
Child Size Requirements	20
Adjusting Car Seat to Fit Your Child	22
Changing Shoulder Harness Height	22
Selecting the Correct Shoulder Harness Slot	24
Unthreading the Shoulder Harness	24

Rethreading the Shoulder Harness.....	26
Using the Newborn Support System.....	29
Shoulder Harness Cover Removal/Installation.....	32
Securing Your Child in Car Seat	33
Removing Your Child from Car Seat	40
Operation and Adjustments.....	42
Carry Handle Adjustment	42
Adjusting the Canopy	44
Removing/Installing UAS Bin.....	45
Vehicle Information	49
Vehicle Universal Anchorage System (UAS)	49
Vehicle Seat Location Requirements	51
Vehicle Belt Requirements	53
Vehicle Belt Systems	56
Installing/Removing Car Seat	60
Installing Car Seat with UAS.....	62
Removing Car Seat Installed with UAS	70

Installing Car Seat with Vehicle Belt	73
Removing Car Seat Installed with Vehicle Belt	82
Using Carrier Outside of the Vehicle	83
Using Carrier on Stroller	85
Installing Carrier on Stroller	87
Releasing Carrier from Stroller	90
Aircraft Installation	91
Care and Cleaning	91
Car Seat Cleaning	92
Removing/Installing Carrier Cover	95
Recycling Your Car Seat.....	105
Troubleshooting.....	105
Accessories	105
Warranty	106

Car Seat Features – Carrier

- 1 Shoulder Harness Slots
- 2 Shoulder Harness Covers
- 3 Shoulder Harness Straps
- 4 Chest Clip
- 5 Buckle Tongues
- 6 Buckle
- 7 Crotch Strap
- 8 Buckle Pad
- 9 Harness Adjuster Access Slot
- 10 Harness Adjuster Tab
- 11 Harness Adjuster Strap
- 12 UAS/Lap Belt Guides
- 13 Carry Handle
- 14 Carry Handle Adjustment Buttons
- 15 Canopy
- 16 Stroller Release Handle (to release Carrier from stroller)
- 17 Vehicle Shoulder Belt Guide
- 18 Metal Harness Plate
- 19 Base Attachment Bars
- 20 Stroller Attachment Points
- 21 Inner Shell Release Tabs
- 22 Harness Anchor Plates
- 23 Newborn Support System – Support Cushion
- 24 Newborn Support System – Headrest
- 25 Carrier Cover
- 26 UAS Bin
- 27 UAS Belt
- 28 UAS Belt Adjuster
- 29 UAS Connectors
- 30 UAS Bin Attachment Screws
- 31 UAS Bin Removal Tool
- 32 Instruction Manual Storage



Registration & Recall Information



WARNING

- You **MUST** register this restraint (car seat) to be reached in a recall. Child restraints could be recalled for safety reasons.

Model Name: LIINGO

Serial Number: _____

Manufactured In: _____
(yyyy/mm/dd)

Date of Purchase: _____

Registering Your Car Seat

Please fill in the information on the previous page for your records. The model name, serial number and manufacturing date can be found on a label affixed to the bottom of the Carrier.

Fill out the prepaid registration postcard attached to the car seat and mail it today.

Child restraints could be recalled for safety reasons. You **MUST** register this restraint to be reached in a recall. Send your name, address, e-mail address if available, and the restraint's model number and manufacturing date to:

Clek Inc., 226 Lesmill Road, Toronto, Ontario, Canada, M3B 2T5

or call 1-866-656-2462

or register online at: www.clekinc.ca/register

For recall information, call Transport Canada's Road Safety Information Centre at 1-800-333-0371, or go to: www.tc.gc.ca/en/services/road/defects-recalls-vehicles-tires-child-car-seats/stay-informed.html

Warnings



WARNING – DEATH or SERIOUS INJURY can occur

- Failure to properly install or use this car seat or follow these warnings and instructions and those on this car seat's labels can result in serious injury or death of the child in a sharp turn, sudden stop or crash.
- DO NOT install or use this car seat until you read and understand the instructions in this manual and in your vehicle owner's manual. DO NOT let others install or use this car seat unless they understand how to correctly install and use it.
- Use only in a Rear-Facing position when using this car seat in a vehicle. Serious or crippling injury or death can result if infant faces front of vehicle.



WARNING (continued)

- Use only with children who weigh between 1.8 and 15.9 kg (4 and 35 lb) and whose height is 81.3 cm (32 in.) or less.
- Securely install this child restraint system rear-facing on a forward-facing vehicle seat using the lower connector system of the Universal Anchorage System (UAS), if available, or a vehicle seat belt.
- Discontinue use of this Car Seat when:
 - Child's weight exceeds 15.9 kg (35 lb)
 - Child's height exceeds 81.3 cm (32 in.)
 - Child's head is less than 2.5 cm (1 in.) below top of Carrier Seat Back.



WARNING (continued)

- ALWAYS check that the Carry Handle is locked in the Upright Position before lifting Carrier by the Handle. An unlocked handle could move unexpectedly, causing a child to fall.
- NEVER leave child unattended. ALWAYS keep child in view even when napping. DO NOT allow child to sleep unattended in this car seat or carrier.
- NEVER tend to your child's needs while driving. ALWAYS safely stop your vehicle to tend to your child's needs.
- NEVER take child out of Car Seat when vehicle is moving.



WARNING (continued)

- Strangulation Hazard: Children have **STRANGLED** in loose or partially buckled Harness Straps. Fully restrain the child even when Carrier is used outside the vehicle.
- Fall Hazard: Child's activity can move Carrier. **NEVER** place Carrier on counter tops, tables, or any other elevated surface.
- Suffocation Hazard: Carrier can roll over on soft surfaces and suffocate child. **NEVER** place Carrier on beds, sofas, or other soft surfaces.
- Choking Hazard: The screws used to attach the UAS Bin are small parts. Keep them away from children and store them and the UAS Bin Removal Tool in a safe location not accessible to children for later use.



**WARNING/
MISE EN GARDE**





WARNING (continued)

- Fall Hazard: The carrier can fall from the shopping cart.
DO NOT use on shopping cart.
 - Carrier may be placed inside large basket of shopping cart (where it can't fall), or securely attached to a compatible stroller.
- NEVER leave child unattended. ALWAYS keep infant in view even when napping. DO NOT allow infant to sleep unattended in this car seat.
- NEVER place Carrier near a window where cords from blinds or drapes can strangle a child.
- DO NOT use this Car Seat after a crash of any kind.
A crash can cause damage to this car seat that you cannot see.





WARNING (continued)

- Discontinue use of Car Seat after nine (9) years from the date of manufacture. The date of manufacture can be found on the label affixed to the bottom of the Carrier.
- DO NOT use accessories or parts with this car seat other than those provided by Clek Inc. Use of accessories or parts from other manufacturers could alter the performance of this car seat.
- NEVER use this Car Seat if it is damaged, broken or missing parts.
- NEVER use this Car Seat with a Liing Car Seat Base with the UAS Bin installed. UAS Bin MUST be removed prior to using this Car Seat with a Liing Car Seat Base.



WARNING (continued)

- ALWAYS store UAS Belt in UAS Bin when using this Car Seat as a Carrier or when installing this Car Seat using the vehicle belt.
- DO NOT attempt to make repairs to or otherwise modify or tamper with this car seat.
- NEVER use a second hand car seat or a car seat whose history you do not know.
- Register your car seat with Clek Inc.
- Avoid burn injury — ALWAYS touch the surfaces that will contact your child first before putting child in this car seat. This car seat can become very hot if left in the sun and can burn your child's skin.

Certification

- This child restraint system conforms to all applicable requirements of Canadian Motor Vehicle Safety Standard 213 and 213.1 and is certified for use in motor vehicles.
- This restraint is certified for use in Motor Vehicles and Aircraft.

IMPORTANT: Do NOT use with the Liing Car Seat Base on Aircraft. This restraint is certified for use in Aircraft only when used without the Liing Car Seat Base.

Vehicle Classification

- This car seat is for use only in the following classes of vehicles: passenger cars, trucks, and multi-purpose vehicles, such as SUVs (sport utility vehicles).

Child Size Requirements



WARNING

- DO NOT use this car seat if the child does not meet all of the size requirements listed on the next page. Using this car seat with a child who does not meet these requirements will increase the risk of serious injury or death to the child.

Child **MUST** meet **ALL** of the following requirements to use this car seat:

- ✓ Child weighs between 1.8 and 15.9 kg (4 and 35 lb).
- ✓ Child's height is 81.3 cm (32 in.) or less.
- ✓ The top of the child's head is at least 2.5 cm (1 in.) below the top of the Carrier Seat Back, as shown in **Figure 1**.
- ✓ Shoulder Harness Straps **MUST** be through Shoulder Harness Slots at or below and closest to child's shoulders, as shown in **Figure 2**.
- ✓ Newborn Support System **MUST** be used with infants 5 kg (11 lb) or less and if top of shoulders are below lowest Shoulder Harness Slots.

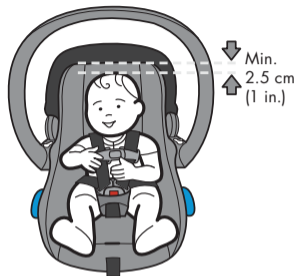


Figure 1



Figure 2

Adjusting Car Seat to Fit Your Child

Changing Shoulder Harness Height



WARNING

- To prevent ejection in a crash, Shoulder Harness Straps **MUST** be through the Shoulder Harness Slots at or just below and closest to the child's shoulders and through Harness Slots in Headrest.
- To prevent ejection in a crash, the loops at the end of the Shoulder Harness Straps **MUST** be completely inside the Metal Harness Plate.



WARNING (continued)

- To prevent ejection in a crash, NEVER use this car seat if either the Shoulder Harness Straps or Harness Adjuster Strap is routed over the Base Attachment Bars.
- To prevent ejection in a crash, Newborn Support System MUST be used if top of child's shoulders are below lowest Shoulder Harness Slots.

This car seat ships with the Shoulder Harness Straps in the second of three (3) Shoulder Harness Slots.

As the child grows, you will need to change the Shoulder Harness Slot position. The Shoulder Harness Straps MUST be through the Shoulder Harness Slots at or just below and closest to the child's shoulders. NEVER use with Shoulder Harness Straps positioned through Shoulder Harness Slots above the top of the child's shoulders.

Selecting the Correct Shoulder Harness Slot

Step 1

Place the child in the Carrier.

Step 2

Check to see which is the appropriate Shoulder Harness Slot that fits the child. Choose the Slots at or just below and closest to the child's shoulders, as shown in **Figure 3**.

NOTE: If using the Newborn Support Headrest, you will need to pull it forward to expose the Shoulder Harness Slots in the Carrier to check the height of Harness Slots.

Unthreading the Shoulder Harness

Step 1

Buckle the Harness and close the Chest Clip to prevent the Shoulder Harness Straps from twisting.



Figure 3

Step 2

Loosen the Harness:

- While pressing down on Harness Adjuster Tab, pull out on Shoulder Harness Straps to loosen Harness, as shown in **Figure 4**. The Harness Adjuster Tab is accessible through the slot sewn into the fabric between the Harness Adjuster Strap and the Crotch Strap.

Step 3

Turn Carrier over and detach the loop at the end of each Shoulder Harness Strap by sliding Strap out through the slot in Metal Harness Plate as shown in **Figure 5**.

Step 4

From front of Carrier, pull Shoulder Harness Straps out of Carrier Seat Back.

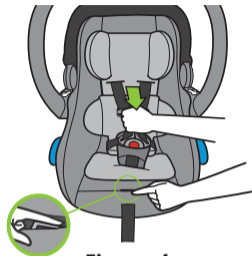


Figure 4

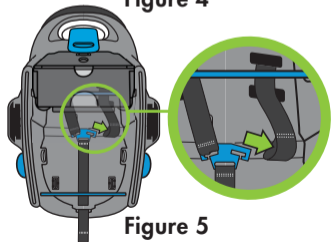


Figure 5

Rethreading the Shoulder Harness

Step 1

If using with the Newborn Support System Headrest:

- Insert the Shoulder Harness Straps through the Harness Slots in the Headrest, ensuring that the Straps are not twisted.
- From front of Carrier, insert the Shoulder Harness Straps through the chosen Shoulder Harness Slots in the Carrier Seat Back as shown in **Figure 6**, ensuring that the Straps are not twisted.



Figure 6

If using without the Newborn Support System Headrest:

- From front of Carrier, insert the Shoulder Harness Straps through the chosen Shoulder Harness Slots in the Carrier Seat Back as shown in **Figure 7**, ensuring that the Straps are not twisted.

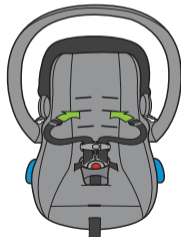


Figure 7

Step 2

Re-attach the Harness:

- Route Shoulder Harness Straps and Harness Adjuster Strap between Base Attachment Bars and bottom of Carrier, as shown in **Figure 8**.

NOTE: If necessary, UAS Bin may be removed to improve access when re-threading Shoulder Harness Straps. See “Removing/Installing UAS Bin” on **page 45**.

- Hold the silver Metal Harness Plate straight up ensuring there are no twists in the Harness Adjuster Strap, and slide the loop end of each Shoulder Harness Strap through the slot in the Metal Harness Plate, ensuring that each Strap is completely inside the slot, as shown in **Figure 9**.

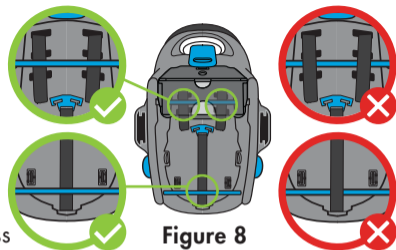


Figure 8

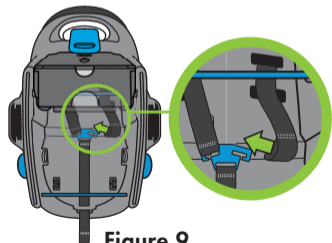


Figure 9

Step 3

Check that both Shoulder Harness Straps and the Harness Adjuster Strap are routed between the Base Attachment Bars and the bottom of the Carrier as shown in **Figure 10**.

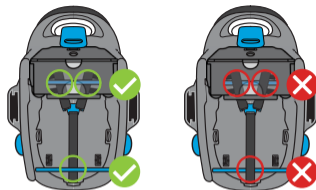


Figure 10

Checklist for Changing Shoulder Harness Slot:

- ✓ Shoulder Harness Straps are through the Shoulder Harness Slots in the Carrier Seat Back that are at or below and closest to the child's shoulders, and are at the same height on each side.
- ✓ End of each Shoulder Harness Strap is completely inside the slot in the Metal Harness Plate.
- ✓ Check that Shoulder Harness Straps and Harness Adjuster Strap are flat and NOT twisted.
- ✓ Shoulder Harness Straps and the Harness Adjuster Strap are routed between the Base Attachment Bars and the bottom of the Carrier and NOT over the Base Attachment Bars.

Using the Newborn Support System



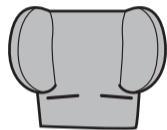
WARNING

- To prevent ejection in crash, the Newborn Support System **MUST** be used with infants less than 5 kg (11 lb) and when top of shoulders are below lowest Shoulder Harness Slots.

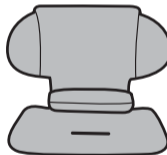
This car seat ships with the Newborn Support System installed. The Newborn Support System is comprised of a Support Cushion and a Headrest.

Proper Use of the Newborn Support System:

- Both the Support Cushion and Headrest **MUST** be used with infants weighing less than 5 kg (11 lb) and when top of shoulders are below lowest Shoulder Harness Slots.
- The Support Cushion can be used (optional) with children weighing 5 kg (11 lb) or more and until the child's shoulders reach the top Shoulder Harness Slot. **NEVER** use the Support Cushion when the child's shoulders are at or above the top Shoulder Harness Slot with the Support Cushion installed.
- The Headrest can be used (optional) until the child outgrows the car seat.



Headrest



**Support
Cushion**

Support Cushion Removal/Installation:

To Install: Place the Support Cushion on the Carrier seating surface with the Buckle Slot aligned with the Crotch Buckle, and pull the Buckle and Buckle Pad up through the Buckle Slot in the Support Cushion, as shown in **Figure 11**.

To Remove: Lift the Support Cushion off of the Carrier seating surface, pull Buckle down through Buckle Slot in Support Cushion, and remove.

IMPORTANT: After installing or removing the Support Cushion, it may be necessary to change the shoulder harness height. ALWAYS check that the Shoulder Harness Straps are through the Shoulder Harness Slots at or below and closest to the child's shoulders. See "Changing Shoulder Harness Height" on **page 22**.



Figure 11

Support Headrest Removal/Installation:

To Install: see “Rethreading the Shoulder Harness” on **page 26**.

To Remove: see “Unthreading the Shoulder Harness” on **page 24**.

Shoulder Harness Cover Removal/Installation

Use of the Shoulder Harness Covers included with this seat is optional.

To Install: Position Shoulder Harness Covers around Shoulder Harness Straps with snaps facing away from child’s neck and fasten the snaps together to close as shown in **Figure 12**.

To Remove: Unfasten the snaps on the Shoulder Harness Covers and remove Shoulder Harness Covers.

IMPORTANT: Remove Shoulder Harness Covers if they prevent the Chest Clip from being properly positioned at armpit level or if you are unable to achieve a snug Harness.



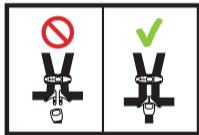
Figure 12

Securing Your Child in Car Seat



WARNING

- Shoulder Harness Straps **MUST** be through the Shoulder Harness Slots at or just below and closest to the child's shoulders.
- Strangulation Hazard: Children have **STRANGLED** in loose or partially buckled Harness Straps. Fully restrain the child even when Carrier is used outside the vehicle.
- Snugly adjust the belts provided with this child restraint around the child.
- Newborn Support System **MUST** be used with infants 5 kg (11 lb) or less and when top of shoulders are below lowest Shoulder Harness Slots.





WARNING (continued)

- NEVER use Support Cushion with infants over 5 kg (11 lb) when child's shoulders are at or above the top Shoulder Harness Slots with the Support Cushion installed.
- Child MUST be dressed in clothing with arms and legs that will not interfere with buckling and snugly adjusting Harness.
- NEVER place blankets between Harness and child.
- NEVER place extra padding under or behind the child. Extra padding or bulky clothing may prevent the Harness from being properly adjusted.
- Prevent death from heat exposure: NEVER leave child unattended in a vehicle, even when sleeping. Vehicle interiors can reach very high temperatures quickly, even when it is not a hot or sunny day.

Step 1

Loosen Harness:

- Press down on Harness Adjuster Tab and pull out on Shoulder Harness Straps, as shown in **Figure 13**. The Harness Adjuster Tab is accessible through the slot sewn into the fabric between the Harness Adjuster Strap and the Crotch Strap.

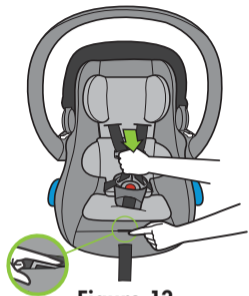


Figure 13

Step 2

Place child in Carrier with back flat against Carrier Seat Back as shown in **Figure 14**. Make sure the child is NOT slouching.

IMPORTANT: If using newborn support system, place child in seated position on top of the raised part of the support cushion with child's bottom all the way back to prevent slouching.



Figure 14

Step 3

Place child's arms through Shoulder Harness Straps making sure the Straps go over the child's shoulders and hips as shown in **Figure 15**. The straps NEVER go under the child's legs.

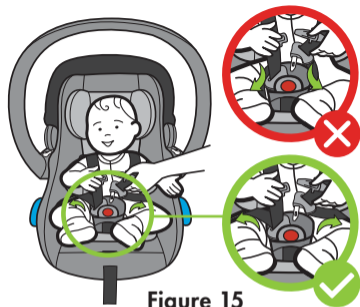


Figure 15

Step 4

Check position of Shoulder Harness Straps:

- The Shoulder Harness Straps **MUST** be through Shoulder Harness Slots at or just below and closest to child's shoulders, as shown in **Figure 16**.

See "Changing Shoulder Harness Height" on **page 22** to change position of Shoulder Harness Straps.



Figure 16

Step 5

Buckle Harness:

- Insert Buckle Tongues into Buckle one at a time as shown in **Figure 17**. You should hear a click after each Buckle Tongue is inserted.
- Pull up on Buckle Tongues to check that they are securely locked.

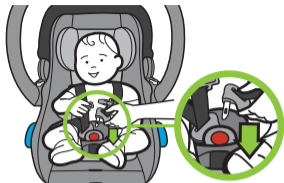


Figure 17

Step 6

Tighten Harness Straps:

- Pull upwards on Shoulder Harness Straps to remove any slack from the straps that goes over the hips/thighs, as shown in **Figure 18**.
- Pull Harness Adjuster Strap to remove slack in the Shoulder Harness Straps as shown in **Figure 19**.
- Repeat these steps several times until there is no more slack to pull out of the Shoulder Harness Straps.

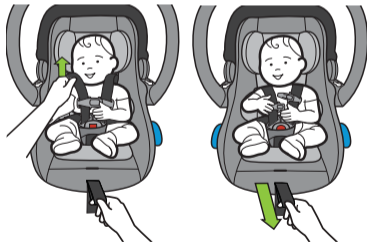


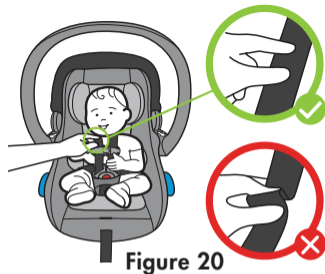
Figure 18

Figure 19

Step 7

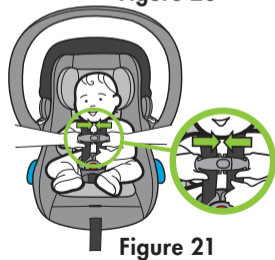
Check that Shoulder Harness Straps are snug on both shoulders and hips/thighs. A snug strap should not allow any slack. It lies in a relatively straight line without sagging. It does not press on the child's flesh or push the child's body into an unnatural position.

The Shoulder Harness Straps are snug when you are unable to pinch a horizontal fold in the harness webbing at the child's shoulders, as shown in **Figure 20**.



Step 8

Close Chest Clip and position at arm pit level as shown in **Figure 21**.



Checklist for securing child:

- ✓ Newborn Support System is being used if child weighs 5 kg (11 lb) or less and if top of shoulders are below lowest Shoulder Harness Slots.
- ✓ Child is NOT slouching and Shoulder Harness Straps go over the child's shoulders and hips.
- ✓ The top of the child's head is at least 2.5 cm (1 in.) below the top of the Carrier Seat Back.
- ✓ Shoulder Harness Straps are through Shoulder Harness Slots at or below and closest to the top of the child's shoulders.
- ✓ Harness is buckled and snugly adjusted on child.
- ✓ Chest Clip is closed and is adjusted to arm pit level.

Removing Your Child from Car Seat

To help achieve a snug Harness, the Shoulder Harness Straps should be loosened each time the child is removed from the seat and tightened each time the child is buckled in the seat.

Step 1

Loosen Harness:

- While pressing down on Harness Adjuster Tab, pull out on Shoulder Harness Straps to loosen Harness, as shown in **Figure 22**. The Harness Adjuster Tab is accessible through the slot sewn into the fabric between the Harness Adjuster Strap and the Crotch Strap.



Figure 22

Step 2

Separate Chest Clip:

- Press release tab in (1) and pull apart (2) to separate as shown in **Figure 23**.

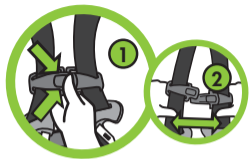


Figure 23

Step 3

Unbuckle Harness:

- Press red release button on Buckle as shown in **Figure 24**. Slide Shoulder Harness Straps off of shoulders and remove child from Carrier.



Figure 24

Operation and Adjustments

Carry Handle Adjustment



WARNING

- ALWAYS check that the Carry Handle is locked in the Upright Position before lifting Carrier by the Handle. An unlocked handle could move unexpectedly, causing a child to fall.

The Carry Handle has three adjustment positions as shown in **Figure 25**: Upright (1), Stowed (2), Ground (3).

Step 1

Select the proper Carry Handle Adjustment Position:

- **Using inside of the vehicle:** The Handle **MUST** be locked in the upright position.
- **Using outside of the vehicle:** The Handle may be used in any of the (3) adjustment positions, but **MUST** be locked in the upright position before lifting and when being carried.

Step 2

Adjust the Carry Handle Position:

- Press both Carry Handle Adjustment Buttons and rotate Handle until it locks in the desired position as shown in **Figure 26**.

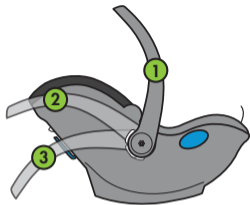


Figure 25

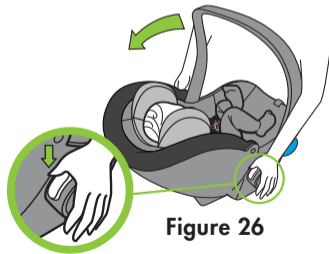


Figure 26

Adjusting the Canopy

The Carrier has a 3-position Canopy. All Canopy positions are approved for use in vehicle or outside of vehicle.

To adjust the Canopy between the closed position (Position 1) and the open position (Position 2): grasp the front of the Canopy and pull it forward or rotate it back.

To fully extend Canopy: Grasp zipper tab and unzip the canopy extension. Then grasp front of Canopy and pull it forward to the fully-open position (Position 3), as shown in **Figure 27**.

NOTE: The canopy extension **MUST** be zipped closed when using Canopy Position 1 or 2.

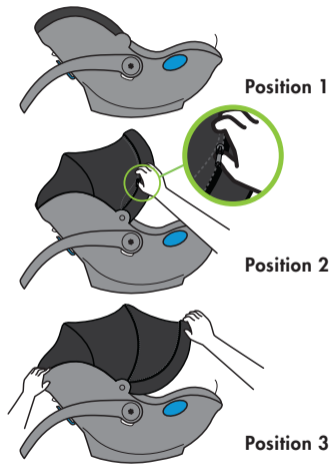


Figure 27

Removing/Installing UAS Bin

To use this car seat with the Liing Car Seat Base (sold separately), you **MUST** remove the UAS bin or the Carrier will not properly secure to the Base.

NOTE: When the UAS bin is removed, you can still safely install this Car Seat using the vehicle belt installation method.



WARNING

- NEVER install this carrier using the UAS belt without the UAS Bin attached as instructed in this manual.
- If installing this Car Seat with Liing Car Seat Base, you **MUST** remove the UAS Bin to prevent the Carrier from separating from the Base in a collision.
- ALWAYS follow all warnings and instructions in the Liing Owner's Manual if using Liingo with Liing Car Seat Base.

Removing UAS Bin

Step 1

Open UAS Bin Door by pressing and holding top of Lock Tab (1), then rotating UAS Bin Door down (2), as shown in **Figure 28**.

Step 2

Locate both UAS Bin Attachment Screws at top of UAS Bin as shown in **Figure 29**. Use the UAS Bin Removal Tool provided with this car seat or a T-20 Torx screwdriver to remove both Attachment Screws. Close UAS bin door.

Step 3

Grasp front edge of UAS Bin (1), and rotate it away from the Carrier (2), as shown in **Figure 30**.

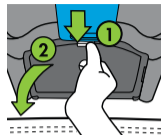


Figure 28

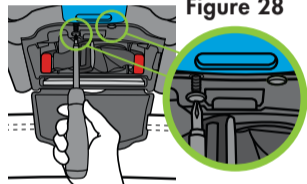


Figure 29

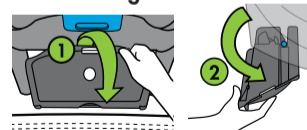


Figure 30

Step 4

Use your finger to press down on the release tab to disengage UAS bin from Base Attachment Bar (1), then slide UAS Bin out (2), as shown in **Figure 31**.

Store UAS Bin and both Attachment Screws in a cool, dry location out of direct sunlight for future use.

IMPORTANT: The screws used to attach the UAS Bin are small parts and are a CHOKING HAZARD. Keep them away from children.

Installing UAS Bin

Step 1

Position UAS Bin at back of Carrier such that the opening is positioned inline with the Base Attachment Bar. Continue to push UAS Bin in until Bottom Release Tab snaps over rear Base Attachment Bar as shown in **Figure 32**.

Rotate UAS Bin into position, as shown in **Figure 33**.

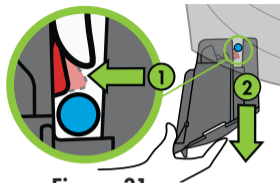


Figure 31

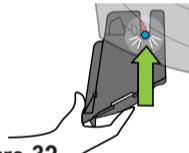


Figure 32



Figure 33

Step 2

Open UAS Bin Door by pressing and holding top of Lock Tab (1) then rotating UAS Bin Door down (2), as shown in **Figure 34**.

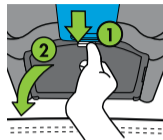


Figure 34

Step 3

Use the UAS Bin Removal Tool provided with this car seat or a T-20 Torx screwdriver to install both UAS Bin Attachment Screws as shown in **Figure 35**.

Close UAS bin door.

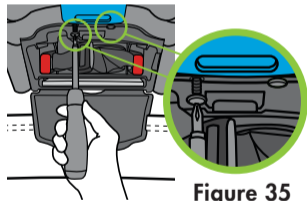


Figure 35

Vehicle Information



Vehicle Universal Anchorage System (UAS)

- UAS stands for Universal Anchorage System. This term refers to the anchors built into a vehicle for attaching child restraints and consists of two lower anchors at the crease between the vehicle seat back and vehicle seat cushion and a top tether anchor behind the vehicle seat as shown in **Figure 36**.
 - **UAS Lower Anchors:** If not readily visible, the UAS lower anchors may be noted by a symbol located near the crease between the vehicle seat back and vehicle seat cushion, as shown in **Figure 37**.

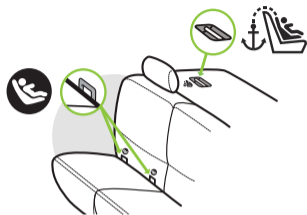


Figure 36



Figure 37

– **Top Tether Anchor:** If covered, the top tether anchor locations may be identified by a symbol as shown in **Figure 38**.



Figure 38

- 2003 or newer model year vehicles have at least two seating locations with a UAS Anchorage System. Some 2001 and 2002 model year vehicles have UAS Anchorage Systems. 2000 model year vehicles or older DO NOT have UAS Anchorage Systems. See your vehicle owner's manual if you are unsure if your vehicle is equipped with a UAS Anchorage System.
- See your vehicle owner's manual for seating positions which are equipped with the UAS anchorage system.
- For vehicles or vehicle seating positions that do not have a UAS Anchorage System, install the car seat with a vehicle belt.

Vehicle Seat Location Requirements

WARNING

- According to crash statistics, children 12 and under are safer when properly restrained in the back seat rather than in the front seat.



- Before using this car seat, reference your vehicle owner's manual for:
 - Car seat installation instructions
 - Information about air bags and car seat use



WARNING

- DO NOT use this car seat on front seat with an active frontal air bag. Child may be seriously injured or killed when an inflating air bag hits back of child restraint.
- NEVER use this car seat in a front vehicle seat location unless recommended by your vehicle owner's manual.
- Improper placement of this car seat in your vehicle increases the risk of serious injury or death. Some seating positions in your vehicle may not be safe for this car seat. Some vehicles DO NOT have any seating positions that can be used safely with this car seat. If you are not sure where to place this car seat in your vehicle, consult your vehicle owner's manual or call Clek customer service at 1-866-656-2462.



- Only install this car seat on vehicle seats that face forward. NEVER install this car seat on vehicle seats facing sideways or backwards, as shown in **Figure 39**.
- Only use this car seat on vehicle seats with seat backs that lock in an upright position. Check that the vehicle seat back is locked in an upright position recommended by the vehicle owner's manual for use when installing a child restraint.



Figure 39

Vehicle Belt Requirements

Design and operation of vehicle belt systems vary from vehicle to vehicle and seating position to seating position within a vehicle. Refer to the vehicle owner's manual for information regarding car seat installation and vehicle belt use with a car seat.



WARNING

- NEVER use this car seat with a vehicle belt that is cut, damaged, frayed or inoperable.
- Not all vehicle belts can be used with a car seat. This car seat **MUST** be held tight at all times by the lap belt or lap portion of the lap/shoulder belt.
- Using this car seat with a vehicle belt system unsafe for use with this car seat can result in serious injury or death. Pay careful attention to these systems; some of the vehicle belts that are not safe to use look very much like vehicle belts that are safe to use. If you are unsure, consult your vehicle owner's manual or call Clek Customer Service at 1-866-656-2462.



WARNING (continued)

- If installing the car seat using an inflatable vehicle belt, place lap belt through both blue UAS/Lap Belt Guides and place shoulder belt against vehicle seat back. **DO NOT** place the shoulder belt around the back of this car seat.

Vehicle Belt Systems

Retractable Lap/Shoulder Belts with a Sliding Latchplate: Shoulder belt is mounted on a retractor (the retractor is not visible), which automatically pulls the shoulder belt back in when released, and latchplate slides freely along the webbing of the vehicle belt, as shown in **Figure 40**.

There are 2 types of retractors: a Switchable Locking Retractor (SLR) or an Emergency Locking Retractor (ELR).

To check which type of retractor your lap/shoulder belt is equipped with:

1. Slowly pull the shoulder belt all the way out until it stops.
2. Allow the shoulder belt to pull back in about 15 cm (6 in.).
3. Pull out on shoulder belt again:
 - If the belt is locked and will not pull out again, it is equipped with a SLR.
 - If the shoulder belt pulls out again, it is equipped with an Emergency Locking Retractor (ELR).

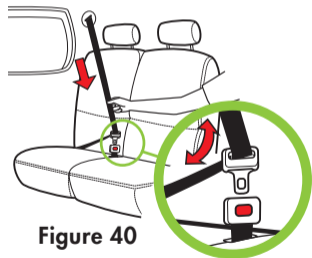


Figure 40

- If the lap/shoulder belt is equipped with a Switchable Locking Retractor (SLR), it can be used to secure this car seat.
- If the lap/shoulder belt is equipped with an Emergency Locking Retractor (ELR):
 - It can be used to install this car seat **ONLY** if the lap belt stays tightly adjusted around the Carrier when you check for secure installation. If it does not stay tightly secured around the Carrier, then a locking clip may be used to obtain a secure installation. Contact Clek Customer Service to purchase a locking clip.

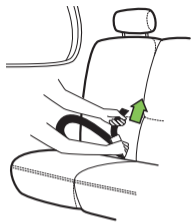


Figure 41

NOTE: Some lap/shoulder belts are equipped with a locking latchplate, which holds the lap portion of the belt at a fixed length when the belt is pulled tight. This type of lap/shoulder belt can be used to secure this car seat.

Manually Adjustable Lap Belts: Length can be manually adjusted, as shown in **Figure 41**, and the belt does not retract back into the vehicle.

- Most manually adjustable lap belts will provide a secure installation of this car seat. If the lap belt loosens, not providing a secure installation, it may be necessary to flip the locking latchplate over 180 degrees to maintain a secure installation as shown in **Figure 42**.



Figure 42

Inflatable Vehicle Belt: Lap/Shoulder belt with a built-in airbag.

- This car seat may not be compatible with every inflatable lap/shoulder belt. Contact Clek Customer Service at 1-866-656-2462 for more information.
- If installing the car seat using an inflatable vehicle belt, place lap belt through both blue UAS/Lap Belt Guides and place shoulder belt against vehicle seat back. **DO NOT** place the shoulder belt around the back of this car seat. Check your vehicle owner's manual for information on how to secure a car seat with the lap portion of the inflatable belt.

Retractable Lap Belts: Lap belt is mounted on a retractor which automatically pulls the lap belt back in when released, as shown in **Figure 43**.

There are 3 types of retractors: an Automatic Locking Retractor (ALR), Switchable Locking Retractor (SLR) or an Emergency Locking Retractor (ELR).

To check which type of retractor your retractable lap belt is equipped with:

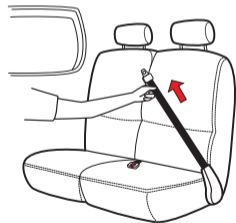


Figure 43

1. Pull the belt all the way out until it stops.
2. Allow the belt to pull back in about 15 cm (6 in.).
3. Pull out on belt again:
 - If the belt will not pull out again, it is equipped with an ALR or SLR retractor.
 - If the belt pulls out again, it is equipped with an ELR Retractor.

If this type of lap belt is equipped with an Automatic Locking Retractor (ALR), or a Switchable Locking Retractor (SLR), it can be used to secure this car seat.

NEVER install this car seat with a lap belt that is equipped with an Emergency Locking Retractor (ELR).

Motorized or Door-mounted Vehicle Belts:

NEVER use a vehicle belt where the shoulder belt is motorized or the lap or shoulder belt is mounted on the vehicle door, as shown in **Figure 44**.

See your vehicle owner's manual for more information on installing a car seat using the vehicle belt.

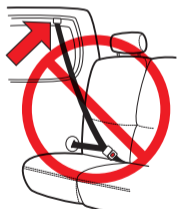


Figure 44

Installing/Removing Car Seat



WARNING

- NEVER use this car seat in the front seat of a vehicle with an active frontal air bag.
- NEVER use this car seat in a front vehicle seat location unless recommended by your vehicle owner's manual.
- To avoid injury this car seat **MUST** be installed by an adult.
- Failure to properly install or use this car seat increases the risk of serious injury or death to the child and others in a sharp turn, sudden stop or crash.



WARNING (continued)

- NEVER leave this car seat unsecured in your vehicle. This car seat **MUST** remain secured even when not occupied. In a sharp turn, crash, or sudden stop, an unsecured car seat can be thrown around and could severely injure vehicle occupants.
- Use only in a Rear-Facing position when using this car seat in a vehicle. Serious or crippling injury or death can result if infant faces front of vehicle.
- UAS Belt or vehicle belt **MUST** stay tightly adjusted around Carrier at all times when installed in a vehicle.
- When installing the Carrier in a vehicle, the Carrier **MUST** be installed with the UAS Belt or a vehicle lap or lap/shoulder belt. NEVER install Carrier using both UAS Belt and the vehicle belt at the same time.

Installing Car Seat with UAS



WARNING

- Only use the car seat UAS system in vehicle seating locations designated by the vehicle manufacturer for use with UAS and that have a standard anchor spacing of 280 mm (11 in.).
- UAS Connectors must be secured to the vehicle UAS lower anchors only. Connection to other vehicle anchors or vehicle components could result in the anchor tearing free in a crash.
- NEVER attach more than one UAS connector to a vehicle lower anchor unless recommended by the vehicle owner's manual for that vehicle.

Step 1

Secure child in Carrier. See “Securing Your Child in Car Seat” on **page 33**.

Step 2

Select a forward-facing vehicle seating location which has UAS.

Locate the UAS lower anchors as shown in **Figure 45**. See “Vehicle Universal Anchorage System (UAS)” on **page 49** in this manual and check your vehicle owner’s manual for further information.

Step 3

If the vehicle seat back is adjustable, make sure the seat back is locked in a more upright position. Refer to vehicle owner’s manual for recommended seat back angle. **DO NOT** install or use this car seat while the vehicle seat back is excessively reclined, as shown in **Figure 46**.

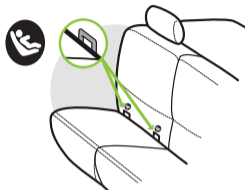


Figure 45



Figure 46

Step 4

Adjust or confirm that the Carry Handle is locked in upright position.

To adjust Carry Handle: press both Carry Handle Adjustment Buttons and rotate Handle until it locks in the upright position as shown in **Figure 47**.

Step 5

Position Carrier on vehicle seat with child facing the rear of the vehicle, and rotate Carrier so that the blue Recline Reference Line on side of Carrier is parallel with the ground, as shown in **Figure 48**.

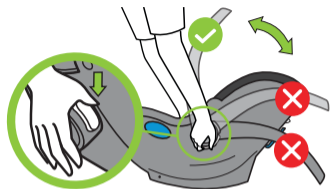


Figure 47

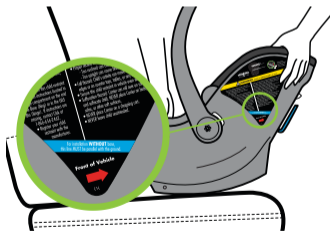


Figure 48



WARNING

- When installing, ALWAYS position Carrier so that blue Recline Reference Line on side of Carrier is parallel with the ground.
 - A seat too upright could result in an infant's head falling forward, which could restrict the ability to breath.
 - A seat too reclined can increase the risk of injury in a crash.

Step 6

Open UAS Bin Door by pressing and holding top of Lock Tab then rotating UAS Bin Door down, as shown in **Figure 49** then remove UAS Belt from UAS Bin.

- Press and hold red release button on each UAS Connector and pull out as shown in **Figure 50**.
- Remove UAS Adjuster and Belt from UAS Bin as shown in **Figure 51**.
- Rotate UAS Bin Door up and push to close.

Step 7

Lengthen UAS Belt by pressing and holding the Adjuster Release Button while pulling belt to extend the length of UAS Belt as shown in **Figure 52**.

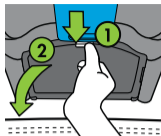


Figure 49



Figure 50



Figure 51

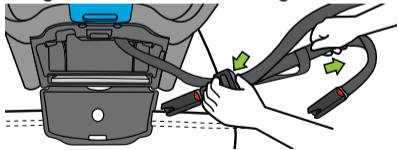


Figure 52

Step 8

Grasp the UAS Connector that is furthest from the UAS Belt Adjuster and align with the UAS lower anchor located on the child's right so that red release button is facing away from Carrier.

Press the UAS Connector against the UAS lower anchor until you hear the UAS Connector click, as shown in **Figure 53**.

Step 9

Route UAS Belt through both UAS/Lap Belt Guides as shown in **Figure 54**, taking care to keep UAS Belt flat with no twists.

NOTE: The narrower piece of webbing that runs between the UAS Belt and the UAS Bin can be slid along the UAS Belt so that it remains along the outer edge of the Carrier on the child's right.

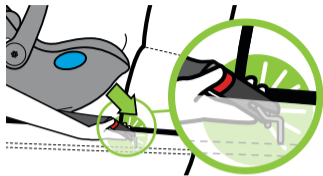


Figure 53

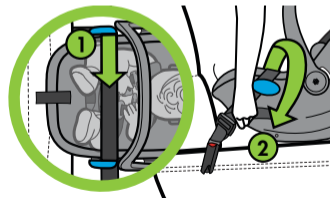


Figure 54

Step 10

Align UAS Connector closest to UAS Belt Adjuster with the UAS lower anchor located on the child's left so that red release button is facing away from Carrier.

Press the UAS Connector against the UAS lower anchor until you hear the UAS Connector click, as shown in **Figure 55**.

IMPORTANT: Check that the UAS Belt is flat with no twists and properly positioned in both UAS/Lap Belt Guides with each UAS Connector's red release button facing out before proceeding to **Step 11**.

Step 11

Tighten UAS Belt to secure the Carrier:

- Use your body to press the Carrier into the vehicle seat back while pulling free end of UAS Belt to tighten, as shown in **Figure 56**.

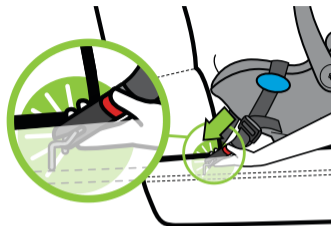


Figure 55

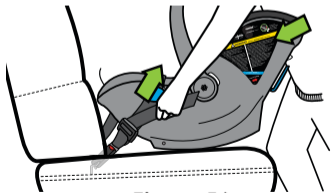


Figure 56

Step 12

Check for secure installation:

- Grip Carrier near blue UAS/Lap Belt Guides and pull Carrier side-to-side and front-to-back to check for secure installation, as shown in **Figure 57**. The Carrier should not move more than 2.5 cm (1 in.) at the belt path. Do not push down on Carrier near the child's feet when checking for movement.
- Verify that blue Recline Reference Line is parallel with ground, as shown in **Figure 57**. If not, loosen UAS Belt a small amount, adjust the recline of the Carrier, and go back to **Step 12**.

NOTE: If needed, a rolled towel or pool noodle may be placed under the foot end of the Carrier to achieve an acceptable recline level.

NOTE: If Carrier cannot be securely installed as instructed in this manual, try a different vehicle seating location or install Carrier using vehicle belt. See “Installing Car Seat with Vehicle Belt” on **page 73**.

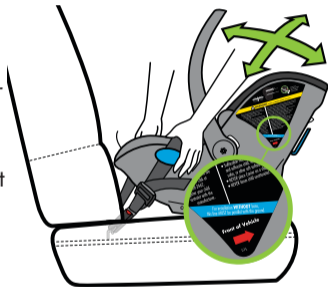


Figure 57

Check for these steps:

- ✓ Carrier does not move more than 2.5 cm (1 in.) at the belt path.
- ✓ Blue Recline Reference Line on side of seat is parallel with ground.

Removing Car Seat Installed with UAS

Step 1

Loosen UAS Belt by pressing and holding UAS Belt Adjuster and pulling out on UAS Belt as shown in **Figure 58**.

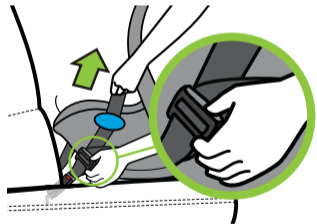


Figure 58

Step 2

Remove UAS Connectors from vehicle UAS lower anchors:

- Press and hold red release button while pulling UAS Connector as shown in **Figure 59**.
- Repeat to remove UAS Connector on opposite side.

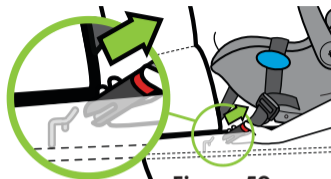


Figure 59

Step 3

Remove UAS Belt from UAS/Lap Belt Guides and store in UAS Bin.

- Open UAS Bin Door by pressing and holding top of Lock Tab then rotating UAS Bin Door down, as shown in **Figure 60**.

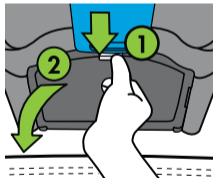


Figure 60

- Insert the UAS Connector closest to the UAS Belt Adjuster into left side of the UAS Bin and press until the UAS Connector locks into place as shown in **Figure 61**.
- Insert the other UAS Connector on the right side of the UAS Bin and press until the UAS Connector locks into place as shown in **Figure 62**.
- Store UAS Belt webbing in center portion of UAS Bin as shown in **Figure 63**.
- Rotate UAS Bin Door up and push to close.

IMPORTANT: ALWAYS store UAS Belt in UAS Bin when using Carrier outside of vehicle or installing Carrier using the vehicle belt.

Step 4

Remove Carrier from vehicle.

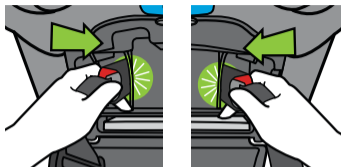


Figure 61

Figure 62

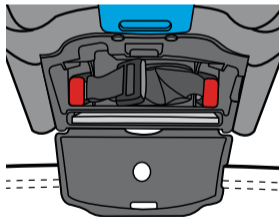


Figure 63

Installing Car Seat with Vehicle Belt



WARNING

- If installing the car seat using an inflatable vehicle belt, place lap belt through both blue UAS/Lap Belt Guides and place shoulder belt against vehicle seat back. **DO NOT** place the shoulder belt around the back of Carrier.
- Not all vehicle belts are safe for use with this car seat. Read the vehicle belt requirements section in this manual and your vehicle owner's manual.
- Refer to vehicle owner's manual to determine how to secure a child restraint system (car seat) in your vehicle using the vehicle belt.

Step 1

Secure child in Carrier. See “Securing Your Child in Car Seat” on **page 33**.

Step 2

Select a forward-facing vehicle seating location which has a vehicle belt which can be used with this car seat.

Step 3

If the vehicle seat back is adjustable, make sure the seat back is locked in a more upright position. Refer to vehicle owner’s manual for recommended seat back angle. **DO NOT** install or use this car seat while the vehicle seat back is excessively reclined, as shown in **Figure 64**.



Figure 64

Step 4

Adjust or confirm that the Carry Handle is locked in upright position. To adjust Carry Handle: press both Carry Handle Adjustment Buttons and rotate Handle until it locks in the upright position as shown in **Figure 65**.

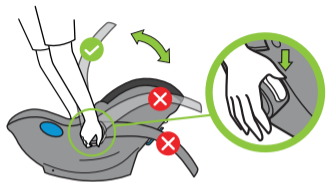


Figure 65

Step 5

Position Carrier on vehicle seat with child facing the rear of the vehicle, and rotate Carrier so that the blue Recline Reference Line on side of Carrier is parallel with the ground, as shown in **Figure 66**.

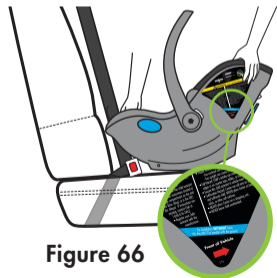


Figure 66

Step 6

If installing with lap/shoulder belt:

- Route lap portion of the vehicle belt through both blue UAS/Lap Belt Guides (1) and buckle vehicle belt (2), as shown in **Figure 67**. DO NOT pull the vehicle belt all the way out during this step.

If installing with lap-only belt:

- Route the lap belt through both blue UAS/Lap Belt Guides (1) and buckle vehicle belt (2), as shown in **Figure 68**.

Step 7

If installing with a lap/shoulder belt follow the instructions for a lap/shoulder belt or inflatable shoulder belt in this section. If installing with a lap-only belt, skip to **Step 8**.

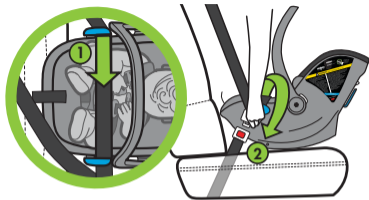


Figure 67

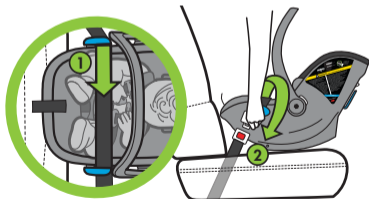


Figure 68

If installing with lap/shoulder belt:

- Slowly pull the vehicle shoulder belt all the way out to its full length, and hold.
- With one hand firmly holding the shoulder belt so it doesn't retract, wrap the shoulder belt around the back of the Carrier with the other hand, and tuck the shoulder belt into the blue Shoulder Belt Guide, as shown in **Figure 69**.

NOTE: If the vehicle shoulder belt is too short to wrap around the back of the Carrier, unbuckle the vehicle belt, remove the lap portion of the belt from the blue UAS/Lap Belt Guides and allow the vehicle belt to fully retract. Then repeat **Step 6**, and do the following as an alternative to **Step 7**:

- Slowly pull the vehicle shoulder belt all the way out to its full length, and hold. Take care to keep it fully extended.

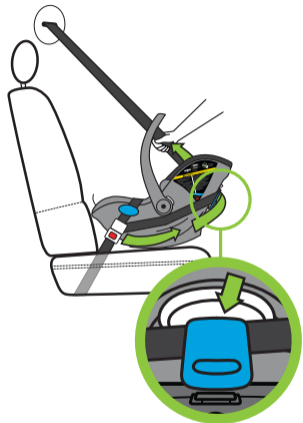


Figure 69

- Use other hand to shift Carrier more upright so that vehicle shoulder belt is able to wrap around the back of Carrier and tuck the shoulder belt into the blue Shoulder Belt Guide.
- Gently shift Carrier so that blue Recline Reference Line is parallel to the ground.

If you are still unable to shift Carrier so that blue Reference Line is parallel to the ground, remove the vehicle shoulder belt from around the back of the Carrier and let it retract into a position against the front of the vehicle seat back as shown in **Figure 70** and shift the Carrier so that the blue Reference Line is parallel to the ground, or move to another seating position.

If installing with an inflatable vehicle belt:

- DO NOT wrap shoulder belt around back of Carrier. Let the shoulder belt retract into a position against the front of the vehicle seat back as shown in **Figure 70**.

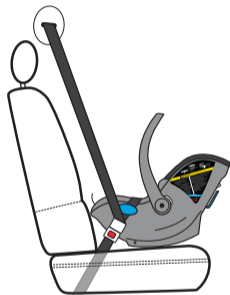


Figure 70

Step 8

Tighten Vehicle Belt to secure the Carrier.

If installing with lap/shoulder belt:

- Use your body to push and wiggle the Carrier into the vehicle seat back while pulling shoulder belt to remove all slack, as shown in **Figure 71**.

If installing with lap-only belt:

- Use your body to push and wiggle the Carrier into the vehicle seat back and pull free end of lap-only belt to remove all slack as shown in **Figure 72**.

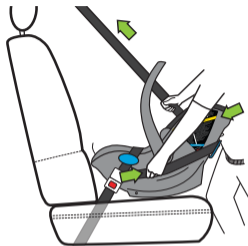


Figure 71

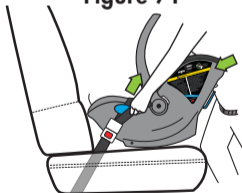


Figure 72

If installing with an inflatable belt:

- Switch the lap portion of the lap/shoulder belt to the automatic locking mode by pulling the lap portion of the lap/shoulder belt all the way out as shown in your vehicle manual.
- Use your body to push and wiggle the Carrier into the vehicle seat back and pull down on the lap portion of inflatable vehicle belt to tighten as shown in **Figure 73**.

NOTE: The lap portion of the inflatable vehicle belt **MUST** remain tight and not lengthen when pressure is released from the seat. If the lap portion of the inflatable vehicle belt does not remain tight, repeat this step and refer to your vehicle manual.

Step 9

Check for secure installation:

- Grip Carrier near blue UAS/Lap Belt Guides and pull Carrier side-to-side and front-to-back to check for secure installation, as shown in **Figure 74**.

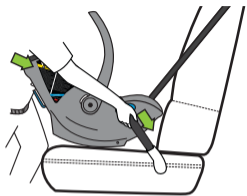


Figure 73

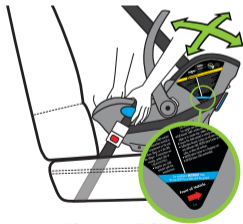


Figure 74

The Carrier should not move more than 2.5 cm (1 in.) at the belt path. Do not push down on Carrier near the child's feet when checking for movement.

- Verify that the blue Recline Reference Line on side of seat is parallel with ground, as shown in **Figure 74**. If not, unbuckle the seat belt and go back to **Step 6**.

NOTE: If needed, a rolled towel or pool noodle may be placed under the foot end of the Carrier to achieve an acceptable recline level.

NOTE: If vehicle belt does not stay tight or Carrier cannot be securely installed, try a different vehicle seating location or install car seat using UAS Belt. See "Installing Car Seat with UAS" on **page 62**.

Check for these steps:

- ✓ Carrier does not move more than 2.5 cm (1 in.) at the belt path.
- ✓ Blue Recline Reference Line on side of seat is parallel with ground.

Removing Car Seat Installed with Vehicle Belt

Step 1

If installed with lap-only belt:

- Unbuckle vehicle belt.

If installed with lap/shoulder belt:

- With one hand: Hold the shoulder belt so it doesn't get shorter.
- With the other hand: Unbuckle vehicle belt, remove the shoulder belt from the blue Shoulder Belt Guide, and move the shoulder belt over and off of Carrier.

Step 2

Remove the lap belt from the blue UAS/Lap Belt Guides.

Step 3

Remove Carrier from vehicle.

Using Carrier Outside of the Vehicle

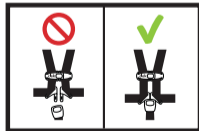
Thousands of children are injured or die every year in their car seat when used outside of the vehicle as a result of suffocation, falling and/or strangulation.

Carefully review these warnings. Failure to follow these warnings can result in serious injury or death of the child.



WARNING

- Strangulation Hazard: Children have **STRANGLED** in loose or partially buckled Harness Straps. Fully restrain your child even when Carrier is used outside the vehicle.





WARNING (continued)

- Strangulation Hazard: NEVER buckle just the Chest Clip. If the Chest Clip is closed and the Harness is not properly buckled, children can strangle on the Chest Clip.
- Fall Hazard: Child's activity can move Carrier. NEVER place Carrier on counter tops, tables, or any other elevated surface.
- Suffocation Hazard: Carrier can roll over on soft surfaces and suffocate child. NEVER place Carrier on beds, sofas, or other soft surfaces.
- NEVER leave child unattended. ALWAYS keep infant in view even when napping. DO NOT allow infant to sleep unattended in this car seat.



WARNING (continued)

- Fall Hazard: NEVER place this Carrier on a shopping cart. Carrier may be placed inside large basket of shopping cart (where it can't fall), or securely attached to a compatible stroller.

Using Carrier on Stroller

This Carrier may be used on most strollers that have Maxi-Cosi® car seat adapters. Only use Carrier with strollers or stroller car seat adapters that are approved for use with this car seat. For a complete list of approved strollers and stroller car seat adapters, please visit www.clekinc.ca/support/liingo

Carefully review and follow all information and instructions in your stroller manual that are specific to car seat or carrier use with the stroller.

Maxi-Cosi is a registered trademark of Dorel Juvenile Group, Inc.



WARNING

- ALWAYS lift up on Carry Handle after placing Carrier on stroller to make sure that it is securely attached to the stroller.
- DO NOT use Carrier on the stroller if the Carrier does not securely lock onto the adapter on both sides of the stroller. If the Carrier does not securely lock onto the adapters, the Carrier could fall off the stroller resulting in serious injury to the child.
- ALWAYS store UAS Belt in UAS Bin before placing Carrier on stroller.

Installing Carrier on Stroller

Step 1

Set the parking brake on the stroller.

Step 2

Securely attach the car seat adapters to the stroller by following the stroller manufacturer's instructions.

Check that car seat adapters are securely attached to the stroller.

Step 3

IMPORTANT: The Carrier must be installed with the child facing the stroller handle. NEVER install the Carrier with the child facing away from the stroller handle.

Securely attach the Carrier onto the car seat adapters:

- With the child properly secured in the Carrier, position the Carrier so that the Stroller Attachment Points on the Carrier are positioned directly above the stroller car seat adapters, and lower Carrier onto the adapters, as shown in **Figure 75**.

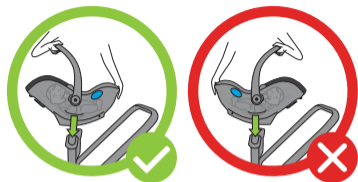


Figure 75

- Push down on each side of the Carrier to lock onto each adapter, as shown in **Figure 76**.

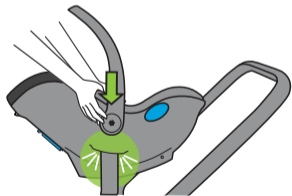


Figure 76

Step 4

Pull up on the Carrier to ensure that it is securely locked on both sides of the stroller, as shown in **Figure 77**.

NOTE: It can be helpful to put the Carrier on the adapters one side at a time, and after lowering the Carrier onto the 1st adapter, push the 2nd adapter towards the Carrier while lowering the Carrier onto the 2nd adapter.



Figure 77

Check for these steps:

- ✓ Lift up on Carrier to ensure that it is securely locked on the stroller on each side.
- ✓ Carrier is installed in the orientation that has the child facing the stroller handle.

Step 5

Make any necessary adjustments to the stroller handle position

IMPORTANT: Certain strollers have handle positions that cannot be used with this Carrier. Please visit www.clekinc.com/support/liingo for a list of any restrictions.

Releasing Carrier from Stroller

Confirm that the Carry Handle is locked in the upright position.

Squeeze the Stroller Release Handle on the back of the Carrier as shown in **Figure 78**, and lift the Carrier off of the stroller.

NOTE: If the Carrier feels stuck, it can be helpful to squeeze the Stroller Release Handle while pushing down on the Carrier on the side that feels stuck. Then, while still squeezing the Stroller Release Handle, lift the Carrier off the stroller.

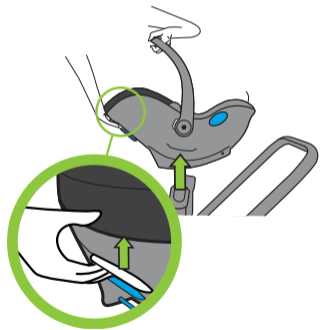


Figure 78

Aircraft Installation

Clek strongly recommends that children are secured in a car seat during airline travel.

To install this car seat on an aircraft, follow the instructions for installing with a lap-only belt in “Installing Car Seat with Vehicle Belt” on **page 73**.

Care and Cleaning

Carrier Cover and Newborn Support System may be spot cleaned or hand washed. If a thorough cleaning is necessary, see “Removing/Installing Carrier Cover” on **page 95**, and “Support Cushion Removal/Installation” and “Support Headrest Removal/Installation” on **pages 31 and 32**. Follow the hand washing instructions on **page 92**.

Car Seat Cleaning

FABRIC CARE INSTRUCTIONS

Spot Cleaning:

Step 1

If the spot has dried, try lightly brushing or scraping off the residue. Wipe surface with water.

Step 2

If a spot still remains, apply a solution of mild detergent and water to fabric with a light mist.

Step 3

Work area using soft brush or edge of spoon from outside of spot towards the middle.

Step 4

Allow solution to work for approximately one minute.

Step 5

Remove with clean water or blot with clean soft towel.

Step 6

Repeat steps 3-5 as necessary until spot is removed.

Step 7

Rinse with clear lukewarm water and blot with clean soft white cloth as final step.

Hand Washing:

Remove Cover as described on **page 95** and hand wash in solution of mild detergent and water, no bleach. Rinse in clear water and hang to dry. **DO NOT** place in dryer.

EXTERIOR PLASTICS ONLY WASHING INSTRUCTIONS

Use a soft cloth with warm water and mild soap. Apply light pressure with cloth in small circular motions. **DO NOT** remove the labels from this car seat. They are meant to be permanent so they can remind you and others of important information. Removal will marr the finish of the seat.

HARNESS CARE INSTRUCTIONS

Surface wash Shoulder Harness Straps and Harness Adjuster Strap with a damp cloth using warm water and a mild detergent.

Rinse with clear lukewarm water and blot with clean soft cloth as final step.

BUCKLE WASHING INSTRUCTIONS

Buckle may be rinsed under warm water. **DO NOT** use detergents or lubricants.

Removing/Installing Carrier Cover

TO REMOVE CARRIER COVER

Step 1

Ensure that Canopy is in the closed position.

Adjust Carry Handle to the ground position by pressing both Carry Handle Adjustment Buttons and rotating the Carry Handle until it locks into Position 3, as showing in **Figure 79**.

Step 2

Loosen Harness by pressing down on the Harness Adjuster Tab and pulling out on Shoulder Harness Straps, as shown in **Figure 80**.

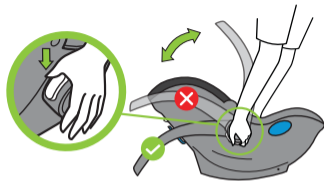


Figure 79

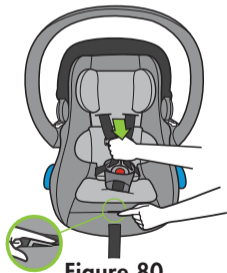


Figure 80

NOTE: Check which Shoulder Harness Slots the Shoulder Harness Straps are routed through, so they can be rethreaded through the same Slots when rethreading.

Step 3

Turn Carrier over and remove loop at end of each Shoulder Harness Strap from Metal Harness Plate by sliding Strap out through slot in Metal Harness Plate as shown in **Figure 81**.

From front of Carrier, pull Shoulder Harness Straps out of Carrier Seat Back.

(If present) Remove the Newborn Support System. See “Support Cushion Removal/Installation” and “Support Headrest Removal/Installation” on **pages 31 and 32**.

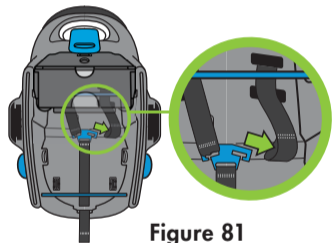


Figure 81

Step 4

Turn Carrier over and locate Inner Shell Release Tabs. Press each Inner Shell Release Tab away from the center of the Carrier, as shown in **Figure 82**, and press down.

NOTE: It may be easier to place Carrier on its side and release Shell Release Tab that is on top (with one hand), while pulling Inner Shell away from Outer Shell (with the other hand). Then, flip the Carrier over to the opposite side and repeat.

Step 5

Turn Carrier on side and pull Inner Carrier Shell away from Outer Carrier Shell.

Step 6

Pull Harness Adjuster Strap out of Inner Carrier Shell as shown in **Figure 83**. DO NOT remove Harness Adjuster Strap from Outer Carrier Shell.

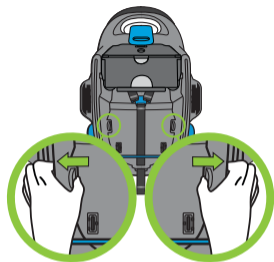


Figure 82

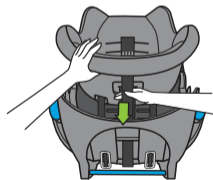


Figure 83

Step 7

Remove Crotch Strap and Buckle from Buckle Pad by pressing down on top of Buckle to push it down and out of Buckle Pad as shown in **Figure 84**.

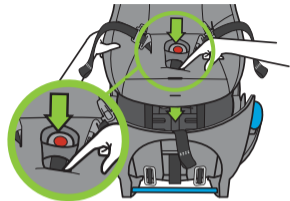


Figure 84

Lift Inner Carrier Shell with one hand and use other hand to pull Buckle and Crotch Strap out of Inner Carrier Shell as shown in **Figure 85**.

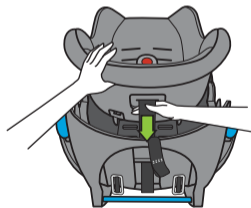


Figure 85

Step 8

Remove Shoulder Harness Straps from Inner Carrier Shell.

For each Shoulder Harness Strap:

- Push Buckle Tongue down through hip strap opening in Carrier Cover and Inner Carrier Shell, as shown in **Figure 86**.
- Position Chest Clip so that end of Chest Clip is aligned with the hip strap opening, and push Chest Clip down through hip strap opening in Carrier Cover and Inner Carrier Shell, as shown in **Figure 87**.
- Position hand between Inner and Outer Carrier Shell and pull remaining Shoulder Harness Strap length down through the hip strap opening.

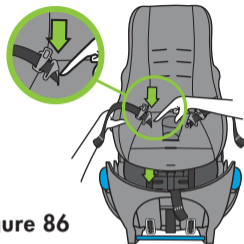


Figure 86

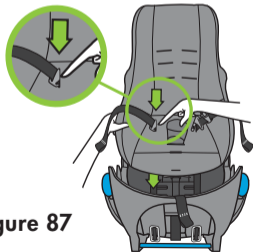


Figure 87

Step 9

Remove Carrier Cover:

- Release bottom edge of Carrier Cover from Inner Carrier Shell by sliding Cover up and over the bottom edge.
- Unfasten side tab on each side by sliding tabs down and out from under the edge of the Inner Shell, as shown in **Figure 88**.
- Pull up on top of Carrier Cover to complete removal of Carrier Cover.

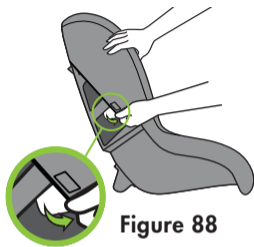


Figure 88

TO INSTALL CARRIER COVER

Step 1

Position Carrier Cover above Inner Carrier Shell and slide top of Carrier Cover over top edge of Inner Carrier Shell.

Smooth Carrier Cover down into the seat until the bottom contacts the bottom of the Inner Carrier Shell, then pull bottom elastic edge of the Carrier Cover down and over the bottom edge to secure it around bottom edge of Inner Carrier Shell.

Attach side tab on each side of Carrier Cover by tucking tab under edge of Inner Carrier Shell, as shown in **Figure 89**.

Check that Carrier Cover is in position with the Shoulder Harness Slot openings aligned between the Carrier Cover and the Inner Carrier Shell.

Step 2

Position Inner Carrier Shell above Outer Carrier Shell and route Shoulder Harness Straps up through hip strap opening in Inner Carrier Shell and Carrier Cover as shown in **Figure 90**.

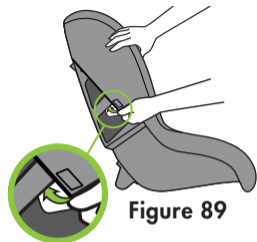


Figure 89

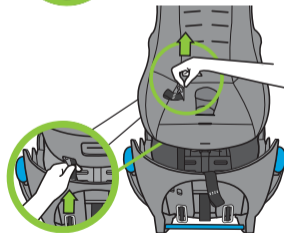


Figure 90

For each Shoulder Harness Strap:

- Push end of Shoulder Harness Strap up through hip strap opening in inner shell and cover. Make sure that the Shoulder Harness Straps remain untwisted when routing through the hip strap openings.
- Position end of Chest Clip at hip strap opening and push up through opening.
- Push Buckle Tongue up through hip strap openings.
- Repeat for other Shoulder Harness Strap.

Step 3

Push Crotch Strap up through the opening in the Inner Carrier Shell and Cover, as shown in **Figure 91**.

From top of Cover, pull Buckle all the way up, taking care that there are no twists in the Crotch Strap, then insert Buckle through Buckle Pad.

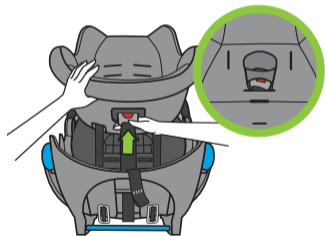


Figure 91

Step 4

Re-thread Harness Adjuster Strap up through slot in Inner Carrier Shell and Cover as shown in **Figure 92**.

Step 5

Check that entire length of Shoulder Harness Straps and Crotch Strap are pulled to top side of Inner Carrier Shell and Cover, and that straps are free of twists.

Step 6

Align Inner Carrier Shell over Outer Carrier Shell so that each side of Inner Carrier Shell overlaps the raised ridge on Outer Carrier Shell and lower Inner Shell down into Outer Shell, as shown in **Figure 93**.

From top of seat, press firmly down on Inner Carrier Shell until it locks onto Outer Carrier Shell.

Lift up on each side to check that the Inner Carrier Shell is locked into the Outer Carrier Shell.

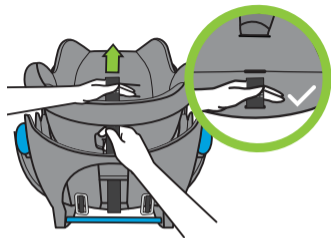


Figure 92

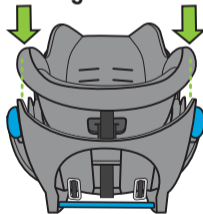


Figure 93

Turn Carrier over and confirm that both Inner Shell Release Tabs are through Outer Carrier Shell and locked in position, as shown in **Figure 94**.

NOTE: You may need to pull the Canopy fabric out of the way so that it falls over the Inner Shell and does not get trapped between the Inner and Outer Shells.

NOTE: If Inner Carrier Shell does not lock into Outer Carrier Shell, confirm that Shoulder Harness Straps and Crotch Strap are pulled to top side of Inner Carrier Shell. Contact Clek Customer Service at 1-866-656-2462 if unable to lock the Inner Carrier Shell in place.

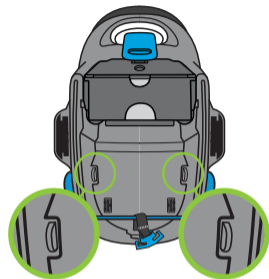


Figure 94

Check for this step:

- ✓ Straps are flat and not twisted.
- ✓ Inner Shell Release Tabs are through Outer Carrier Shell and locked in position.

Step 7

Buckle Harness.

Step 8

Rethread the Shoulder Harness Straps. See “Changing Shoulder Harness Height” on **page 22**.

RECYCLING YOUR CAR SEAT

For instructions on how to recycle your Clek Liingo infant seat, please visit: www.clekinc.ca/recycle

Troubleshooting

For instructions on troubleshooting your Clek Liingo infant seat, please visit: www.clekinc.ca/support/liingo

Accessories

Optional accessories for this product may be purchased at: www.clekinc.ca/accessories

Warranty

LIMITED WARRANTY

Clek Inc. warrants, only to the original consumer purchaser and only if this product was purchased (new and unused in an unopened box) from an authorized Clek retailer listed at www.clekinc.com, that this product will be free from defects in material and workmanship for one (1) year from the date of original purchase (the "Warranty Period"). During the Warranty Period, Clek Inc. will, at its option, repair or replace this product if it is found by the manufacturer to be defective in material or workmanship. Clek Inc. reserves the right to discontinue or change parts, fabrics, models, or products, or to substitute this product with a comparable model or product. To make a claim under this warranty, please contact us at <https://clekinc.com/support/contact-us/>, call us at 1-866-656-2462, or write to us at Clek Inc., Attn: Customer Service, Clek Inc., 226 Lesmill Road, Toronto, ON, Canada M3B 2T5. An original receipt is required to validate your warranty and shipping charges will be the responsibility of the original consumer purchaser. To expedite the processing of any future warranty claims and to verify the original date of purchase, please complete and mail the pre-addressed owner registration card within thirty (30) days of purchase.

WARRANTY LIMITATIONS

This warranty does not cover the effects of normal wear and tear or damage resulting from negligence, modification, improper installation, accidents, misuse or abuse of this product. It is expressly agreed that the obligations of Clek Inc. and the original consumer purchaser's remedies under the limited warranty contained herein are exclusive and are strictly limited to the repair or replacement of the product. This limited warranty is conditional upon strict compliance with the provisions of the Instruction Manual. In no event will Clek Inc. or the dealer selling this product be liable to you for any damages, including incidental or consequential damages, arising out of the use or inability to use this product.

LIMITATION OF WARRANTIES AND STATE/PROVINCIAL LAW RIGHTS

The warranty and remedies as set forth above are exclusive and in lieu of all others, oral or written, express or implied. To the extent permitted by applicable law, any implied warranties, including implied warranties of merchantability and fitness for a particular purpose, are hereby disclaimed. Some states/provinces DO NOT allow limitations as to how long an implied warranty lasts or the exclusion or limitation of incidental or consequential damages, so the above limitations may not apply to you. This warranty gives you specific legal rights, and you may have other rights, which vary from state/province to state/province. Neither Clek Inc. nor the dealer selling this product has authorized any person to create for it any other warranty, obligation, or liability in connection with this product.

Keep this Instruction Manual for future use.
Store in the Instruction Manual Storage Slot in UAS Bin.

clek
www.clekinc.com

Clek Inc.
226 Lesmill Road
Toronto, Ontario Canada
M3B 2T5
1-866-656-2462

